

A**B****C**

The Rozel cap

Log Roz - 02

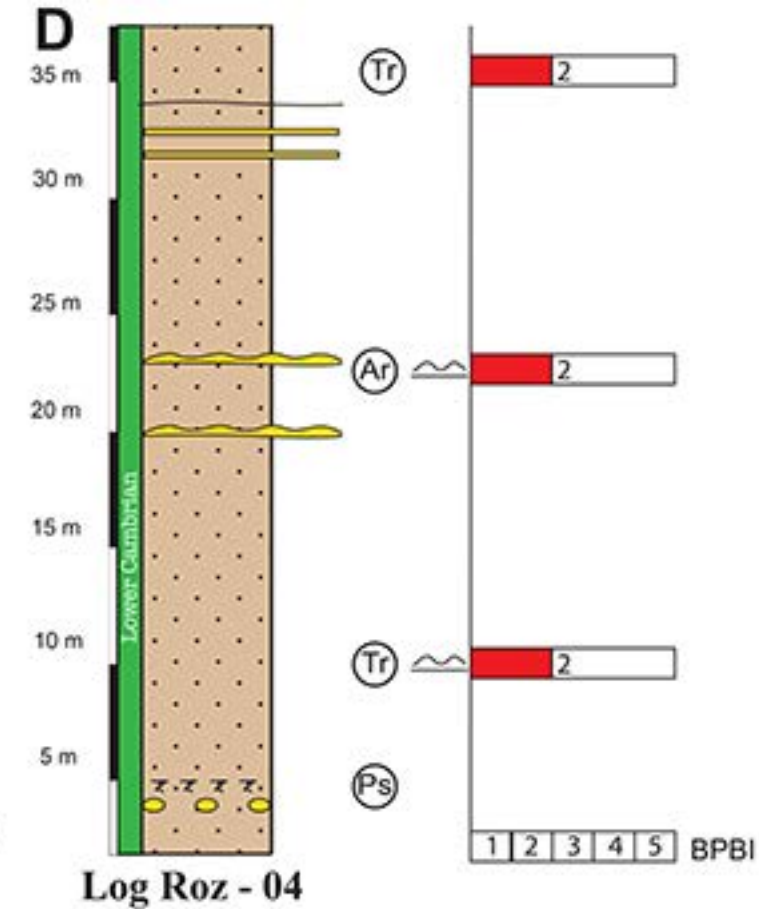
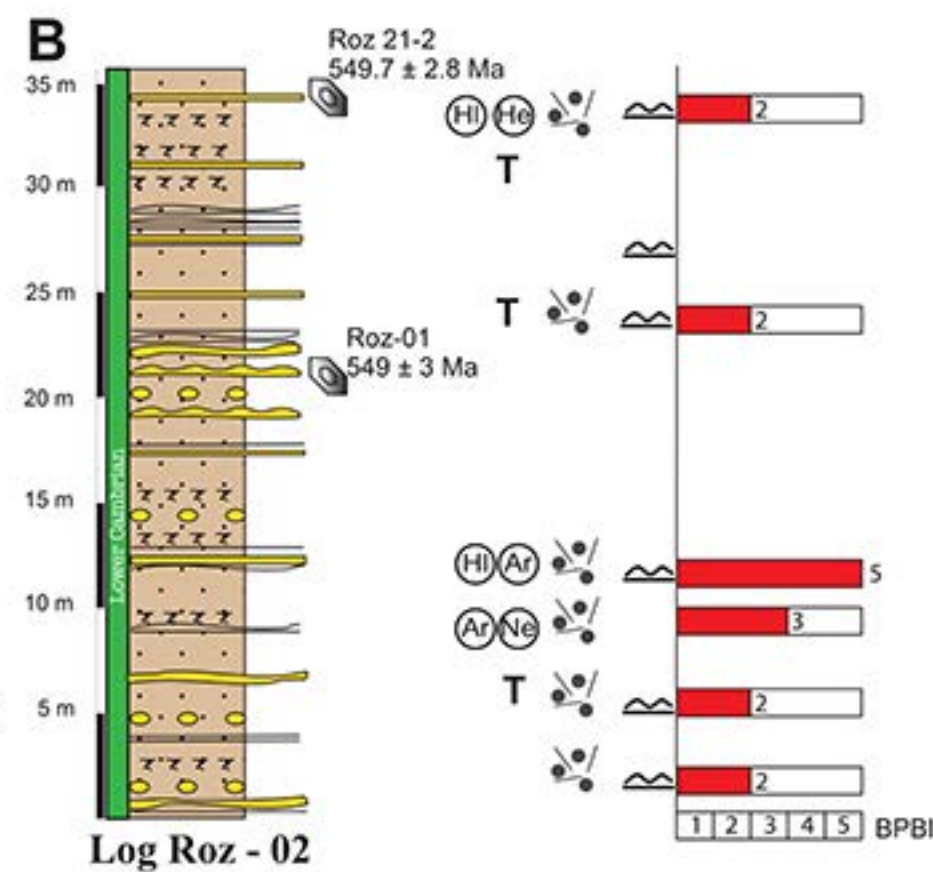
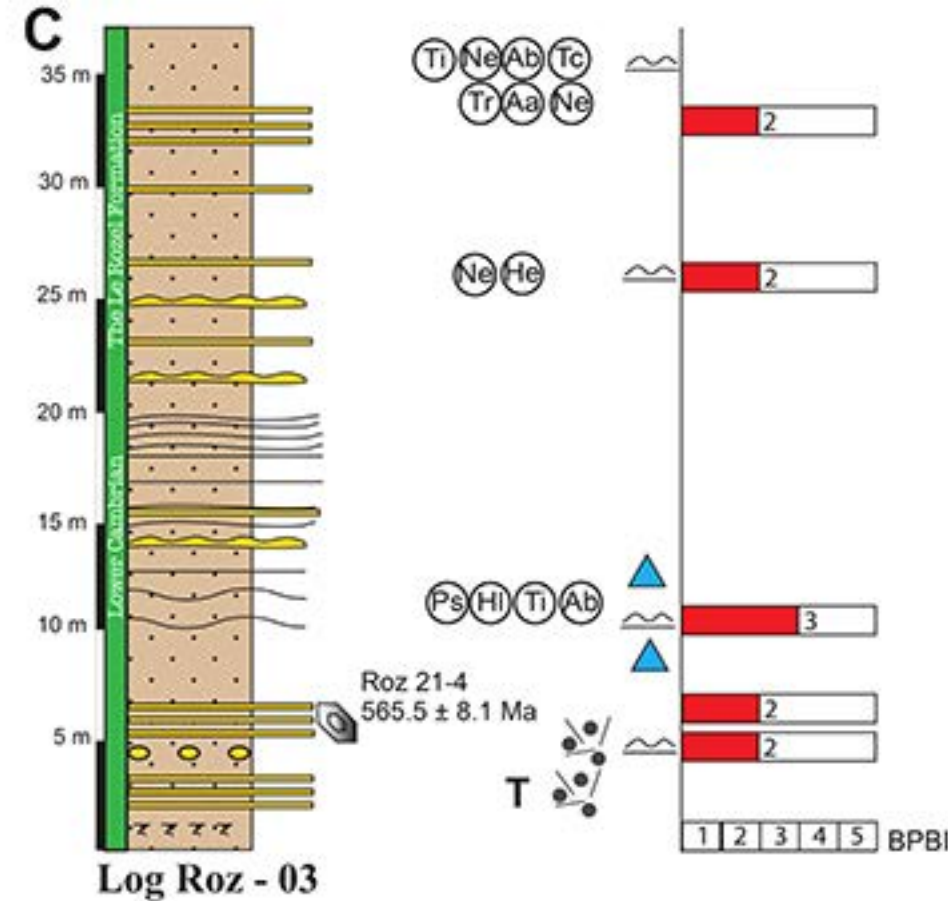
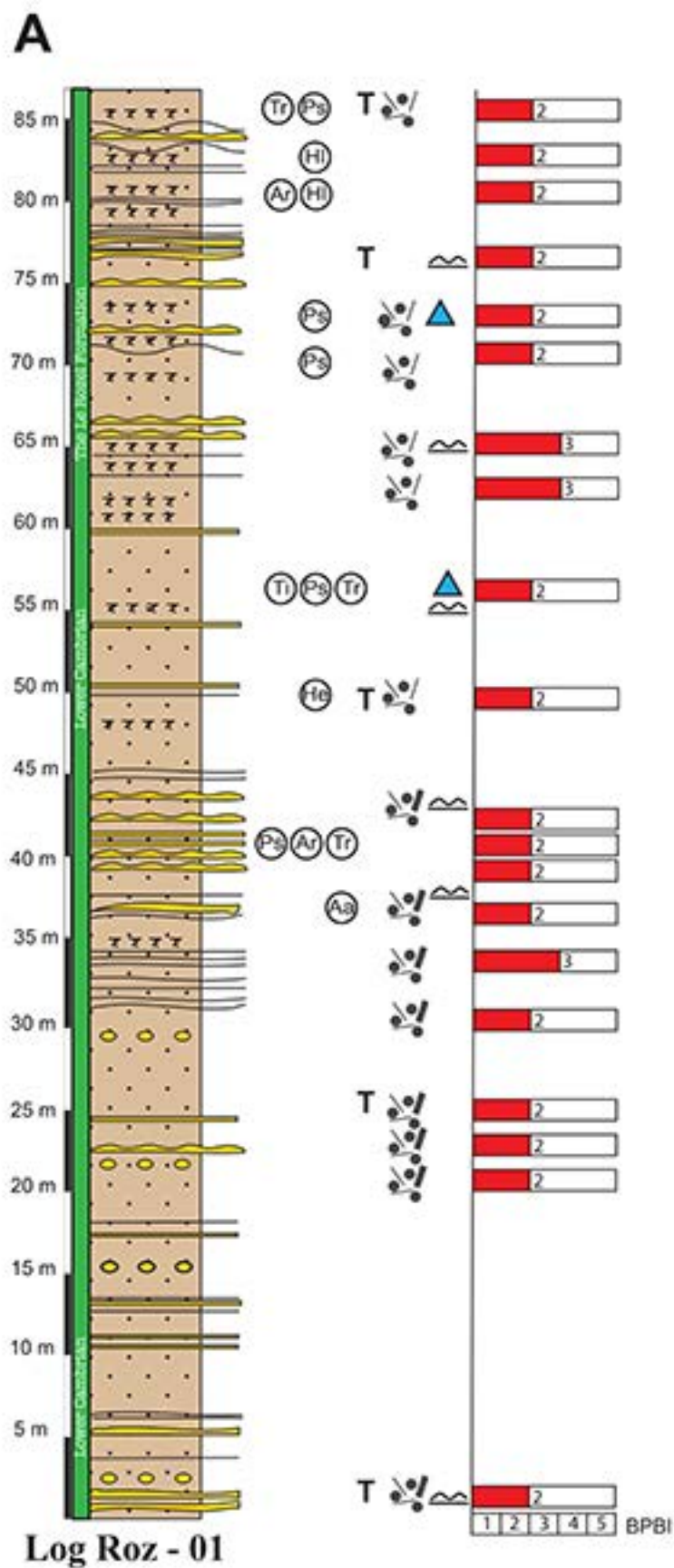
Log Roz - 01

Log Roz - 03

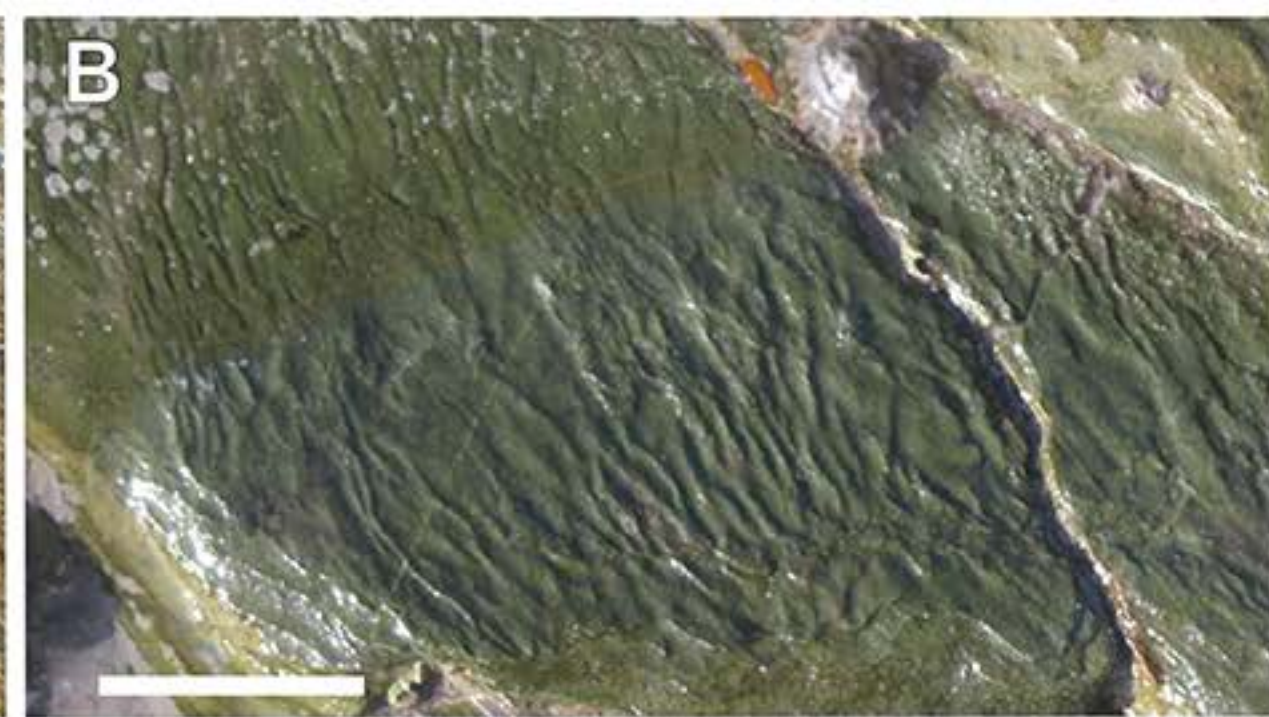
Log Roz - 04

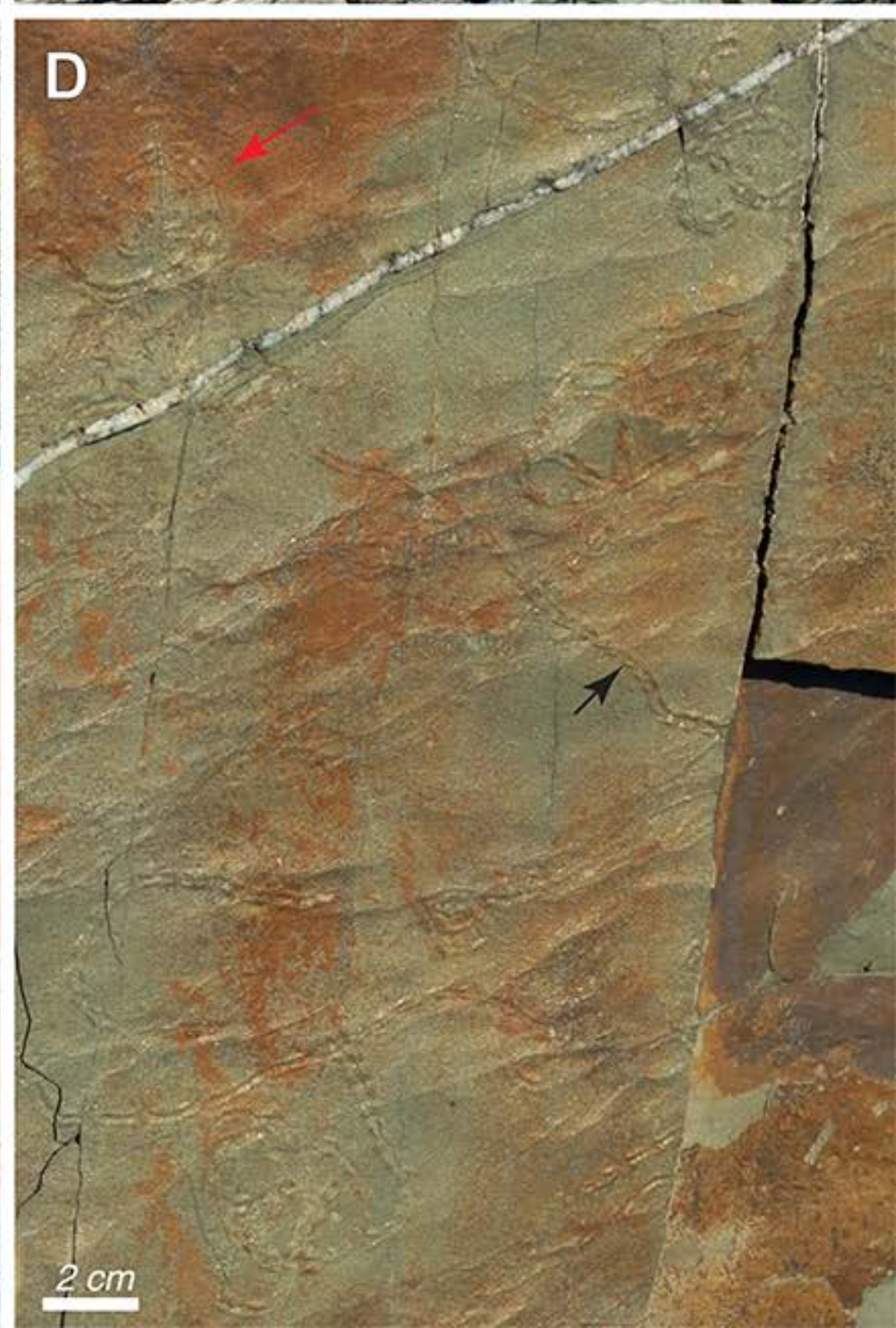
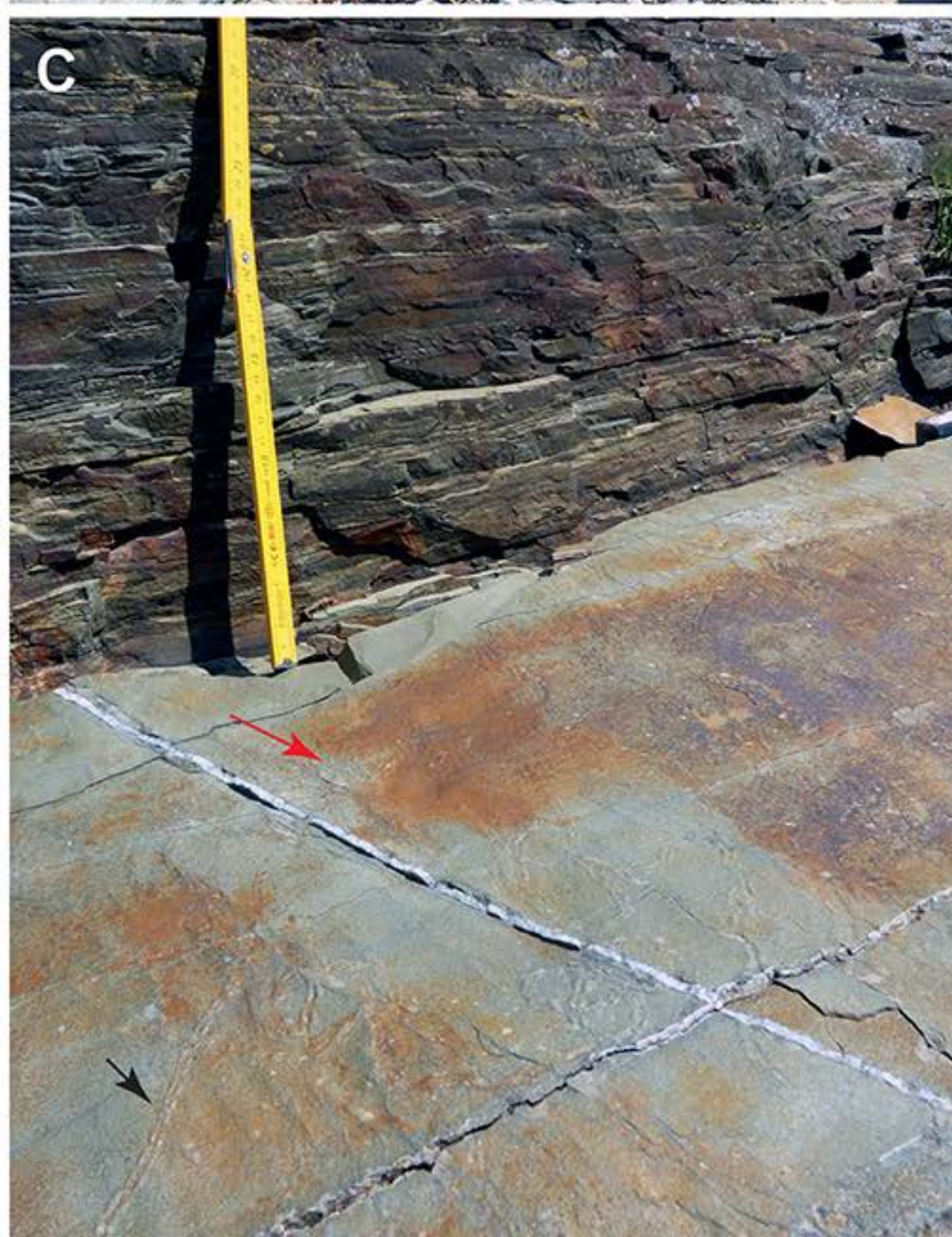
50 m



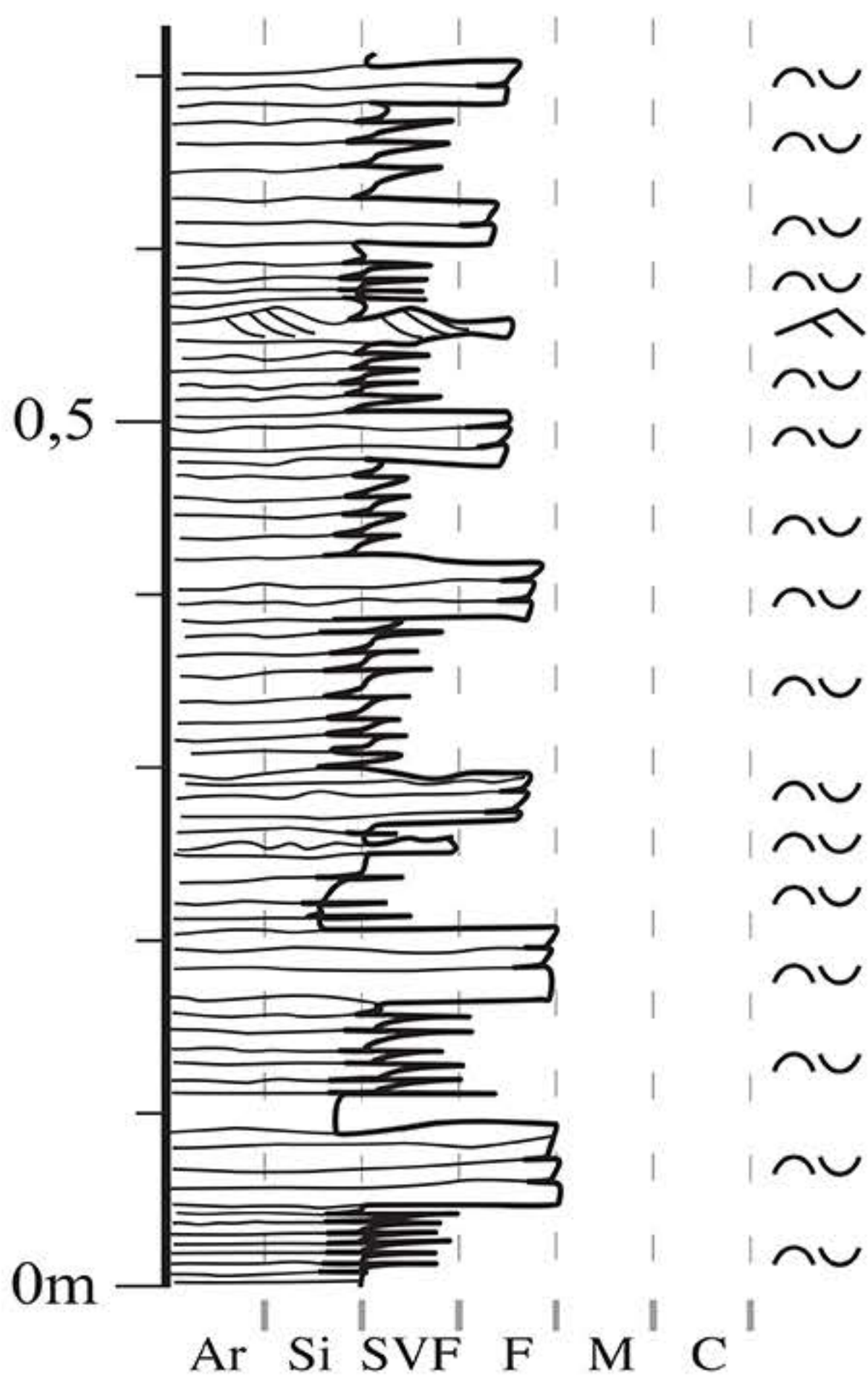


- Sandstones
- Intercalations of fine-grained sandstones and clayey silty beds
- Carbonate nodules
- Phosphatic nodules
- Syneresis cracks
- Zircon grain datings
- Microbial mats
- Undifferentiated bioturbation
- Treptichnides indet.
- Archaeonassa* isp.
- Archaeonassa cf. fossulata*
- Archaeonassa fossulata*
- Helminthoidichmites tenuis*
- Helminthopsis tenuis*
- Nereites* isp.
- Psammichnites gigas circularis*
- Treptichnus* isp.
- Treptichnus coronatum*
- Treptichnus pedum*

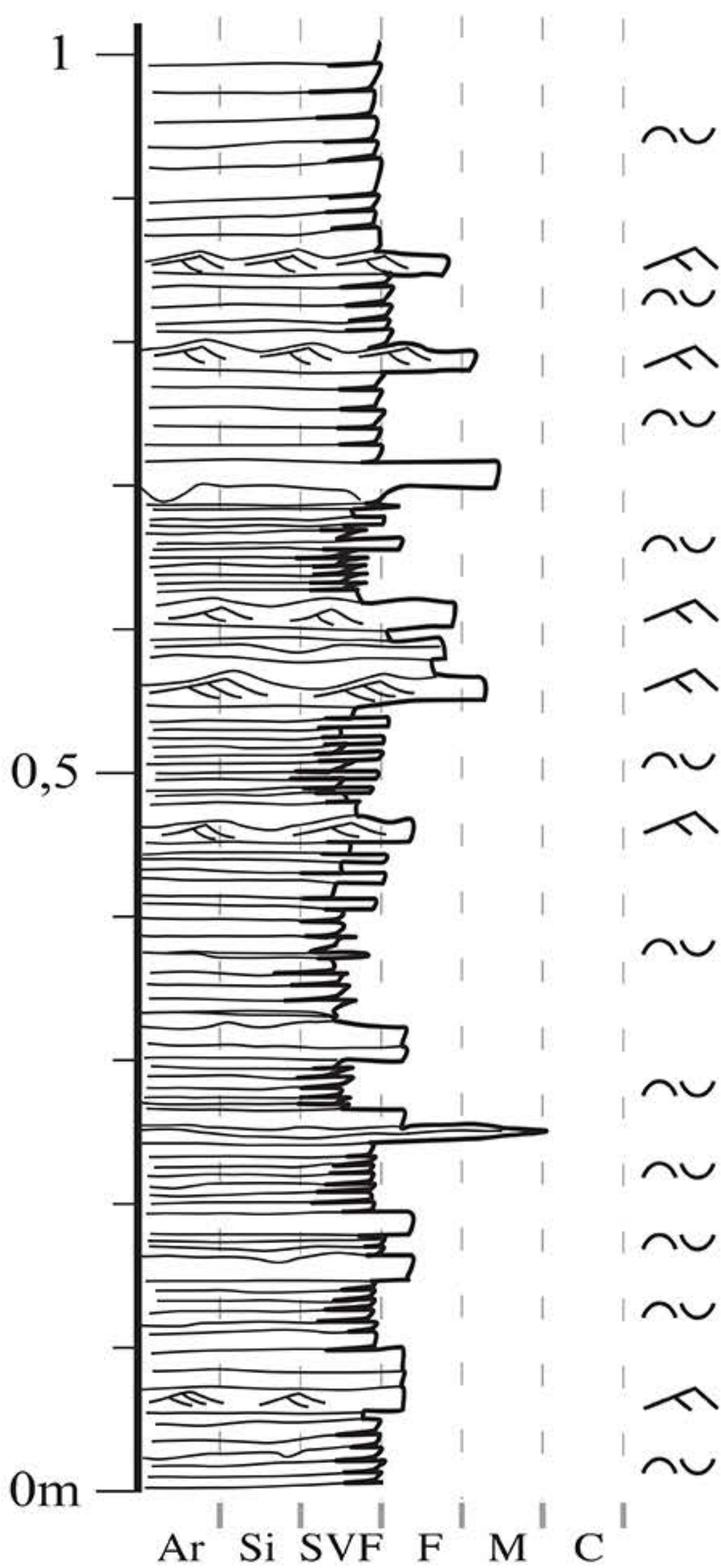




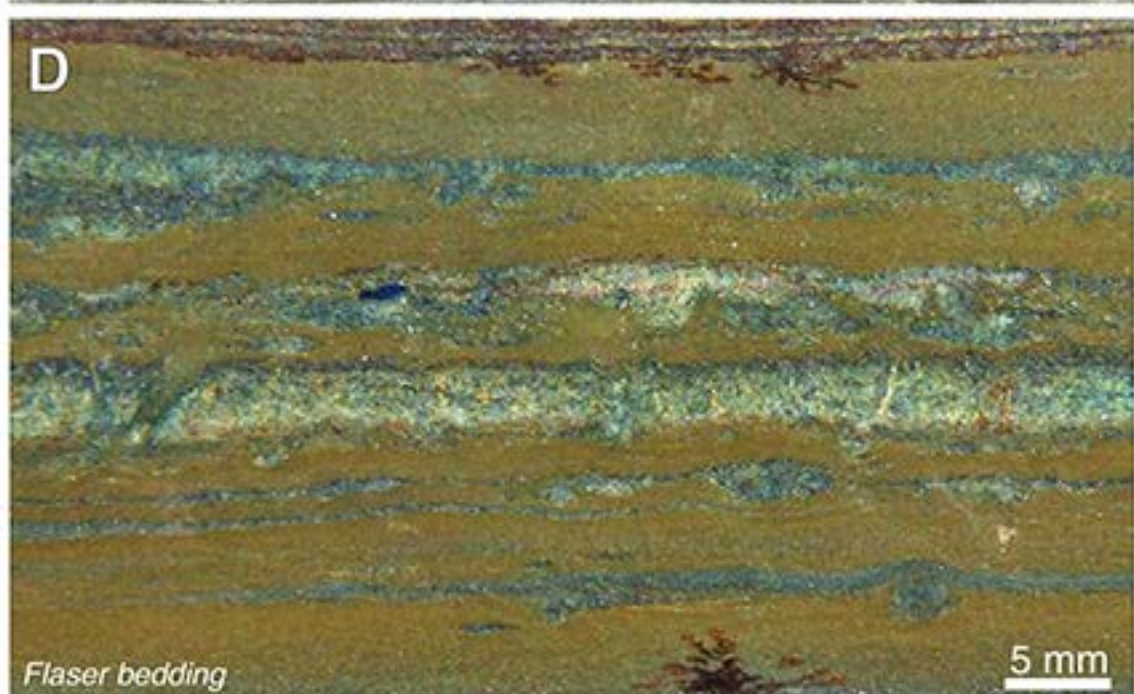
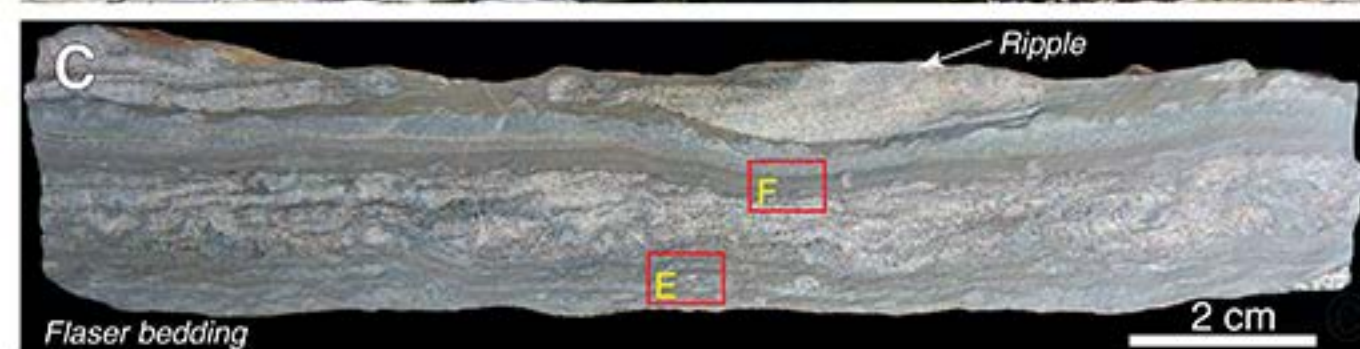
LOG 2

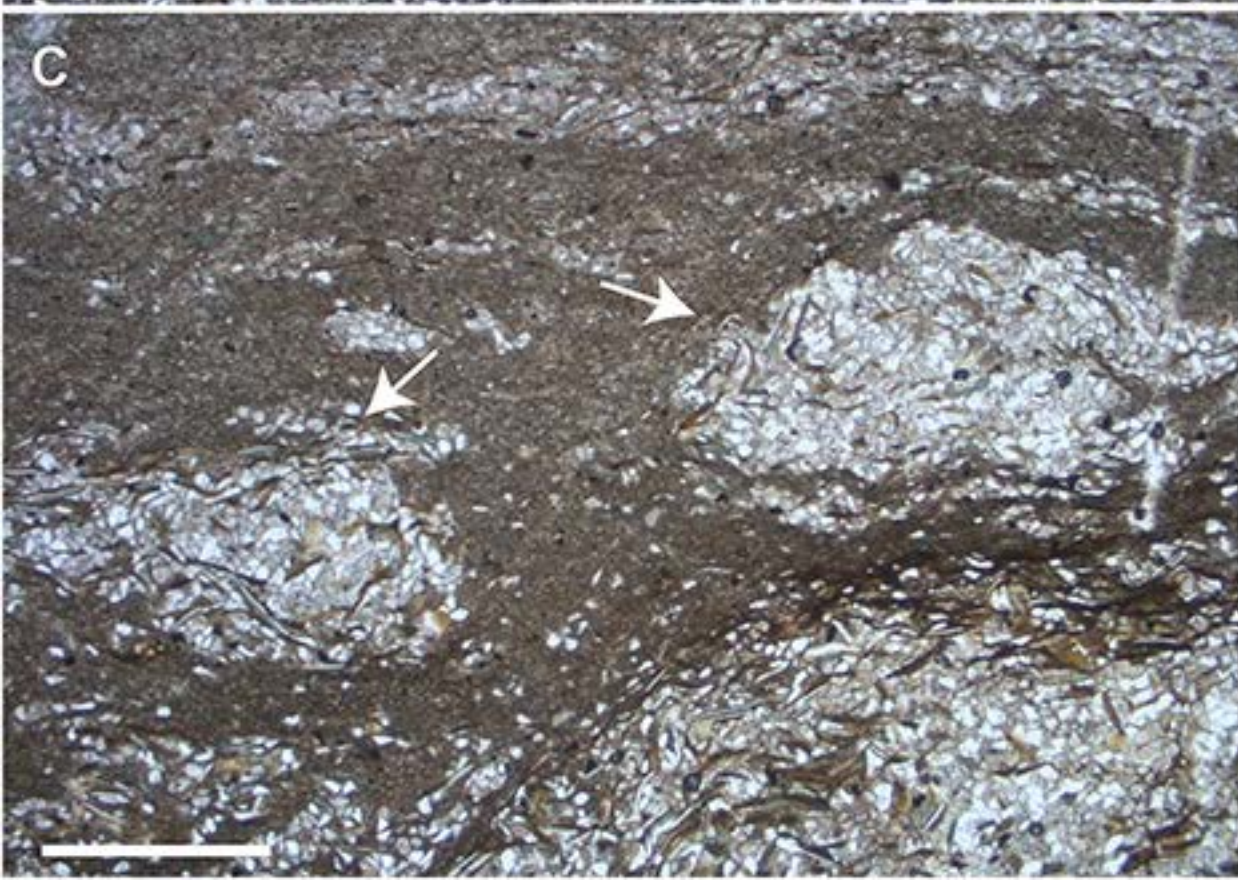
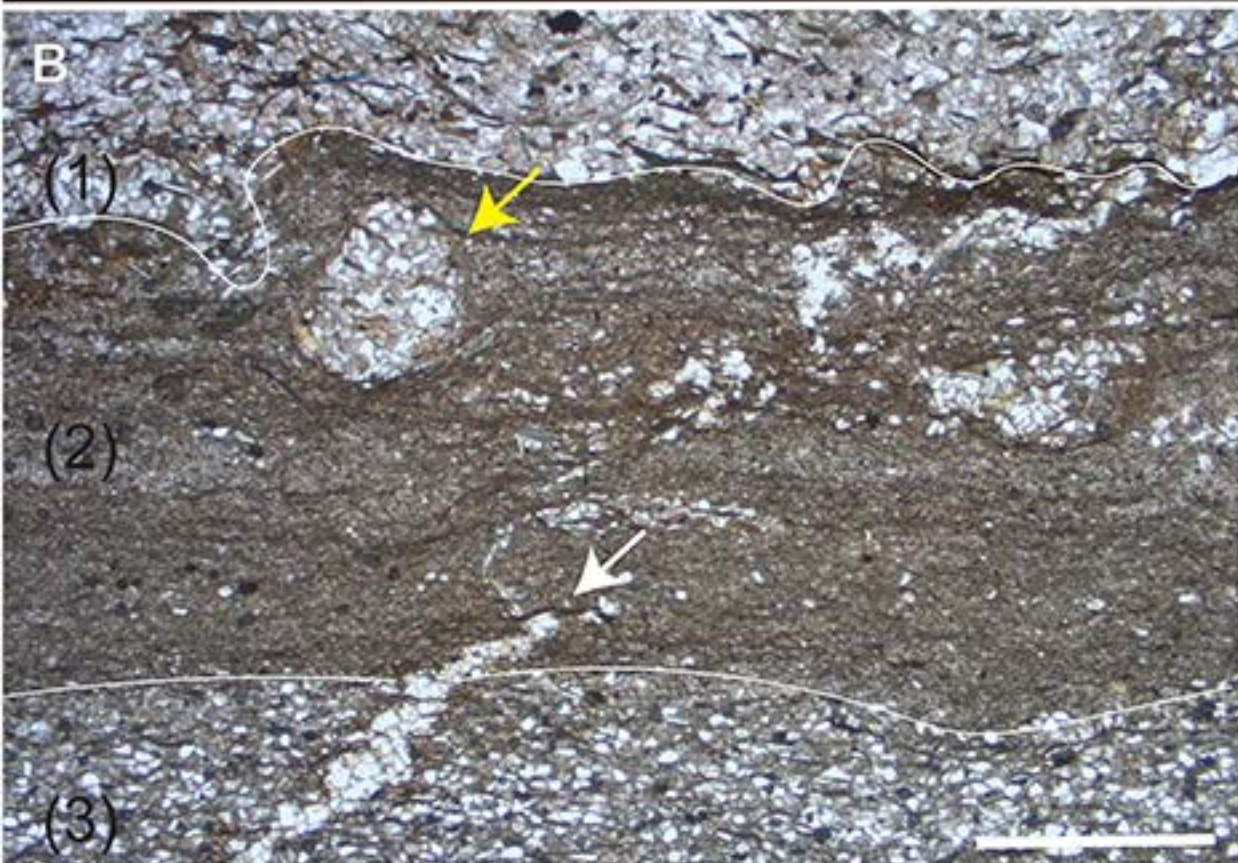
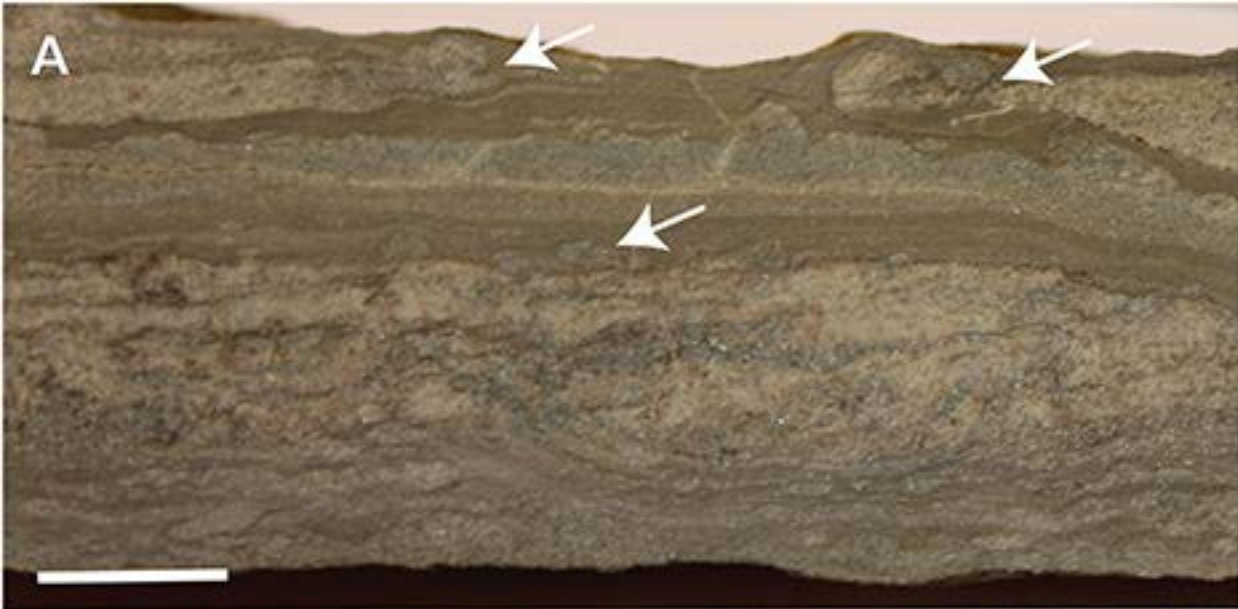


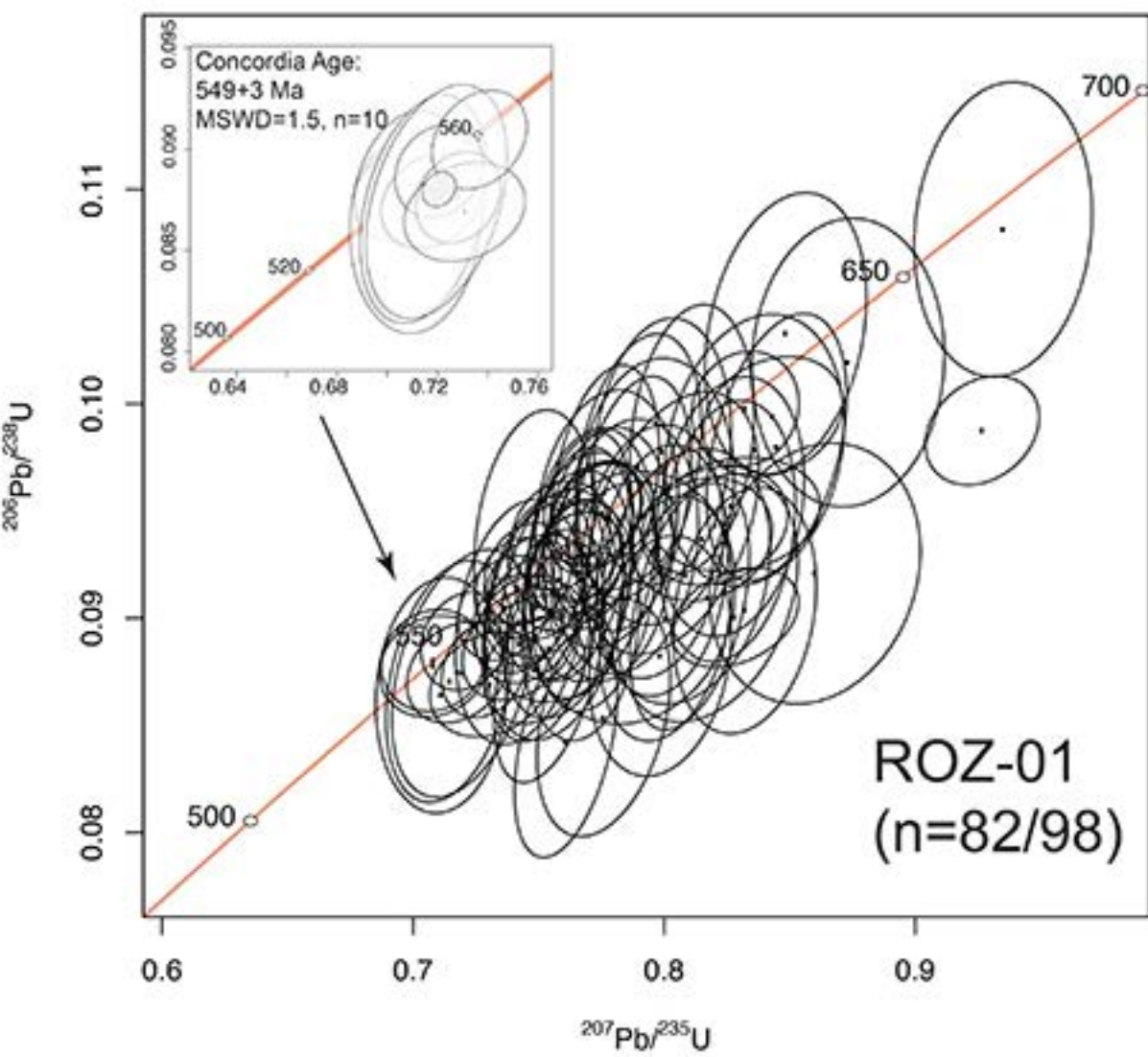
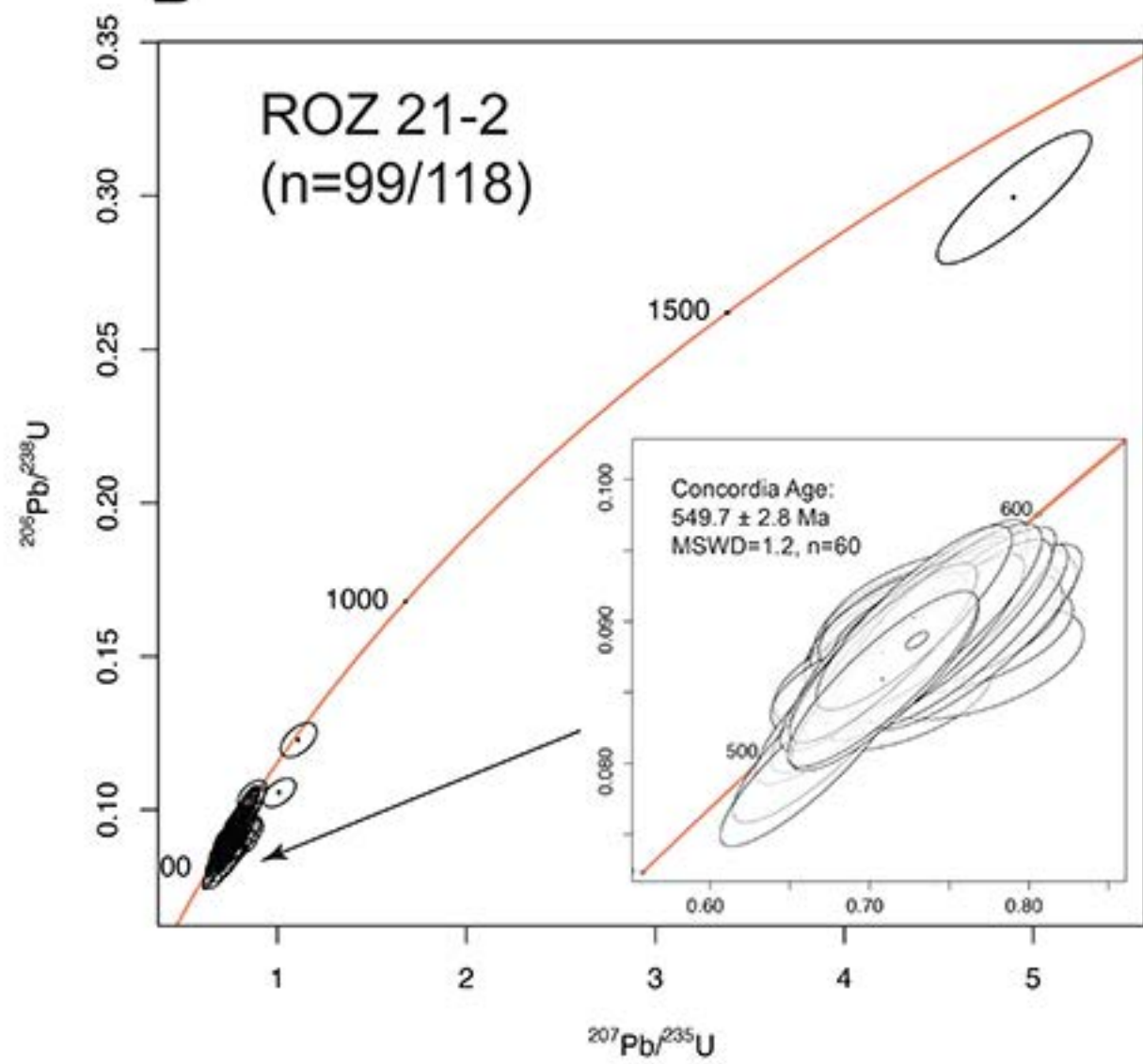
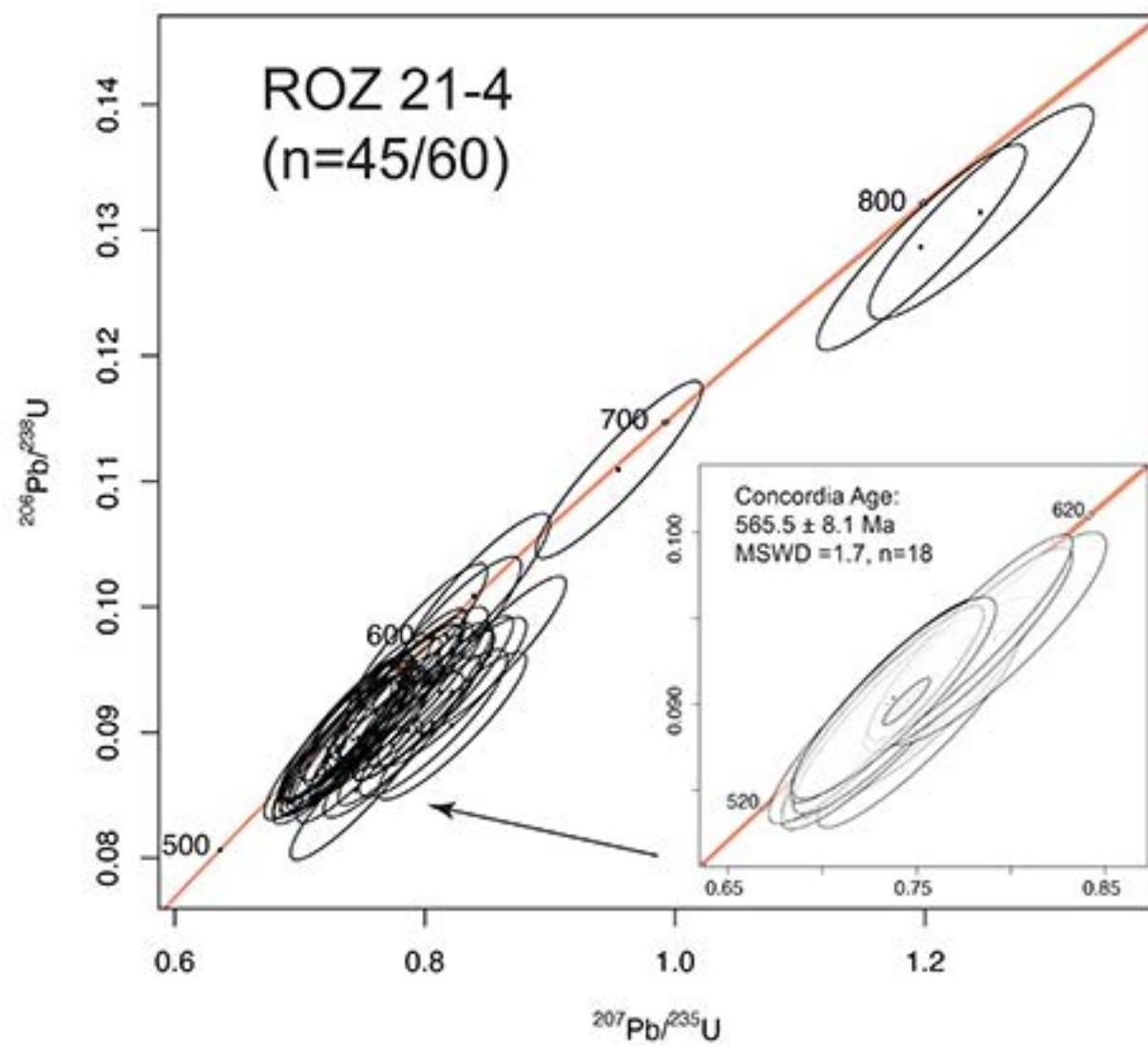
LOG 1

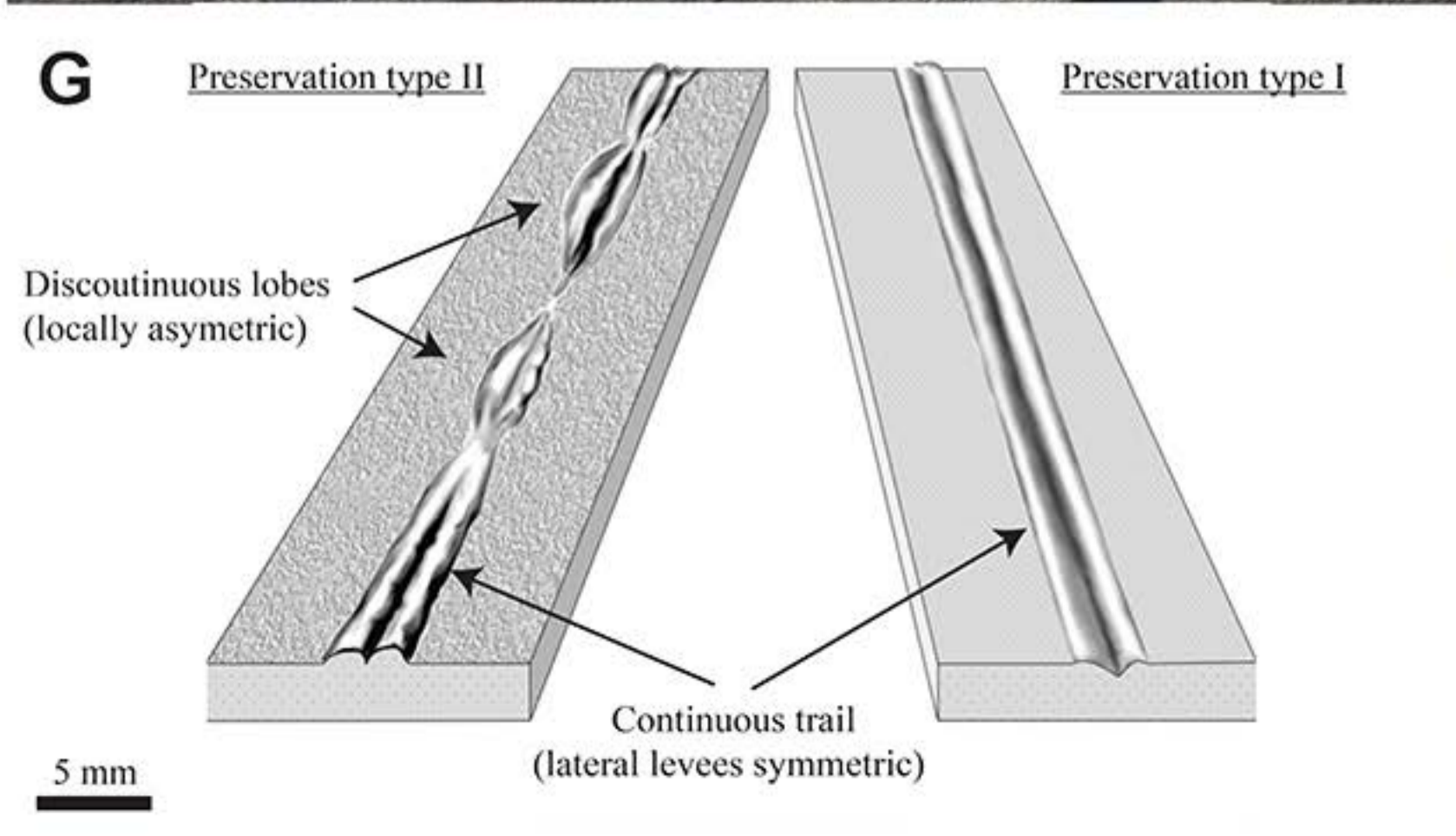
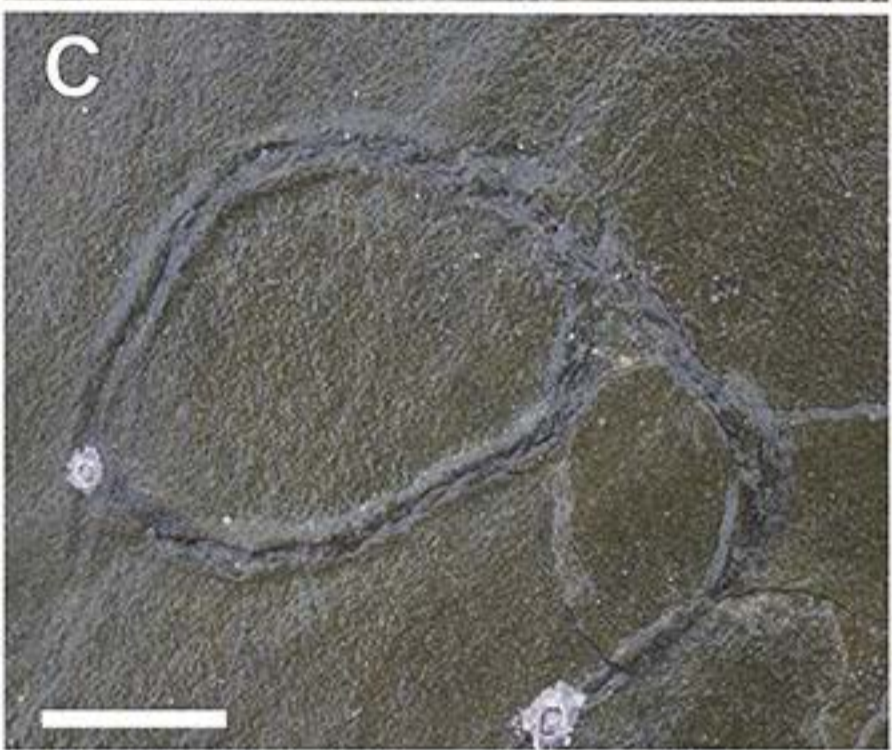
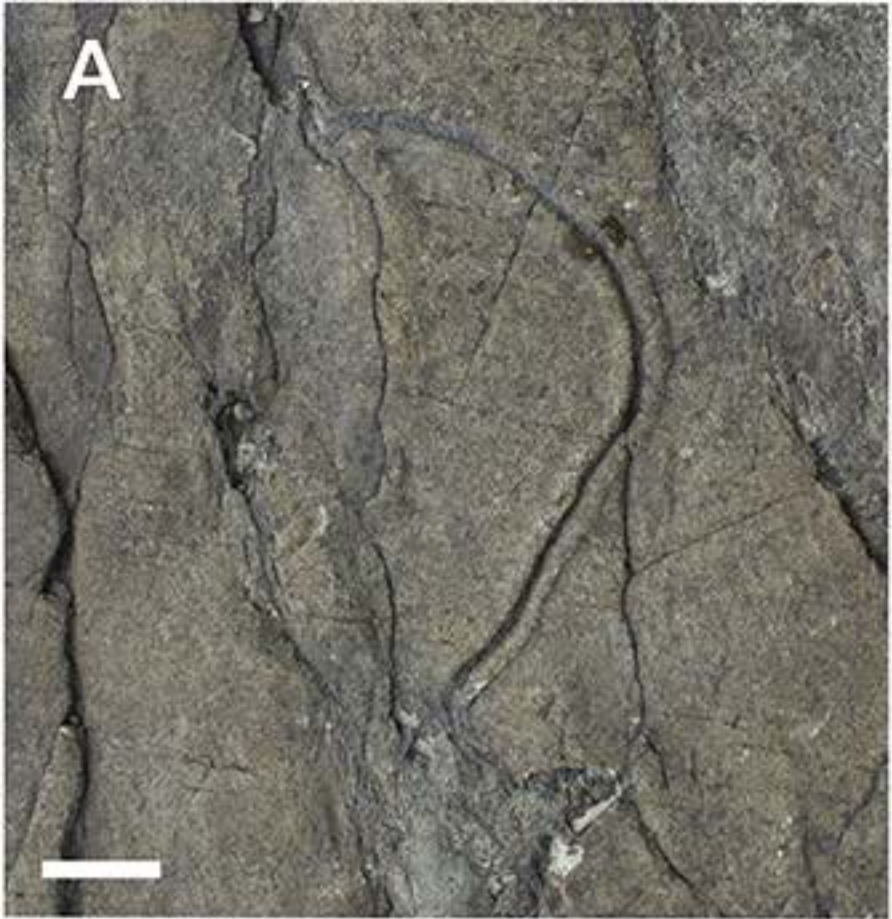


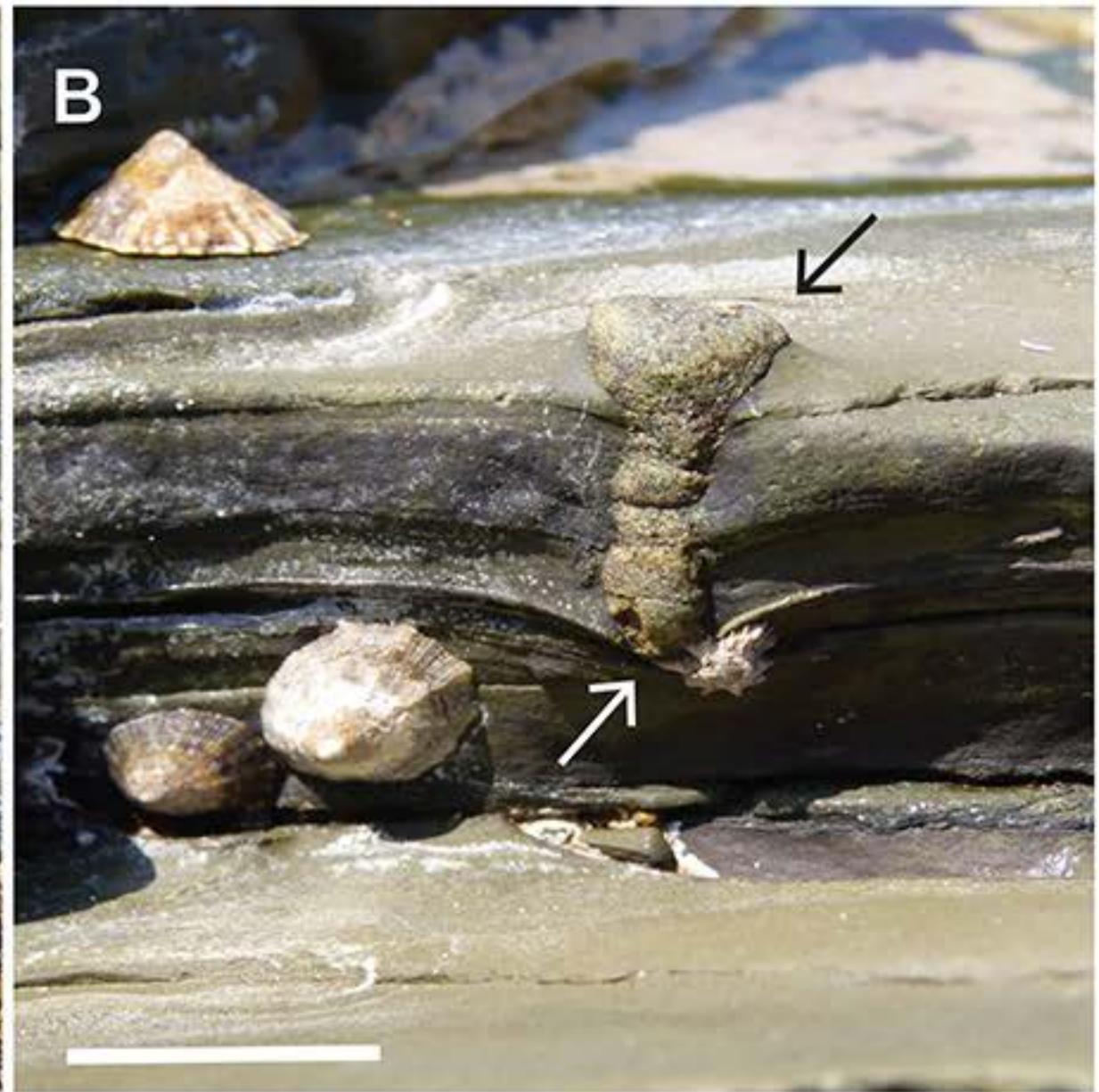
- ~ Flaser bedding
- < 2D unidirectional ripple
- Ar, Si, SVF... - grain size scale

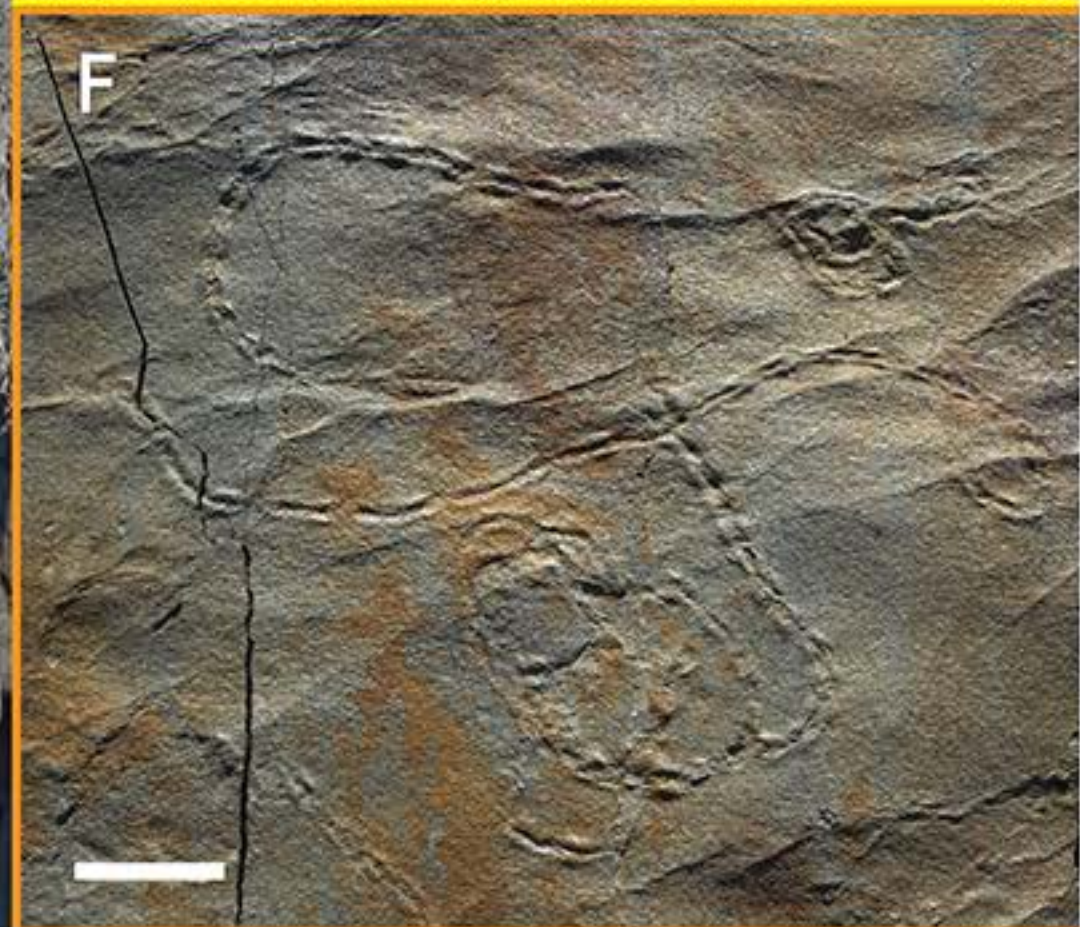
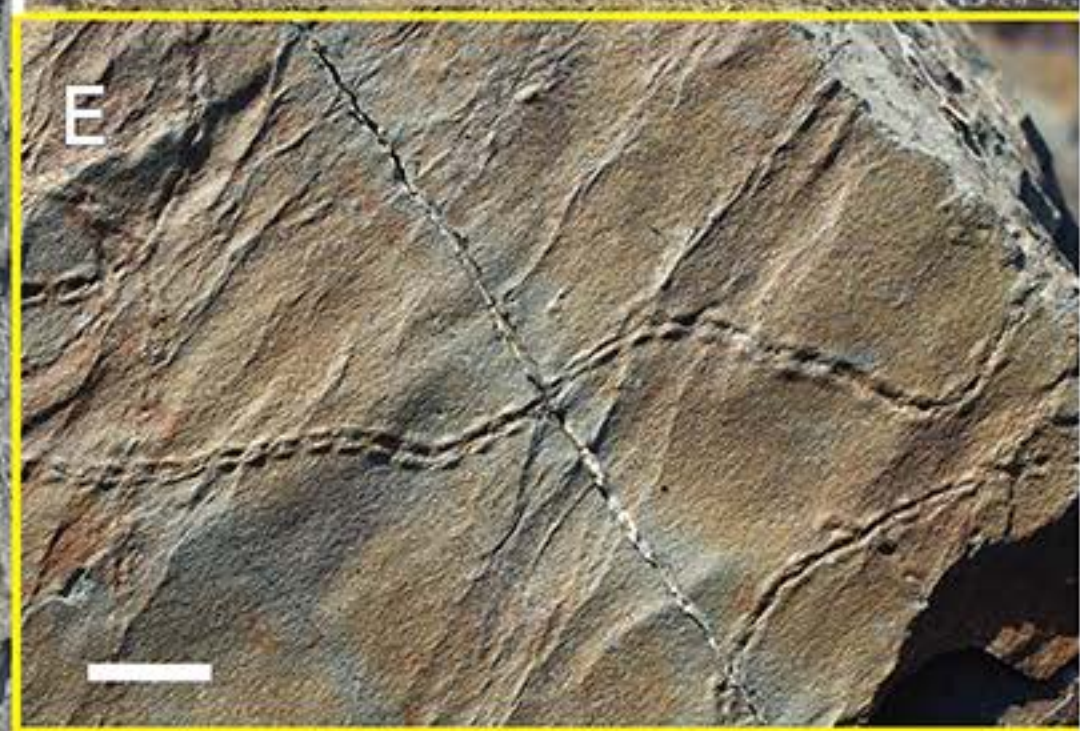
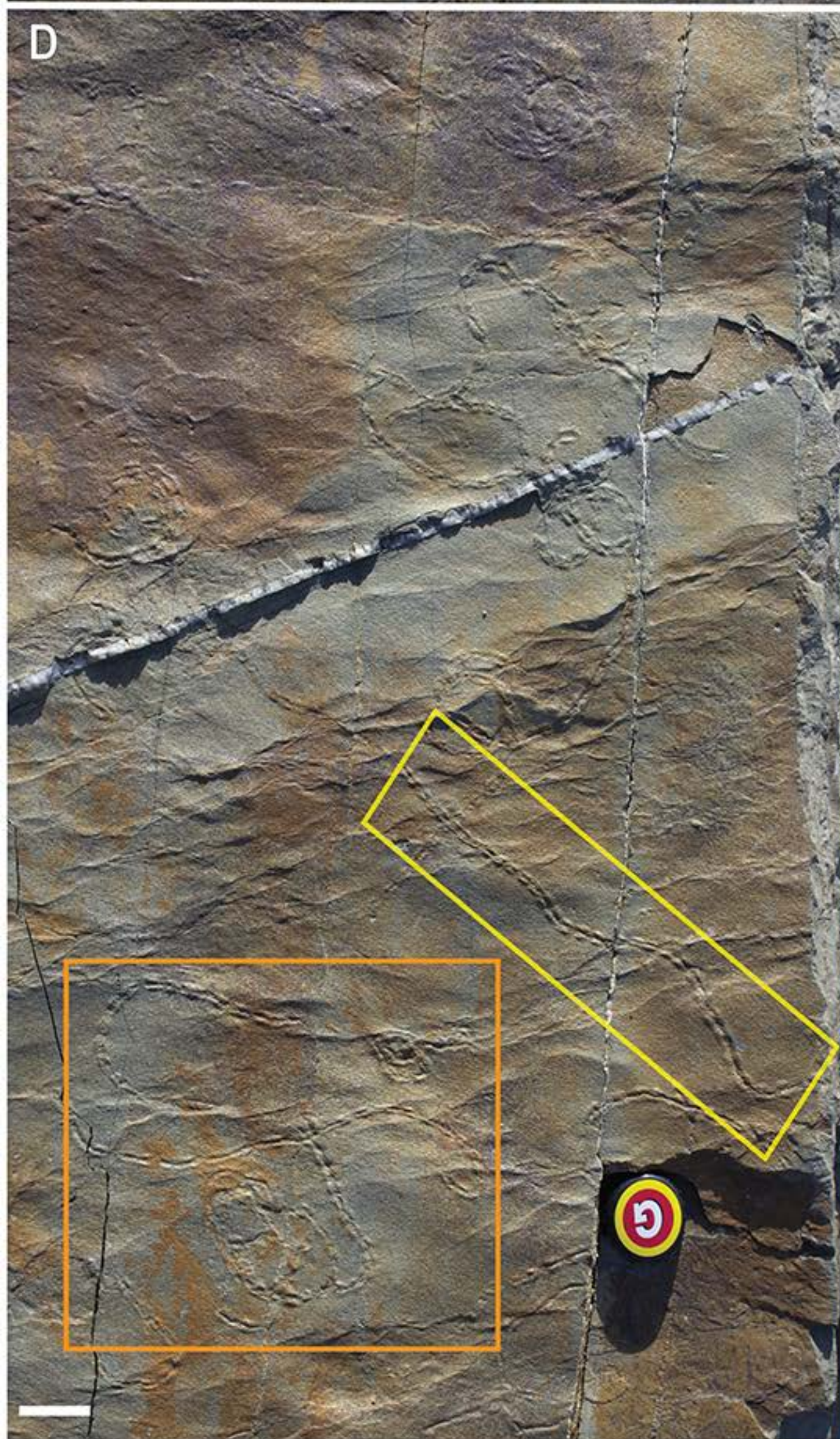


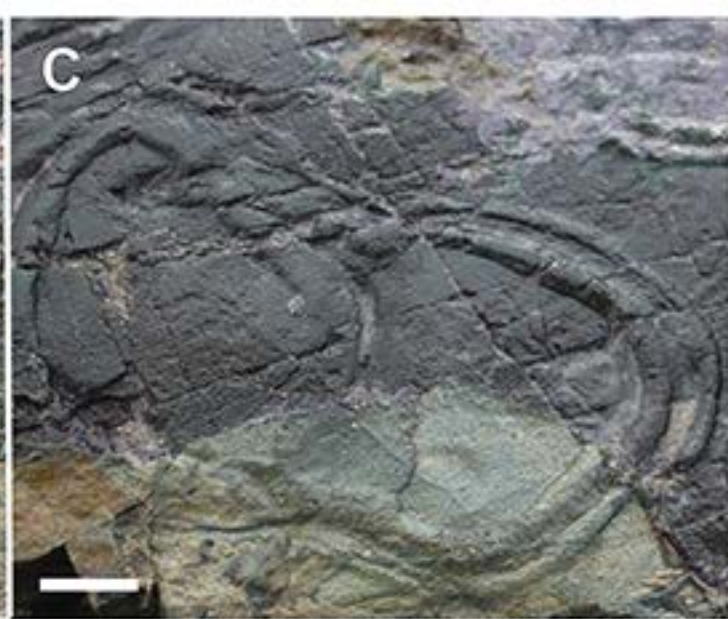


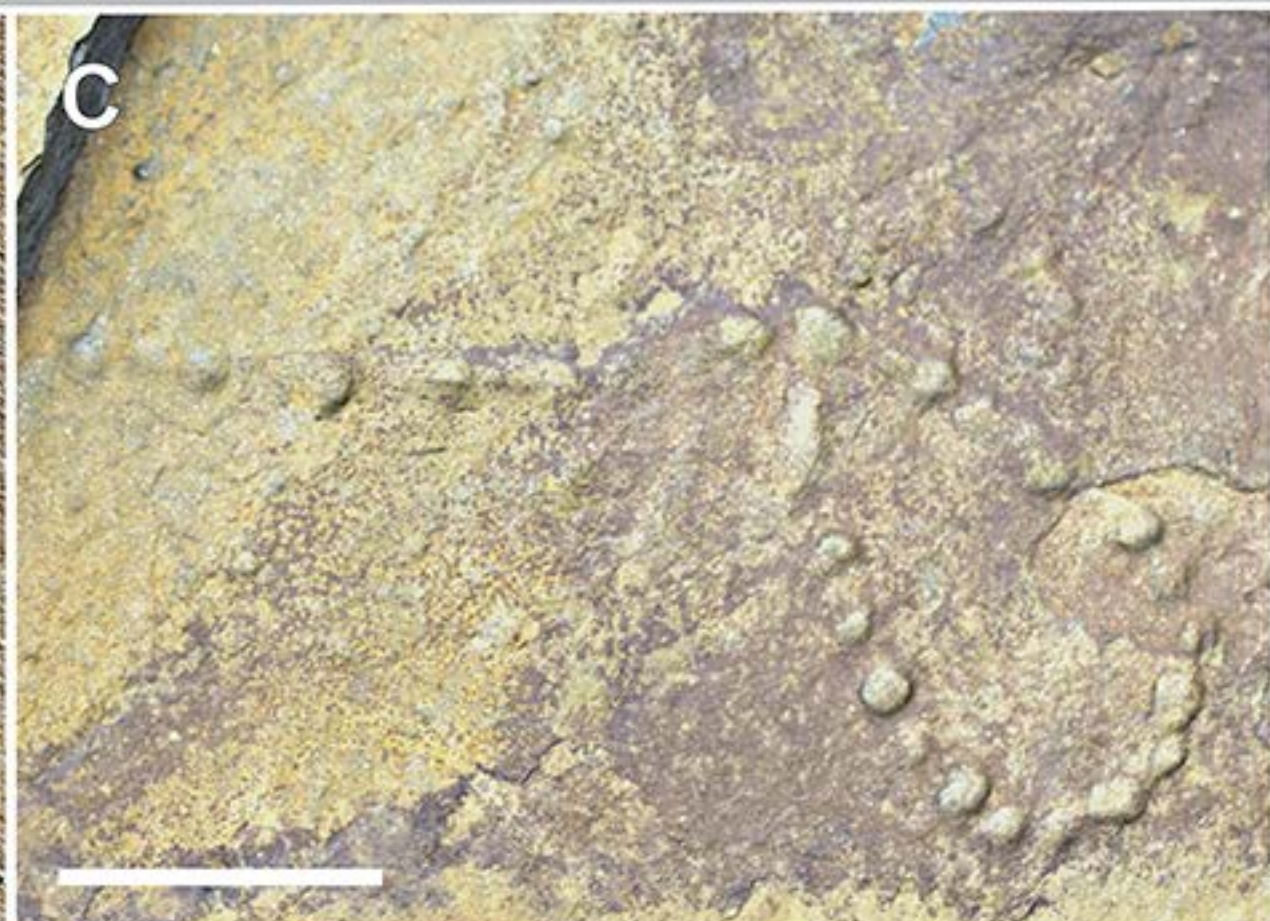
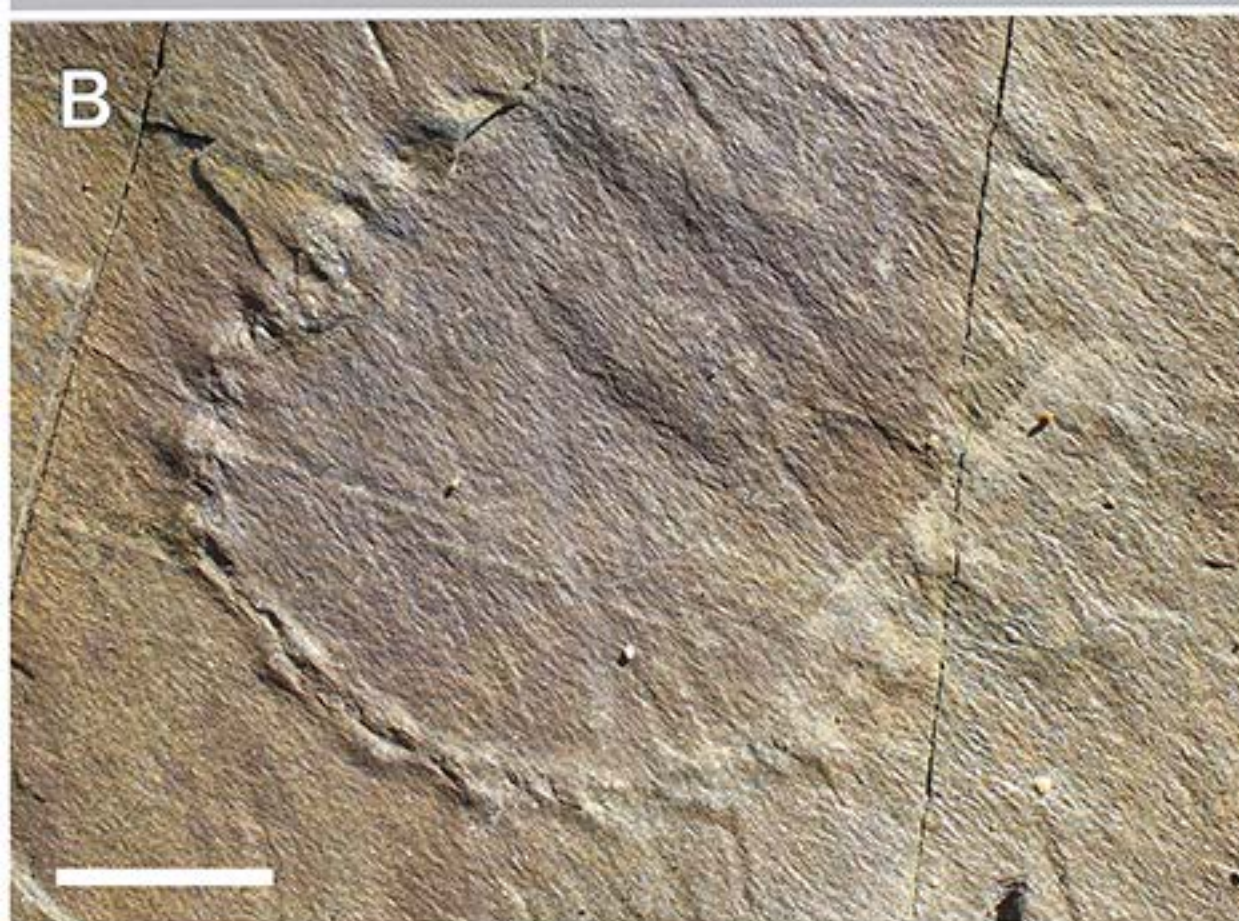
A**B****C**

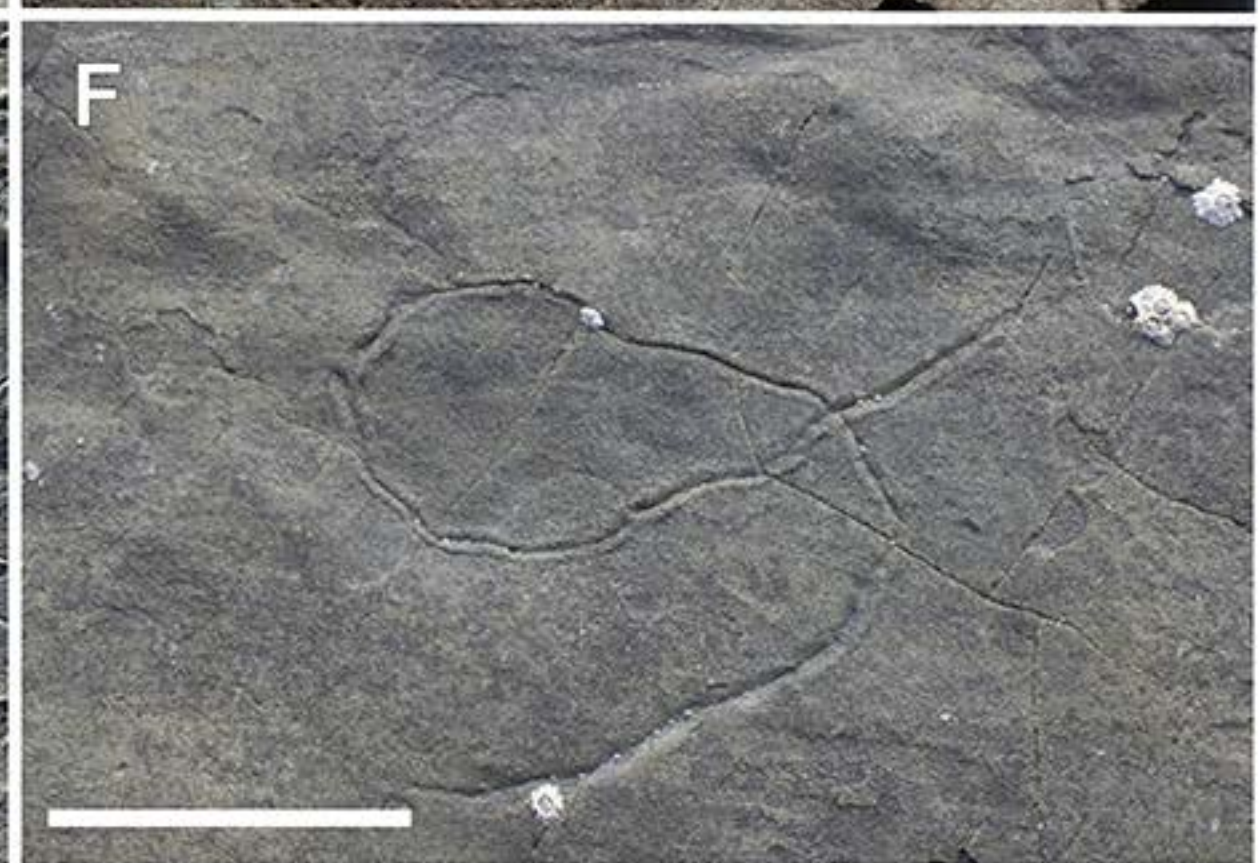
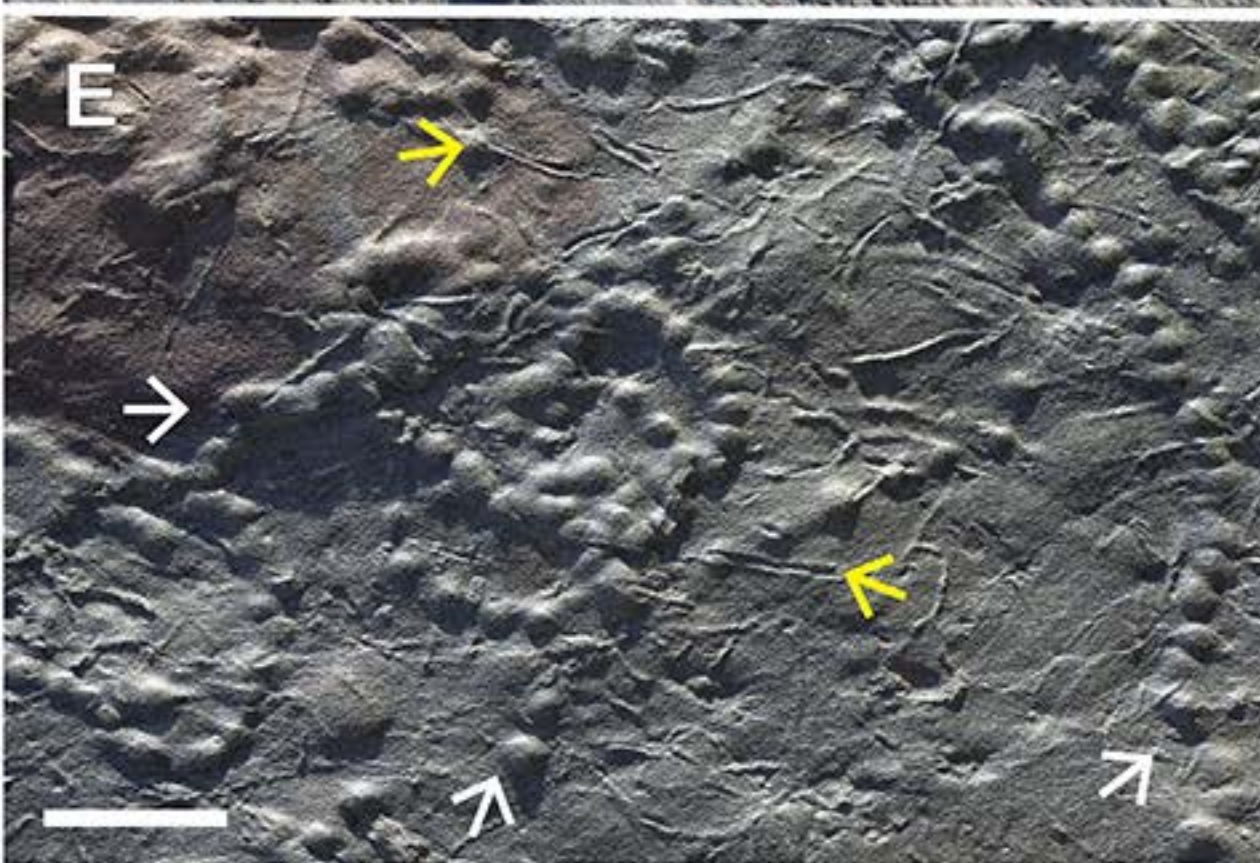
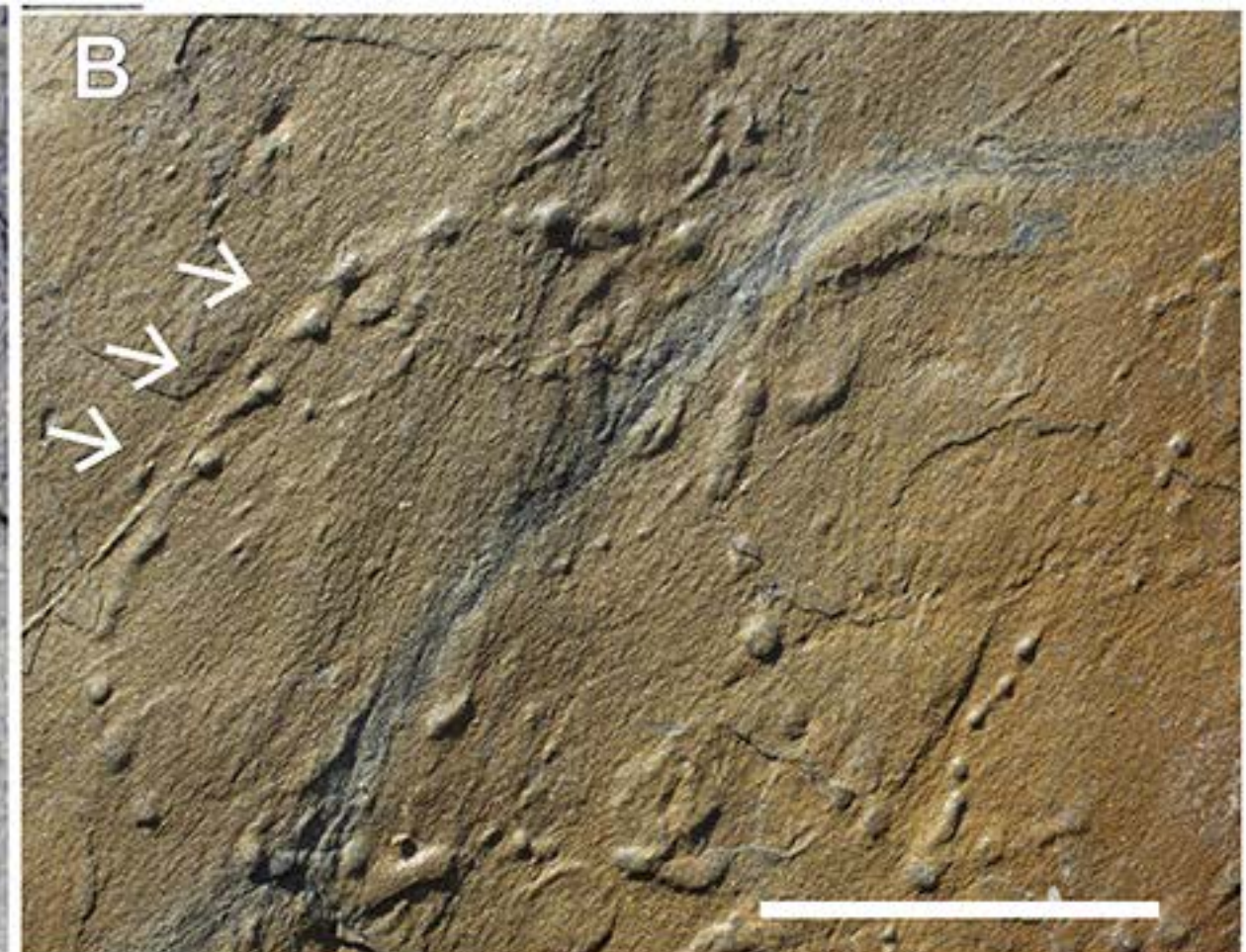
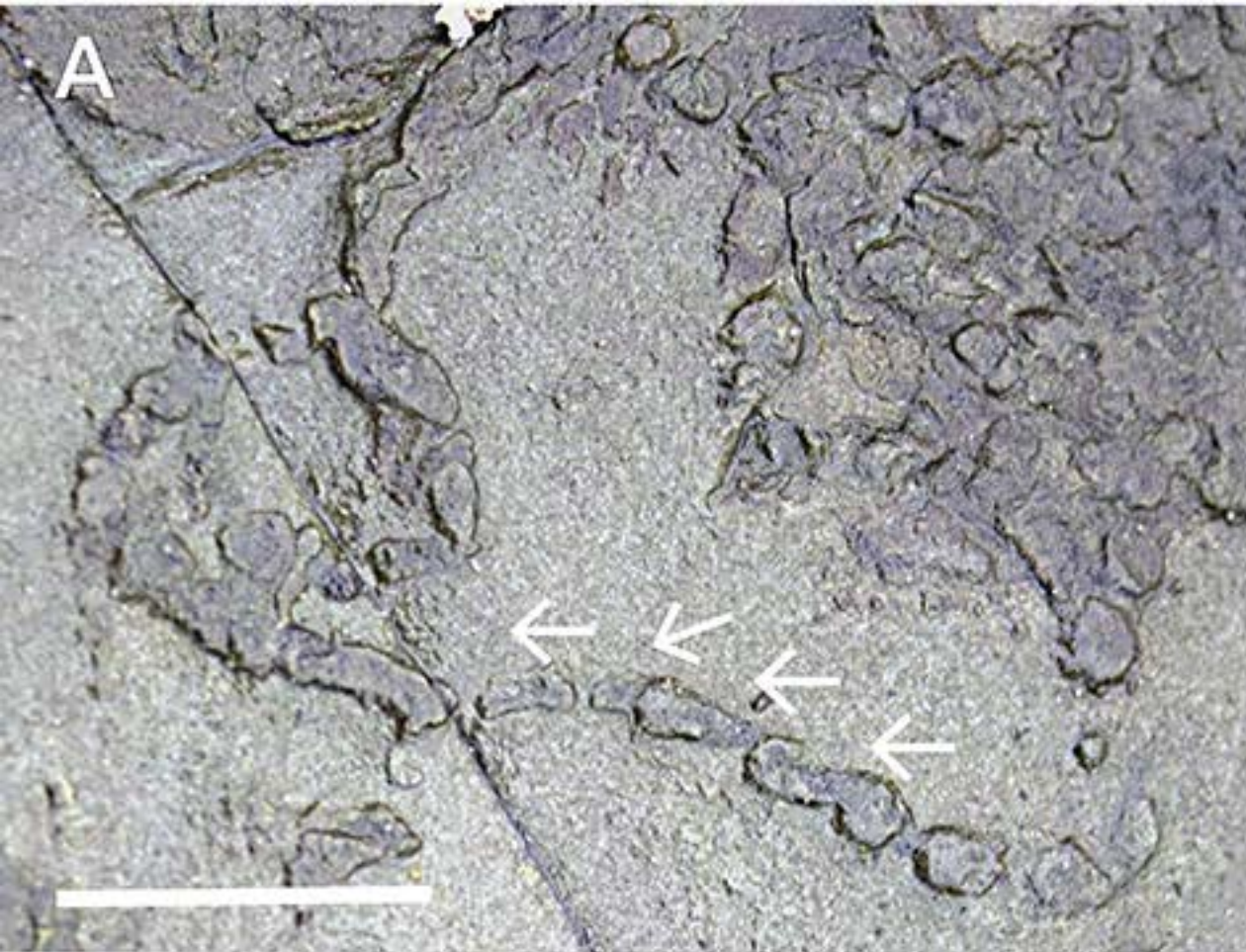


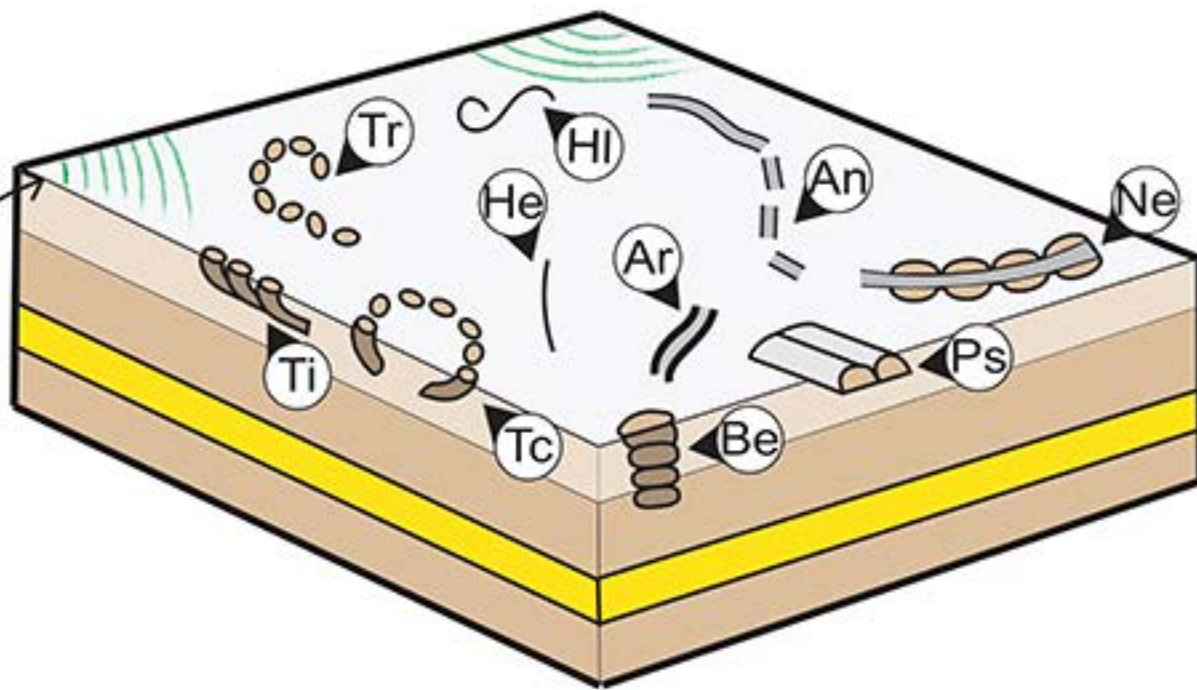










A

Patchy microbial mats

Trace fossils associated with microbial mats

B