

Building the Urban Bioregion

Governance scenarios for urban and territorial planning

Edited by

Anna Maria Colavitti and Sergio Serra



Building the Urban Bioregion

Governance scenarios for urban and territorial planning

Edited by

Anna Maria Colavitti and Sergio Serra

RST

RICERCHE E STUDI TERRITORIALISTI

COLLANA DIRETTA DA

Filippo Schilleci

La Collana *Ricerche e Studi Territorialisti*, pubblicata dalla SdT Edizioni, nasce da una precisa volontà della Società dei territorialisti e delle territorialiste. Le ragioni che hanno portato a questa scelta sono molteplici.

In primo luogo poter pubblicizzare, attraverso una corretta diffusione, i lavori della SdT. Anche se di recente costituzione, la Società ha già avviato molti studi e prodotto materiali che nella maggioranza dei casi non hanno avuto, ancora, una adeguata divulgazione nonostante gli incontri, locali e nazionali, abbiano richiamato studiosi che, con le loro testimonianze, hanno dato un valido contributo al dibattito scientifico.

Un secondo punto è strettamente legato alla struttura stessa della SdT che ha un'anima composta da studiosi di molte discipline che lavorano congiuntamente per sviluppare un sistema complesso e integrato di scienze del territorio (urbanisti, architetti, designer, ecologi, geografi, antropologi, sociologi, storici, economisti, scienziati della terra, geofilosofi, agronomi, archeologi). Questo aspetto, come è chiaramente espresso nel Manifesto della Società, è un punto di forza su cui puntare per dare valore ai lavori che si portano avanti.

La collana non vuole essere una collana di settore, non vuole rappresentare il mezzo di espressione di un pensiero monodisciplinare. Al contrario, riprendendo un altro dei principi della Società, pone le sue basi sui molteplici approcci presenti nelle scienze del territorio, considerando il territorio stesso come bene comune nella sua identità storica, culturale, sociale, ambientale, produttiva.

I prodotti della collana saranno espressione, quindi, del progetto territorialista che, come più volte testimoniato, si occupa, in una società contemporanea fortemente de-territorializzante, di produrre valore aggiunto territoriale, attraverso forme di governo sociale per la produzione di territorio con la finalità di aumentare il benessere individuale e sociale di coloro che lo abitano, vi lavorano o lo percorrono. I contributi saranno, inoltre, testimonianza dei diversi ambiti di ricerca-azione che attraversano il vasto campo delle arti e delle scienze del territorio.

La collana, anche attraverso la composizione del suo Comitato Scientifico, farà dell'internazionalizzazione un altro dei suoi punti di forza. Ciò, non solo per dare respiro internazionale alla collana, ma anche per poter contare su apporti che non si limitino ad esperienze e a punti di vista nazionali - come del resto sta già avvenendo per la rivista - così da incrementare il dibattito transdisciplinare e transnazionale.

La collana, inoltre, utilizza una procedura di referaggio in double blind peer review avvalendosi di revisori scelti in base a specifiche competenze.

Ricerche e Studi Territorialisti_9

© copyright SdT edizioni
Novembre 2022

email: collanarst.sdt@gmail.com
http: /www.societadeiterritorialisti.it/
ISBN 978-88-945059-6-2 (online)

COLLANA RICERCHE E STUDI TERRITORIALISTI
diretta da Filippo Schilleci

Comitato Scientifico

Giuseppe Barbera (Università di Palermo)
Alberto Budoni (Università di Roma “La Sapienza”)
Carlo Cellamare (Università di Roma “La Sapienza”)
Anna Maria Colavitti (Università di Cagliari)
Pierre Donadieu (École nationale supérieure de paysage di Versailles-Marsiglia)
Alberto Magnaghi (Università di Firenze)
Ottavio Marzocca (Università di Bari)
Alberto Matarán (Universidad de Granada)
Daniela Poli (Università di Firenze)
Saverio Russo (Università di Foggia)
Ola Söderström (Université de Neuchâtel)

Comitato Editoriale

Stefania Crobe
Annalisa Giampino
Chiara Giubilaro
Marco Picone
Vincenzo Todaro

In copertina: Anna Maria Colavitti, Sergio Serra, 2022, *The settlements of the Ogliastra polycentric network from the mountains of Arzana and Lanusei to the plains of Tortolì and Bari Sardo.*

CONTENTS

Introduction	8
<i>Anna Maria Colavitti, Sergio Serra</i>	
SECTION I – THEORIES, IDEAS AND FORERUNNING EXPERIENCES. BIOREGIONAL FUNDAMENTALS AS TERRITORIAL DEVELOPMENT MODELS	
The roots of the urban bioregion in the thinking of Patrick Geddes: from knowledge to citizens' involvement to build a new living	12
<i>Maria Rita Gisotti</i>	
Biomimicry as a tool for territorial planning	25
<i>Matteo Trincas</i>	
Exploitation of resources and human complexity: bioregional visions of territory as tools for overcoming the 'long century'	38
<i>Fabio Parascandolo</i>	
D'un SCoT prescriptif à un SCoT animateur: un retour aux sources de la proposition territorialiste biorégionale	52
<i>Emmanuelle Bonneau</i>	
Sardinia in hard changing times. Reflections on territory and new development models	65
<i>Anna Maria Colavitti</i>	
Conservation and bioregionalism. A methodological contribution for trans-disciplinary transitions	81
<i>Donatella Rita Fiorino</i>	
HORTUS CONCLUSUS. The Garden at the heart of Bio-region. Interpretations of idea of 'microclimate garden' into the city and landscape construction.	92
<i>Adriano Dessì</i>	

SECTION II – PROJECTS
BIOREGIONAL GOOD PRACTICES IN EUROPE

Sustainable Urban-Rural Relationships in Romania within the Paradigm of Urban Bioregionalism	108
<i>Oana-Ramona Ilovan, Ioana Alexandra Ciupe, Marian Marin</i>	
Impacts territoriaux de la congestion urbaine et trajectoires d'évolution des différents sous-espaces de l'aire métropolitaine bordelaise	134
<i>Ghislaine Deymier, Frédéric Gaschet</i>	
Metropolitan places for bioregional projects: hypothesis of federative strategies between metropolis and bioregion for French regional planning	164
<i>Luana Giunta</i>	
The broken bond: unveiling the contribution of farmers in planning the transition spaces	179
<i>Mirko Greco, Luca Lazzarini</i>	
Architectural Stenobionts. The importance of bio-micro-interventions in the urban structure of Poznań	201
<i>Maciej Janowski</i>	
Protection of urban greenery as part of a Bioregion	213
<i>Agnieszka Janowska</i>	
Good practises in special order and urban planning at the beginning of XXI century. Polish approach.	225
<i>Adam Nadolny</i>	
The system of protected areas as the core element in a new vision of the Metropolitan City of Palermo	244
<i>Filippo Schilleci</i>	
Bioregional experimentations in Central Tuscany: the Left Bank of Arno Agricultural Park project and the Montalbano Organic District	257
<i>Elisa Butelli</i>	

SECTION III - NEW LOCAL APPROACHES
BIOREGIONAL EXPERIENCES IN SARDINIA REGION

City-Countryside. Principles, invariants and project.	272
<i>Carlo Atzeni, Francesco Marras</i>	
Smart Tourism Governance for Urban Bioregion: An Evaluating Approach to the Relationship between Coastal and Inland Areas of South Sardinia	290
<i>Alfonso Annunziata, Giulia Desogus, Chiara Garau</i>	
A possible network of agreement for Santa Gilla lagoon in Cagliari	310
<i>Michela Mascia</i>	
Bioregional planning for the recovery and valorisation of military heritage in small Mediterranean islands. The experience of San Pietro island in Sardinia	326
<i>Alessia Usai</i>	
Local identity and territorial patterns in the Cagliari's bioregion	343
<i>Francesco Pes</i>	
Territorial dynamics and settlement development in low-density areas. The case of Ogliastra in Sardinia	356
<i>Alessio Floris, Sergio Serra</i>	
Green infrastructure and protected areas: A study concerning Sardinia	373
<i>Sabrina Lai, Federica Leone, Corrado Zoppi</i>	
Collaborative geodesign: sustainable scenarios for the Cagliari metro area	393
<i>Michele Campagna</i>	

Green infrastructure and protected areas: A study concerning Sardinia¹

Sabrina Lai, Federica Leone, Corrado Zoppi

Abstract

According to the European commission, green infrastructure (GI) is conceived as a strategically planned network of natural and semi-natural areas. This definition highlights three important issues: environment protection, ecosystems multifunctionality and ecological connectivity. Building upon a methodology that identifies a Sardinian regional GI in relation to four values (conservation value, natural value, recreational value and landscape value), this study aims at assessing the suitability of areas situated within and outside protected areas' boundaries to be included in the above-mentioned Sardinian regional GI. In relation to conservation value, outcomes reveal a higher suitability of patches situated within protected areas to be included in the regional GI, whereas in relation to the other three values, the behavioral patterns are less evident. These results suggest specific policy recommendations such as mitigation of land-taking processes, increase of Natura 2000 Network's size, accurate identification of landscape goods, and improved accessibility to sites characterized by outstanding natural beauty.

KEYWORDS: green infrastructure; ecosystem services; Natura 2000 Network; environmental planning.

1. Introduction

This study builds upon a methodology applied in previous studies by Arcidiacono et al. (2016) and by Lai and Leone (2017), which both map a regional GI taking an Italian region as a case study. In the former, a GI for Lombardy was identified as a multifunctional GI taking into account three values: natural value, recreation value, and landscape value. In the latter, a

¹ This chapter is extracted from: Lai S., Leone F e Zoppi C. (2018), "Implementing green infrastructures beyond protected areas", *Sustainability*, vol. 10, 3544; doi:10.3390/su1010354413

Sardinian GI was identified based upon four factors, i.e., adding to the three values used in Arcidiacono et al. (2016) a fourth layer accounting for conservation value.

Conservation value (VAL_C) is based on the presence of areas whose natural characteristics are particularly important because hosting habitats rare, endangered, or representative of European biogeographical regions (i.e., habitats of community interest under the provisions of the Habitats Directive (no. 93/43/EEC)). Such habitats are meant to be maintained or restored in a favorable conservation status, and their presence calls for the designation of Natura 2000 sites, when criteria listed in Annex III of the Habitats Directive (concerning representativity, size, conservation status, and significance of the site) are met. According to a recent study (SALOMAA ET AL. 2017) carried out to explore Finnish experts' perceptions on GI implementation, the importance of GI in relation to biodiversity conservation has been emphasized by the majority of respondents. Moreover, GI can contribute to the reduction of habitat fragmentation which is one of the primary causes of species extinction (WEBER ET AL., 2006).

Natural value (VAL_N) is related to biodiversity's capacity of providing ecosystem services (ES); hence, it implies ecological integrity and current levels of ecosystem functions, key to supplying human-demanded ES. As such, under the Millennium Ecosystem Assessment (2003) classification it would be categorized under the supporting services group. In the literature, trade-offs between ES are often analyzed and assessed through land use/land cover changes (SHARMA ET AL., 2018; POLASKY ET AL., 2011; YANG ET AL., 2018). For example, Yang et al. (2018) studied the impacts of land use changes on ES trade-offs in the case of Yahne watershed in the Loess Plateau, China. In particular, their study investigates land use patterns that mitigate conflicts between food supply and conservation measures in order to be included within future restoration policies.

Recreation value (VAL_R) concerns the landscape attractiveness for recreational activities. Landscapes and natural habitats are accounted for when choosing holiday locations or doing outdoor activities (prominently, active tourism), thus they positively affect both local communities' and tourists' quality of life and wellbeing, while also benefitting local economies. Therefore, recreation value accounts for cultural ES, as classified by the Millennium Ecosystem Assessment (2003). In the literature, recreation value is assessed through monetary analyses (SERKAN, REHBER, 2008; MARTÍN-LÓPEZ ET AL., 2009; LANKIA ET AL., 2015; MAYER, WOLTERING, 2018) or through non-monetary analyses (HEAGNEY ET AL., 2018; FONT, 2000; RALL ET AL., 2018). In

the last decades, non-monetary methods based on social media approaches have been used to assess recreation value (WOOD ET AL., 2013; SONTER ET AL., 2016; HAUSMANN ET AL., 2018). For instance, Cunha et al. (2018) evaluated recreation services combining social media-based methods (using the InVEST recreation model) and official data sources in the Northwest coast of Portugal.

Finally, Landscape value (VAL_L) accounts for the interactions between natural and human factors that have shaped European cultures, as per the European Landscape Convention, and it is here assessed based on the endowment of natural and cultural resources, which are identified as landscape-related goods by the Italian Code on cultural goods and landscape (Law enacted by decree no. 2004/42). Various authors have highlighted the importance of landscape value within spatial planning (ZOPPI, LAI, 2010; ORANTES ET AL., 2017) and also in relation to the definition of GI (ARCIDIACONO ET AL., 2016).

Once a regional GI is identified, the eligibility of areas located inside and outside protected areas (national and regional parks, sites protected under the provisions of the Ramsar Convention and sites belonging to the Natura 2000 Network, identified with reference to the Habitats Directive and to the Birds Directive (no. 2009/147/EC)) are assessed on the basis of the four factors indicated above.

The discussion on the relationship between the regional GI and protected areas provides important insights concerning the definition and implementation of spatial planning policies aimed at increasing the ecosystems' capacity of providing services by spreading environmental protection beyond the boundaries of protected areas, and by proposing a holistic planning approach based on the implementation of the regional GI.

The study is structured as follows. The next section describes the methodological approach and the regional context for its implementation. The third section shows the results concerning the spatial taxonomy of the eligibility of areal units to be part of the Sardinian regional GI, on the basis of the four factors indicated above. In the final section, the outcomes and proposed directions for future research are discussed.

2. Materials and Methods

The Sardinian region, an Italian island of approximately 24,000 km² in size, is here taken as a case study. Protected areas (which include national parks, regional parks, Natura 2000 sites, and wetlands of international importance, hereinafter 'Ramsar sites') concern around 19% of the island's land mass. Since

2006, a Regional Landscape Plan (RLP) is in force; such plan does not contain any provisions for a regional GI.

As Fig. 1 shows, two national parks, four regional parks, five marine protected areas, 125 Natura 2000 sites and eight Ramsar sites are included in the study area.

As stated in the introduction, VAL_C accounts for the presence of natural habitats regarded as worth preserving in a favorable conservation status by the European commission. VAL_C is here computed following the methodology provided in a regional report (CRITERIA; TEMI, 2014a), where habitats of community interest are classed and prioritized with a view to defining a regional monitoring plan. VAL_C is assessed only in those areas where habitats of community interest have been identified, as:

$$(1) \quad VAL_C = P \times (R + T + K)$$

where:

- P stands for priority; it accounts for the presence and significance, in a given land parcel, of habitats of community interest as listed in Annex I of the Habitats Directive, and can only take three values: P = 0 if no habitats of community interest are present (which also entails that in such cases VAL_C = 0); P = 1.5 in case of a priority habitat (these are defined as natural habitat types in danger of disappearance, calling for an early implementation of conservation measures, and marked with an asterisk in Annex I of the Habitats Directive); P = 1 otherwise;
- R stands for rarity and, for each habitat, it is quantified based on the habitat's occurrences within the Sardinian Natura 2000 standard data forms, normalized in the (1–5) interval. The fewer the occurrences, the higher R is;
- T stands for threats and is quantified based on the number of threats listed in the regional Natura 2000 standard data forms, normalized in the (1–5) interval. The more the threats for a given site, the higher T;
- K stands for knowledge, which was assessed, for each habitat, by experts in the field of natural conservation within a regional monitoring program (CRITERIA; TEMI, 2014b) by using qualitative judgments (good, acceptable, sufficient, poor). In this study, the qualitative score was next turned into a quantitative one, within the (1–4) interval. The maximum achievable score is lower than those of both R and T to take into account the subjectivity embedded in the experts' judgments. Incorporating expert knowledge in assessing ecosystem values and services is a common approach that can be found, for instance, in

Burkhard et al. (2009; 2012), or in de Groot et al. (2010). The lower the level of knowledge on a given habitat, the higher K is, because, in line with the precautionary principle, low knowledge on a certain habitat's spatial distribution and conservation status calls for greater attention and stricter conservation measures.

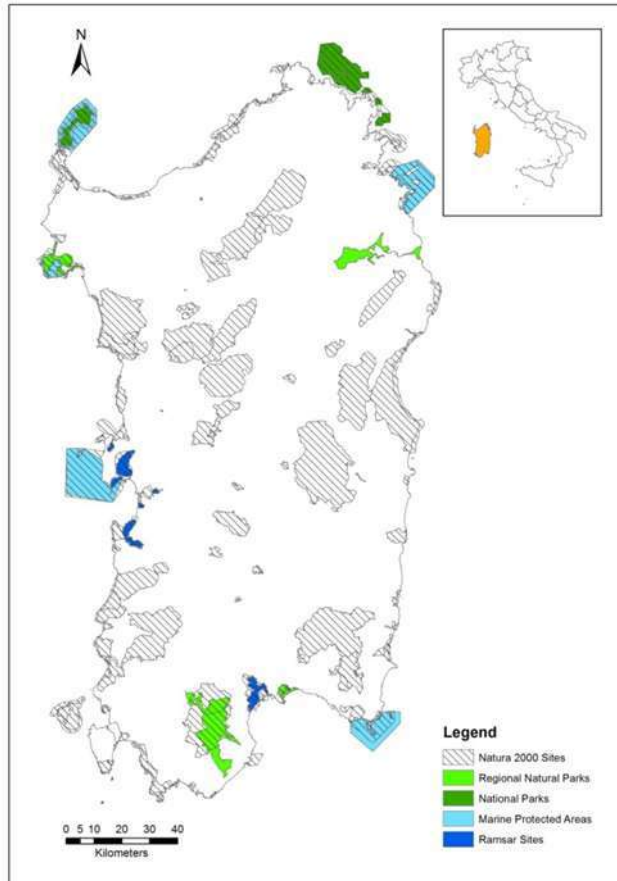


Fig. 1 - Study area.

As for the spatial identification of the regional GI, the methodology developed by Lai and Leone (2017) is applied here. Hence, four factors (VAL_C , VAL_N , VAL_R , VAL_I) representing the landscape's multifunctional character are calculated and mapped using GIS.

As a result, VAL_C can range between 0 (where no habitats of community interest are present) and 21. The values were next normalized in the (0–1) interval.

VAL_N is assessed and mapped using the ‘Habitat quality’ model of the ‘InVEST’ software program and ranges between 0 and 1. Input data used to feed the model are provided in Tab. 1.

VAL_R was assessed and mapped using the InVEST model ‘Visitation: recreation and tourism’, which harvests data from the social media Flickr, whose users can upload georeferenced pictures. The area of interest is fed into the model, which next calculates the ‘photo-user-day’ (PUD), i.e., the total number of pictures uploaded by each single user in a certain cell (whose size is set by the modeler) and in a single day. PUD was assessed within cells of 500*500 meters and considering pictures uploaded between 2010 and 2014. VAL_R equals PUD normalized in the (0–1) interval.

VAL_L refers to landscape assets as listed in, and protected by, the RLP. For each type of asset, a score ranging from 0 to 1 was assigned by experts. The higher the score, the stricter the rules provided within the plan to preserve that specific type of asset, and hence the higher the landscape value implied within the plan. In the event of overlapping landscape assets, the score corresponding to the strictest protection level in that area was assigned.

Tab. 1 - Input data used for the Habitat quality model, data used and authors’ elaborations

<i>Required Input</i>	<i>Data Used</i>
Land use/land cover map	Regional vector land cover map produced by the Regional administration of Sardinia in 2008, third level of the CORINE nomenclature, rasterized.
Threats to habitats	A list of threats to biodiversity, identified on the basis of Natura 2000 standard data forms pertaining to Sardinian Natura 2000 sites. To each threat, a weight and a distance decay were assigned based on the outcomes of a survey involving five selected experts in the field of biodiversity and environmental assessments.
Impact sources	A raster map showing the spatial distribution of each of the 10 above-mentioned threats.

Accessibility to sources of degradation	A vector map describing accessibility to sources of degradation, under the assumption that the stricter the legal/institutional protection, the lower the accessibility. On this basis, the following three protection levels were mapped: regional and natural parks, together with public woods managed by the Regional forestry agency (highest protection level: accessibility set to 0.2); Natura 2000 sites (intermediate level: accessibility set to 0.5); and the remaining part of the island (lowest level: accessibility set to 1).
Habitat types and sensitivity of each habitat to each threat	A matrix listing land cover types (third level of the CORINE taxonomy) in the first column; for each land cover, a (0–1) score of its suitability to be regarded as habitat (second column), and a (0–1) score of its sensitivity to each of the 10 above-mentioned threats (3 rd to 12 th column) is given; sensitivity levels were assigned through an expert-based approach.
Half-saturation constant	Default value (i.e., 0.5).

VAL_C, VAL_N, VAL_R, and VAL_I, all taking values between 0 and 1, were mapped and summed using GIS techniques, which returned a map showing the total value (VAL_T), ranging from 0 to 4.

This study aims to assess whether and how each of the four values affects the suitability of areas (within or outside protected areas) to be part of a regional GI. To this end, two macro-categories were differentiated: a) natural protected areas (including national parks, regional parks, Natura 2000 sites, Ramsar sites); b) the rest of the island (unprotected areas). Among natural protected areas, marine protected areas were not included because the analysis only concerns terrestrial areas. VAL_T occurrences were arranged into tertiles. For both macro-categories (i.e., natural protected areas and unprotected areas), for each VAL_T tertile and for each of the four values (i.e., VAL_C, VAL_N, VAL_R, and VAL_I), parcels showing null values were observed and the percentage of their area with respect to the total area of the macro-category in the tertile was calculated. For both macro-categories and for each tertile, the means, medians and standard deviations of each of the four values were also taken into account.

This study focuses on the definition of spatial planning policies aiming at enhancing the environmental quality of the Sardinian region by increasing the size of the regional GI. These policies concern areas that are not eligible to be

part of the regional GI, that is, the patches taking null values in terms of VAL_T. These areas are targeted for improvement in their present status of non-eligibility in order to increase the size of the regional GI, and, by doing so, the dissemination of its beneficial effects. Results, discussion and conclusions compare the outcomes related to VAL_T and its four determinants with regards to protected and unprotected areas, and identify policy recommendations taking account of the findings coming from this comparative assessment, based on the analysis of the spatial taxonomy of null values of VAL_T.

3. Results

The outcomes of the analysis are provided in Fig. 2 and 3, and Tab. 2.

The three smaller frames on the right-hand side provide, at the local scale, some examples concerning (top to bottom) VAL_C, VAL_L, and VAL_N. As for VAL_C, the detailed map makes it evident that in the surroundings of Bosa (a historic town in north-west Sardinia, a quite renowned tourist destination), large patches of habitats of community interest are located between two protected areas (namely, SAC ITB020041 'Entroterra e zona costiera tra Bosa, Capo Marargiu e Porto Tangone' and SAC ITB020040 'Valle del Temo' to the left, and SPA ITB023050 'Piana di Semestene, Bonorva, Macomer e Bortigali') outside their boundaries. Thus, such habitats currently do not enjoy any protection under the Habitats Directive.

With regard to VAL_L, the detailed map shows that inside the SCI ITB041112 'Giara di Gesturi', a basaltic plateau in the inner part of the island, known for its temporary ponds, cork trees, and wild horses, some small patches of land taking high values of VAL_L can be found. These mainly refer to 'nuraghi', prehistoric megalithic buildings that date back from the second millennium B.C. to the Iron Age (DE MONTIS, CASCHILI, 2012) and that are a distinctive feature of Sardinian prehistoric culture. Only some rough estimates of the total number of nuraghi in the whole of Sardinia are available, ranging from around 7000 (BLAKE, 1998) to more than 7000 (MINCHILLI, TEDESCHI, 2017) to more than 8000 (RENDELI, 2017), with many either incorrectly located or not unearthed yet. Finally, the third frame concerns the area between the SCI ITB041105 'Foresta di Monte Arcosu' (partly included in a regional park) to the left and the SAC ITB040023 'Stagno di Cagliari, Saline di Macchiareddu, Laguna di Santa Gilla' (partly designated also as SPA), in the outskirts of the island's capital city, Cagliari, to the right. As the detailed map shows, while inside the two protected areas, VAL_N takes very high values, between the two protected areas low values

can be found. This is mainly due to three reasons: first, the land cover, when not artificial, is seminatural as opposed to natural; second, the high accessibility due to the presence of main road infrastructure; and third, the presence of a large industrial site, including an incinerator, a windfarm, a saltpan, and what remains of industrial buildings and activities installed in the second half of the 20th century.

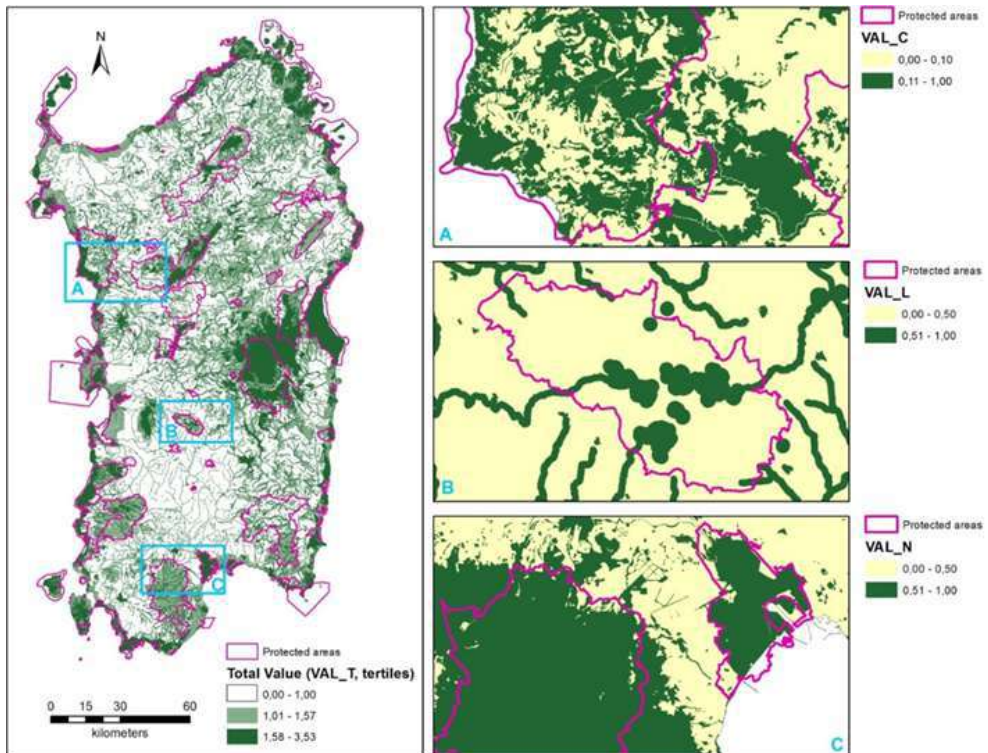


Fig. 2 - Spatial distribution of the total value (VAL_T), classed into three tertiles (left); some local examples concerning VAL_C (a), VAL_L (b), and VAL_N (c) (right)

In Fig. 3, the spatial layout of the four values (VAL_C, VAL_N, VAL_R, and VAL_L) is provided; for each value, null and non-null occurrences are differentiated. Furthermore, in each frame, the protected areas' boundaries are also shown, so as to qualitatively appreciate differences in each value's occurrences within and outside protected areas. For instance, VAL_N's null occurrences can generally be found outside protected areas; this also applies to VAL_C, but, contrary to the previous case, null occurrences largely prevail over non-null ones.

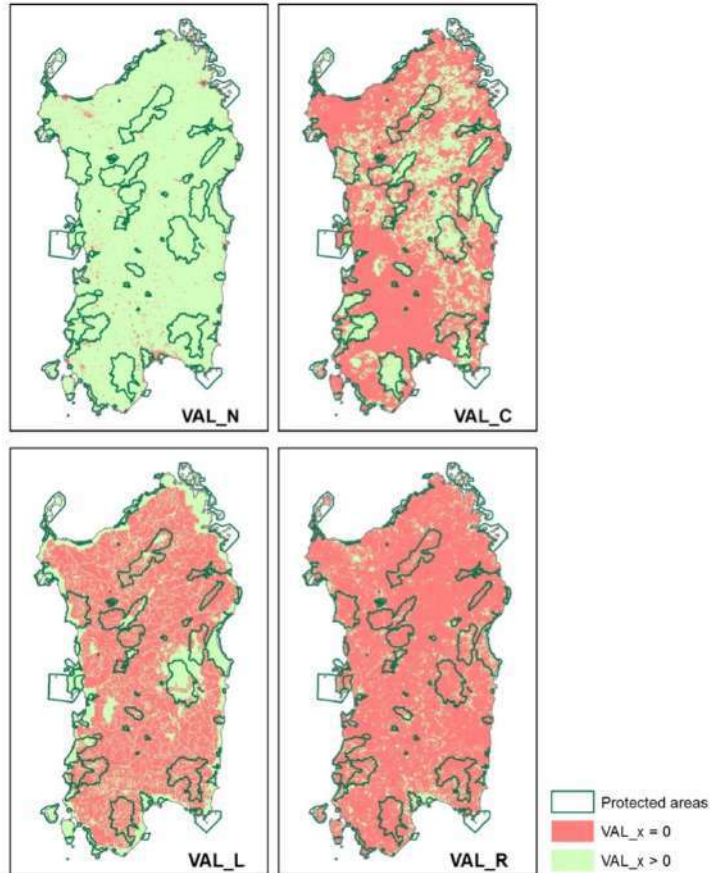


Fig. 3 - Spatial distribution of VAL_N, VAL_C, VAL_L and VAL_R showing patches having null and non-null values

Table 2 shows the quantitative results of the analysis, grouped into the two macro-categories of natural protected areas and unprotected areas (first column); for each, the results are further grouped according to VAL_T tertiles (second column). Next, let us denote VAL_x as any of the four values (i.e., VAL_C, VAL_N, VAL_R, or VAL_L): in the third column, for each macro-category and for each tertile, some descriptive indicators are provided: VAL_x's mean value, median and standard deviation; number of patches taking the null value of VAL_x together with the percentage of patches with reference to the total number of patches belonging to the corresponding macro-category and tertile; total area of patches taking the null value of VAL_x together with the percentage of the area taking the null value of VAL_x with reference to the total area included within the corresponding macro-category and tertile.

Tab. 2 - Mean value, median, standard deviation, number and total area of patches with null value, percentage of the number and of the total area of patches with null value in relation to, respectively, the total number and total area of patches in the reference tertile, for both natural protected areas and unprotected areas and for each of the four values

		VAL_C	VAL_N	VAL_R	VAL_L
<i>Natural protected areas (467,635.13 ha)</i>					
1st tertile: VAL_T = [0–1] (94,150.93 ha)	mean	0.13	0.55	0.002	0.11
	median	0.00	0.50	0.00	0.00
	standard deviation	0.17	0.33	0.01	0.31
	no. patches VAL_x = 0	17,366	4526	23,944	24,401
	% patches VAL_x = 0 ¹	63.34	16.51	87.34	89.01
	total area VAL_x = 0 [ha]	87,332.79	2063.00	89,766.74	93,097.17
	% area VAL_x = 0 ²	92.76	2.19	95.34	98.88
2nd tertile: VAL_T = [1–1.57] (148,548.90 ha)	mean	0.25	0.47	0.017	0.57
	median	0.29	0.50	0.01	1.00
	standard deviation	0.21	0.44	0.04	0.49
	no. patches VAL_x = 0	16,661	20,482	24,064	20,825
	% patches VAL_x = 0 ¹	33.99	41.78	49.09	42.48
	total area VAL_x = 0 [ha]	30,961.17	3244.88	123,262.52	120,388.14
	% area VAL_x = 0 ²	20.84	2.18	82.98	81.04
3rd tertile: VAL_T = [1.57–3.53] (224,935.30 ha)	mean	0.34	0.89	0.024	0.95
	median	0.36	1.00	0.00	1.00
	standard deviation	0.24	0.23	0.07	0.18
	no. patches VAL_x = 0	21,452	2102	44,796	2741
	% patches VAL_x = 0 ¹	24.41	2.39	50.98	3.12
	total area VAL_x = 0 [ha]	45,805.20	509.24	160,293.70	9970.11
	% area VAL_x = 0 ²	20.36	0.23	71.26	4.43

<i>Unprotected areas (1,940,665.60 ha)</i>					
1st tertile: VAL_T = [0–1] (1,015,579.00 ha)	mean	0.08	0.53	0.005	0.05
	median	0.00	0.50	0.00	0.00
	standard deviation	0.15	0.29	0.02	0.21
	no. patches VAL_x = 0	132,144	22,824	129,865	157,793
	% patches VAL_x = 0 ¹	79.62	13.75	78.25	95.08
	total area VAL_x = 0 [ha]	963,608.81	50,825.56	940,178.56	999,186.97
	% area VAL_x = 0 ²	94.88	5.00	92.58	98.39
2nd tertile: VAL_T = [1– 1.57] (563,063.30 ha)	mean	0.15	0.60	0.012	0.61
	median	0.00	0.50	0.00	1.00
	standard deviation	0.21	0.33	0.04	0.48
	no. patches VAL_x = 0	73,136	15,193	67,584	43,224
	% patches VAL_x = 0 ¹	64.27	13.35	59.39	37.98
	total area VAL_x = 0 [ha]	271,474.10	21,355.85	448,720.03	328,386.09
	% area VAL_x = 0 ²	48.21	3.79	79.69	58.32
3rd tertile: VAL_T = [1.57– 3.53] (362,023.30 ha)	mean	0.24	0.86	0.019	0.96
	median	0.29	1.00	0.00	1.00
	standard deviation	0.23	0.23	0.08	0.16
	no. patches VAL_x = 0	40,890	868	64,398	2338
	% patches VAL_x = 0 ¹	43.43	0.92	68.41	2.48
	total area VAL_x = 0 [ha]	198,254.15	1134.46	305,528.38	17,732.95
	% area VAL_x = 0 ²	54.76	0.31	84.39	4.90

¹ percentage of patches with VAL_x = 0 with respect to the total number of patches in the corresponding tertile. ² percentage of areas with VAL_x = 0 with respect to total area included in the corresponding tertile. VAL_x = (VAL_C, VAL_N, VAL_R, VAL_L).

4. Discussion

In Section 2 above it is highlighted that this study aims at identifying spatial planning policies to improve environmental quality in Sardinia by increasing the size of the regional GI. Such policies primarily target patches taking null values in terms of VAL_T, therefore, from the multifunctionality standpoint, this refers to areas that do not perform any of the functions implied by the four values. As a consequence, planning recommendations provided in the following paragraphs ultimately aim at achieving multifunctionality.

The outcomes of this study show evidence that VAL_N takes rather high average values, both in the case of protected and unprotected areas, with reference to the third tertile of the total value. Moreover, VAL_N takes comparatively lower average values with regards to the first and the second tertiles (0.55 and 0.47 respectively in case of protected areas, and 0.53 and 0.60 in the other case). In all three tertiles, the sum of the areas of patches showing null values for VAL_N is relatively small, both in the case of protected and unprotected areas, since it never exceeds 5%.

That being said, in terms of spatial policies aimed at strengthening the eligibility of areal units to be part of the Sardinian regional GI, the taxonomy of VAL_N suggests that two types of plan actions should be taken into account as particularly effective, both in the case of protected and unprotected areas. The most important of these is related to patches showing non-null values, especially in case they belong to the first or second tertiles of the total value distribution. In these tertiles, the mean and median values of these patches are in the range 0.4–0.6, and they are quite similar to each other in the case of protected and unprotected areas; standard deviations are also quite similar. As a consequence, they entail plenty of room for improvement. Indeed, two variables should be targeted in effective spatial policies: 1) the reduction of threats, which, for instance, can be implemented through the renaturation of soils sealed as a consequence of urbanization, the removal of illegal (and legal) waste disposal sites, the regeneration of undergrowth, monitoring pasture and grazing land condition, and moving industrial facilities which generate dangerous environmental impacts (as, for instance, in the Cagliari case mentioned in Section 3, and mapped in Figure 2C); and 2) the mitigation of land-taking processes and of land cover transitions characterized by qualitative degradation (LAI ET AL., 2017a; 2017b); indeed, it must be taken into account that the most outstanding issue which influences VAL_N is the quality of land cover.

The implications concerning VAL_C are quite different. The mean and median values of patches of protected areas concerning the three tertiles are

significantly higher than the corresponding values of unprotected areas (except for the median value in the first tertile, which equals 0 in both cases); this comparison is made robust by the similar values concerning the dispersion of the distribution, as highlighted by the standard deviations.

Values are generally very low with regards to the first tertile, since, in both cases, the share of patches which show null values is over 90% of the total area. With regards to the second and third tertiles, the share of the area of null-value patches of protected areas is quite lower than in the case of the first tertile (around 20%). This occurs in the case of unprotected areas as well, even though the share of the null-value area is more than double.

The most outstanding policy recommendation aimed at increasing the eligibility of patches to be included in the regional GI is that the environmental protection regime related to habitats and species should be extended beyond the boundaries of the Natura 2000 sites (as, for instance, in the Bosa area in Section 3, mapped in Figure 2A), since conservation measures concerning Natura 2000 sites are already in force in these areas. Moreover, it has to be stressed that the total surface of unprotected areas is about fourfold the surface of protected areas, which confirms that planning and normative efforts should be concentrated on additional measures to identify and protect habitats and species, in order to increase the eligibility of patches to be included in the regional GI.

The taxonomy of VAL_L shows different features as well. The area of the null value patches belonging to the third tertile is very low both in case of protected and unprotected areas, and, consistently, the area of the non-null value patches is high. The area of the non-null patches within the second tertile goes down, dramatically and consistently in both cases, even though the share of the area of null-value patches located in protected areas is higher than in the case of unprotected areas, which implies that the number of landscape assets located in unprotected areas is relatively higher than in the case of protected areas. Finally, VAL_L is close to zero in protected and unprotected areas belonging to the first tertile.

Policy planning implications concerning VAL_L are quite straightforward. Planning measures with regards to protected and unprotected areas should aim to analytically and extensively identify the landscape assets related to historic and cultural resources (as, for instance, in the Giara area in Section 3, mapped in Figure 2B, whose prehistoric remains might not be fully explored), and to the environmental framework.

This is a fine-tuning operation entailed by the co-planning procedure concerning the definition and the adoption of municipal masterplans, which involves the national Ministry of cultural goods and activities and of tourism,

the Sardinian regional administration, and the local municipalities. Moreover, the identification of a GI can benefit not only environmental resources, but also social and cultural resources, as exemplified by Orantes et al. (2017) who develop a methodology to implement a GI plan, based on the integration of social and cultural assets, in the case of Yesan, Korea.

Finally, with reference to VAL_R, the share of the area of the null-value patches of protected and unprotected areas is higher than 70%, irrespective of the tertile. The values related to protected areas within the second tertile are comparatively higher than the other case, whereas the opposite holds for the third tertile.

A possible explanation, in the case of the second tertile, is that the outcome is likely to depend on the different environmental protection regimes in force, which make unprotected areas comparatively more accessible, and, for this reason, it is easier for tourists to post images concerning unprotected areas. However, the low accessibility effect can be more than compensated by the attractive features of protected areas within the third tertile, characterized by the highest environmental and landscape quality, which might explain why the number of images posted from these areas is comparatively larger.

Various studies (AMOAKO-TUFFOUR ET AL., 2012; HEAGNEY ET AL., 2018; FONT, 2000) demonstrate that recreational attractiveness, conceived as recreation demand, is influenced by different site attributes, such as accessibility and presence of accommodation options. Heagney et al. (2018), by exploring the influence of several site attributes on recreational demand in relation to 728 protected areas, located in the state of New South Wales, Australia, indicate that accessibility represents a value added that needs to be assessed in terms of recreational potential from the early stages of the site establishment-related planning process, although the establishment of any protected area entails a base level of recreational demand due to visitors' expectations of the existing site values.

5. Conclusions

This study evaluates the suitability of areas, inside and outside protected areas, to be included in a regional GI, identified through four values (conservation value, natural value, recreational value and landscape value). In particular, this methodology attempts to operationalize multifunctionality, one of the two key concepts that characterize GI, and to derive planning recommendations that, by increasing the values of each factor, and hence the

total value, focus on the multiple functions implied by the factors in order to increase the eligibility of null patches to belong to the regional GI.

The first advantage of the proposed methodology is that it shows a certain degree of flexibility which can be easily used to analyze other Italian and European regional contexts, since the Natura 2000 Network spreads all over the European union countries, under the provisions of the Habitats and Birds Directives, and Natura 2000 sites are identified and described in the Standard data forms, as stated by the Decision no. 2011/484/EU of 11 July 2011. The other protection regimes that the study takes into account are easily comparable to the European union's regimes, even though the national contexts show differentiated institutional frameworks. Moreover, the flexibility of the methodology makes it possible to add new values for obtaining the total value, in relation to the normative, social and economic characteristics of other national contexts. A very interesting aspect with regards to comparative studies concerning European countries is the definition of recommendations related to planning policies, with reference to both analogies and differences, and to public institutions and bodies involved in the implementation of these policies. Second, the proposed methodology uses data, such as land cover/land uses maps or data from social media, that are readily available.

On the other hand, the study shows some limitations that should be addressed in future research. First, the issue of leisure and tourist attractiveness needs further specific insights and represents a promising field for further study, since the recreational value is rather volatile and its measures are questionable. Integrating the judgments of non-experts, such as citizens and local communities, could be a possible future research direction in order to obtain social-perceptual information on cultural and recreational services, by building upon works such as Rall et al. (2018) who study the added value generated by public participation on GI, in particular in relation to cultural and recreational services. Second, there is room for improvement in the way the total value is here calculated. As in the first case, non-expert judgments could be embedded in the definition of the total value, which, in the present version, is calculated as a sum of the four values. Future research could consider calculating the total value as a weighted sum, where the specific weights of each single value are defined through a combination of judgments from both experts and non-experts. It is expected that, by including non-expert opinions such as those from local communities, weights would be location-specific and time-specific.

References

- AMOAKO-TUFFOUR J. e MARTINEZ-ESPINEIRA R. (2012), “Leisure and the net opportunity cost of travel time in recreation demand analysis: An application to Gros Morne national park”, *Journal of Applied Economics*, vol. 15, pp. 25-49.
- ARCIDIACONO A., RONCHI S. e SALATA, S. (2016) “Managing multiple ecosystem services for landscape conservation: A green infrastructure in Lombardy Region” *Procedia Engineering*, vol. 161, pp. 2297-2303.
- BLAKE E. (1998), “Sardinia’s nuraghi: Four millennia of becoming”, *World Archaeology*, vol. 30, n. 1, pp. 59-71.
- BURKHARD B., KROLL F., MÜLLER F. e WINDHORST W. (2009), “Landscapes’ capacities to provide ecosystem services-A concept for land-cover based assessments”, *Landscape Online*, vol. 15, pp. 1-22.
- BURKHARD B., KROLL F., NEDKOV S. e MÜLLER F. (2012), “Mapping ecosystem service supply, demand and budgets”, *Ecological Indicators*, vol. 21, pp. 17-29.
- CRITERIA, TEMI (2014a), *Monitoraggio dello Stato di Conservazione degli Habitat e delle Specie di Importanza Comunitaria Presenti nei Siti della Rete Natura 2000 in Sardegna. Definizione della Rete di Monitoraggio. Volume 2: Piano di Monitoraggio degli Habitat e delle Specie Vegetali*, MIMEO, New York, NY, USA.
- CRITERIA, TEMI (2014b), *Monitoraggio dello Stato di Conservazione degli Habitat e delle Specie di Importanza Comunitaria Presenti nei Siti della Rete Natura 2000 in Sardegna. Elaborazione Rapporto di Sintesi sullo Stato di Conservazione di Habitat e Specie (Linea 4, 4.C.1)*, MIMEO, New York, NY, USA.
- CUNHA J., ELLIOTT M. e RAMOS S. (2018), “Linking modelling and empirical data to assess recreation services provided by coastal habitats: The case of NW Portugal”, *Ocean & Coastal Management*, vol. 162, pp. 60-70.
- DE GROOT R.S., ALKEMADE R., BRAAT L., HEIN L. e WILLEMEN L. (2010), “Challenges in integrating the concept of ecosystem services and values in landscape planning, management and decision making”, *Ecological Complexity*, vol. 3, pp. 260-272.
- DE MONTIS A. e CASCHILI S. (2012), “Nuraghes and landscape planning: Coupling viewshed with complex network analysis”, *Landscape Urban Planning*, vol. 105, pp. 315-324.
- FONT A.R. (2000), “Mass tourism and the demand for protected natural areas: A travel cost approach”, *Journal of Environmental Economics and Management*, vol. 39, pp. 97-116.
- HAUSMANN A., TOIVONEN T., SLOTOW R., TENKANEN H., MOILANEN A., HEIKINHEIMO V. e DI MININ E. (2018), “Social media data can be used to understand tourists’ preferences for nature-based experiences in protected

- areas”, *Conservation Letters*, vol. 11, p. e12343.
- HEAGNEY E.C., ROSE J.M., ARDESHIRI A. e KOVAC M. (2018), “Optimising recreation services from protected areas—Understanding the role of natural values, built infrastructure and contextual factors”, *Ecosystem Services*, vol. 31, pp. 358-370.
- LAI S. e LEONE F. (2017), “A methodological approach to identify a multifunctional green infrastructure at the regional scale. A case study from Sardinia, Italy”, *Urbanistica Informazioni*, vol. 272, pp. 836-840.
- LAI S., LEONE F. e ZOPPI C. (2017a), “Land cover changes and environmental protection: A study based on transition matrices concerning Sardinia (Italy)”, *Land Use Policy*, vol. 67, pp. 126-150.
- LAI S., LEONE F. e ZOPPI C. (2017b), “Anthropization processes and protection of the environment: An assessment of land cover changes in Sardinia, Italy”, *Sustainability*, vol. 9, 2174, doi:10.3390/su9122174.
- LANKIA T., KOPPEROINEN L., POUTA E. e NEUVONEN M. (2015), “Valuing recreational ecosystem service flow in Finland”, *Journal of Outdoor Recreation and Tourism*, vol. 10, pp. 14-28.
- MARTÍN-LÓPEZ B., GÓMEZ-BAGGETHUN E., LOMAS P.L. e MONTES C. (2009), “Effects of spatial and temporal scales on cultural services valuation”, *Journal of Environmental Management*, vol. 90, pp. 1050-1059.
- MAYER M. e WOLTERING M. (2018), “Assessing and valuing the recreational ecosystem services of Germany’s national parks using travel cost models”, *Ecosystem Services*, vol. 31, pp. 371-386.
- MILLENNIUM ECOSYSTEM ASSESSMENT (2003), *Ecosystems and human well-being: A framework for assessment*; Island Press, Washington, DC, USA.
- MINCHILLI M., TEDESCHI L.F. (2017), “The geographical distribution of nuraghi in north-western Sardinia: Analysis and evaluation of the influence of anthropic and natural factors”, in GERVAZI O. ET AL. (eds), *Computational Science and Its Applications—ICCSA 2017, Proceedings of the 17th International Conference on Computational Science and Its Applications (ICCSA 2017)*, Trieste, Italy, 3–6 July 2017; Lecture Notes in Computer Sciences Series, Springer, Cham, Switzerland, Volume 10408, pp. 701–712.
- ORANTES M.J.C., KIM J. e KIM J. (2017), “Socio-cultural asset integration for a green infrastructure network plan in Yesan County, Korea”, *Sustainability*, vol. 9, 191.
- POLASKY S., NELSON E., PENNINGTON D. e JOHNSON K.A. (2011), “The impact of land-use change on ecosystem services, biodiversity and returns to landowners: A case study in the state of Minnesota”, *Environmental and Resource Economics*, vol. 48, pp. 219-242.

- RALL E., HANSEN R. e PAULEIT S. (2018), “The added value of public participation GIS (PPGIS) for urban green infrastructure planning”, *Urban Forestry & Urban Greening*, vol. 40, pp. 264-274.
- RENDELI M. (2017), “Sardinia”, in DE NASO A. (ed.), *Etruscology*; Walter de Gruyter GmbH: Berlin, Germany; pp. 1669-1678.
- SALOMAA A., PALONIEMI R., KOTIAHO J.S., KETTUNEN M., APOSTOLOPOULOU E. e CENT J. (2017), “Can green infrastructure help to conserve biodiversity?”, *Environmental Planning C*, vol. 35, pp. 265-288.
- SERKAN G. e REHBER E. (2008), “A travel cost study to estimate recreational value for a bird refuge at Lake Manyas, Turkey”, *Journal of Environmental Management*, vol. 88, pp. 1350-1360.
- SHARMA R., NEHREN U., RAHMAN S.A., MEYER M., RIMAL B., SETA G.A. e BARAL B. (2018), “Modeling land use and land cover changes and their effects on biodiversity in Central Kalimantan, Indonesia”, *Land*, vol. 7, n. 57.
- SONTER L.J., WATSON K.B. WOOD S.A. e RICKETTS T.H. (2016), “Spatial and temporal dynamics and value of nature-based recreation, estimated via social media”, *PLoS ONE*, vol. 11, p. e0162372.
- WEBER T., SLOAN A. e WOLF J. (2006), “Maryland’s Green Infrastructure Assessment: Development of a comprehensive approach to land conservation” *Landscape Urban Planning*, vol. 77, pp. 94-110.
- WOOD S.A., GUERRY A.D., SILVER J.M. e LACAYO M. (2013), “Using social media to quantify nature-based tourism and recreation”, *Scientific Reports Sci.*, vol. 3, p. 2976.
- YANG S., ZHAO W., LIU Y., WANG S., WANG J. e ZHAI R. (2018), “Influence of land use change on the ecosystem service trade-offs in the ecological restoration area: Dynamics and scenarios in the Yanhe watershed, China”, *Science of The Total Environment*, vol. 644, pp. 556-566.
- ZOPPI C. e LAI S. (2010), “Assessment of the Regional Landscape Plan of Sardinia (Italy): A participatory-action-research case study type”, *Land Use Policy*, vol. 27, pp. 690-705.

Author Contributions

Sabrina Lai (S.L.), Federica Leone (F.L.), and Corrado Zoppi (C.Z.) collaboratively designed the research and jointly wrote Sections 1 and 5. Individual contributions are as follows: F.L. wrote Section 2; S.L. wrote Section 3; and C.Z. wrote Section 4.

Funding

This study was supported by the Research Program ‘Natura 2000: Assessment of management plans and definition of ecological corridors as a complex network’, funded by the Autonomous Region of Sardinia for the period 2015–2018, under the Call for ‘Projects related to fundamental or basic research’

of the year 2013, implemented at the Department of Civil and Environmental Engineering and Architecture (DICAAR) of the University of Cagliari, Italy.

Conflicts of Interest

The authors declare no conflict of interest. The founding sponsors had no role in the design of the study; in the collection, analyses, or interpretation of data; in the writing of the manuscript, and in the decision to publish the results.

The book focuses on bioregionalist theories and experiences as an alternative way of reading and designing local contexts, based on the recovery of the co-evolutionary relationship between human settlements and territories to achieve a self-sustainable and non-hierarchical system of urban and rural centers, according to Alberto Magnaghi's vision. The work has developed a broader discussion among researchers from different European backgrounds about the ways in which processes related to bioregionalism, looked at in a transdisciplinary way, can lead to interesting applications and analytical insights, that are useful for reviewing and strengthening community self-organization and reflecting on the constitutive foundations of the relationship between communities and their territories. The collaboration between the French school of Bordeaux, the Tuscany school and the Cagliari school gives back a diversified overview of materials and references for the possible application of the bioregionalist model. The contributions discuss many issues related to the governance of metropolitan areas and the management of the urban-rural relationship with suggestions for interpretation and design in a bioregionalist perspective, the themes of urban green, land vulnerability, and agricultural supply chains in rural and peri-urban spaces and new food economies in metropolitan areas.

Anna Maria Colavitti Full Professor in Urban and Regional Planning at the School of Architecture, University of Cagliari - Department of Civil and Environmental Engineering and Architecture (DICAAR). Her main scientific interests are oriented to historic settlement analysis and interpretation, landscape planning, cultural heritage management and the role cultural and environmental resources, as factors of long-lasting and sustainable local development, play in the urban planning processes. She coordinates several research groups for the design of municipal urban plans and detailed plans for the historic center.

Sergio Serra Architect, Ph.D. in Civil Engineering and Architecture and Research Fellow in Urban and Regional Planning at the DICAAR - University of Cagliari. His main research interests focus on market-oriented approaches in urban planning, landscape and cultural heritage planning, land take control, and urban and territorial regeneration. He is member of some research groups for the design of municipal urban plans and detailed plans for the historic center.

ISBN 978-88-945059-6-2