

Aging promotes neoplastic disease through effects on the tissue microenvironment

Fabio Marongiu^{1*}, Maria Paola Serra^{1*}, Silvia Doratiotto¹, Marcella Sini¹, Maura Fanti¹, Erika Cadoni¹, Monica Serra¹, Ezio Laconi¹

¹Department of Biomedical Sciences, Unit of Experimental Medicine, University of Cagliari, 09124, Cagliari, Italy

* Equal contribution

Correspondence to: Ezio Laconi; email: elaconi@unica.it

Keywords: aging, microenvironment, selection, pre-neoplastic hepatocytes, liver carcinogenesis

Received: August 22, 2016

Accepted: November 23, 2016

Published: December 6, 2016

ABSTRACT

A better understanding of the complex relationship between aging and cancer will provide important tools for the prevention and treatment of neoplasia. In these studies, the hypothesis was tested that aging may fuel carcinogenesis via alterations imposed in the tissue microenvironment. Preneoplastic hepatocytes isolated from liver nodules were orthotopically injected into either young or old syngeneic rats and their fate was followed over time using the dipeptidyl-peptidase type IV (DPPIV) system to track donor-derived-cells. At 3 months post-Tx, the mean size of donor-derived clusters was 11 ± 3 cells in young vs. 42 ± 8 in old recipients. At 8 months post-Tx, no visible lesion were detected in any of 21 young recipients, while 17/18 animals transplanted at old age displayed hepatic nodules, including 7 large tumors. All tumors expressed the DPPIV marker enzyme, indicating that they originated from transplanted cells. Expression of senescence-associated β -galactosidase was common in liver of 18-month old animals, while it was a rare finding in young controls. Finally, both mRNA and IL6 protein were found to be increased in the liver of aged rats compared to young controls. These results are interpreted to indicate that the microenvironment of the aged liver promotes the growth of pre-neoplastic hepatocytes.

INTRODUCTION

Aging is the strongest risk factor for neoplastic disease. However, the mechanistic links between these two complex biological processes are far from being fully elucidated. A time-dependent, progressive accumulation of critical mutagenic events in rare cells and/or failure to clear putative pre-neoplastic cells due to a decline in immune-surveillance are among the most considered hypothesis to relate aging and cancer [1-2]. On the other hand, there is now general consensus on the notion that the emergence of pre-neoplastic and neoplastic cell populations is heavily dependent on biological cues emanating from the host tissue microenvironment in which cancer arises [3,7]. Along these lines, we have observed that the imposition of a long-lasting constraint on the regenerative capacity of the liver is conducive to the rapid growth and progression of transplanted pre-neoplastic hepatocytes, while the same cells remain

quiescent when injected into a normal, untreated host liver [8]. These results suggested that loss of regenerative potential in tissues where this property is functionally relevant may generate a biological driving force fostering the selective outgrowth of putative altered cells [4,9]. Since a reduced regenerative potential in several organs, including liver, is also a hallmark of aging [10,11], it is reasonable to hypothesize that alterations induced by the aging process might be similarly associated to the emergence of a neoplastic-prone tissue landscape, which would contribute to the increased frequency of cancer observed with advancing age [9]. Based on these premises, the present studies were undertaken to investigate the fate of pre-neoplastic hepatocytes isolated from rat liver nodules and orthotopically transplanted into syngeneic recipients of different age. The results indicate that the microenvironment of the aged host supports the growth and progression of pre-neoplastic hepatocytes; by

contrast, no such expansion of transplanted cells was seen in the liver of young recipients.

RESULTS

Size of nodular cell clusters in young and old recipients

In a first study, we examined the size distribution of cell clusters originating from nodular hepatocytes transplanted in either young or old recipient livers and analyzed at 3 months post-Tx. Panel A in Figure 1 shows

the average number of cells per cluster in each animal. In rats transplanted at 4 months of age, the highest mean size of clusters per animal was 21 ± 3 , while the largest single cluster comprised 27 cells. By contrast, the same figures were much higher in the group transplanted at 18 months of age, being 81 ± 29 and 563 cells, respectively. This finding was confirmed when the mean size of clusters was compared in the two groups (6 animals each, panel B in Figure 1): 11 ± 3 cells per cluster were detected in young recipients, while this value was 42 ± 8 in animals transplanted at 18 months of age.

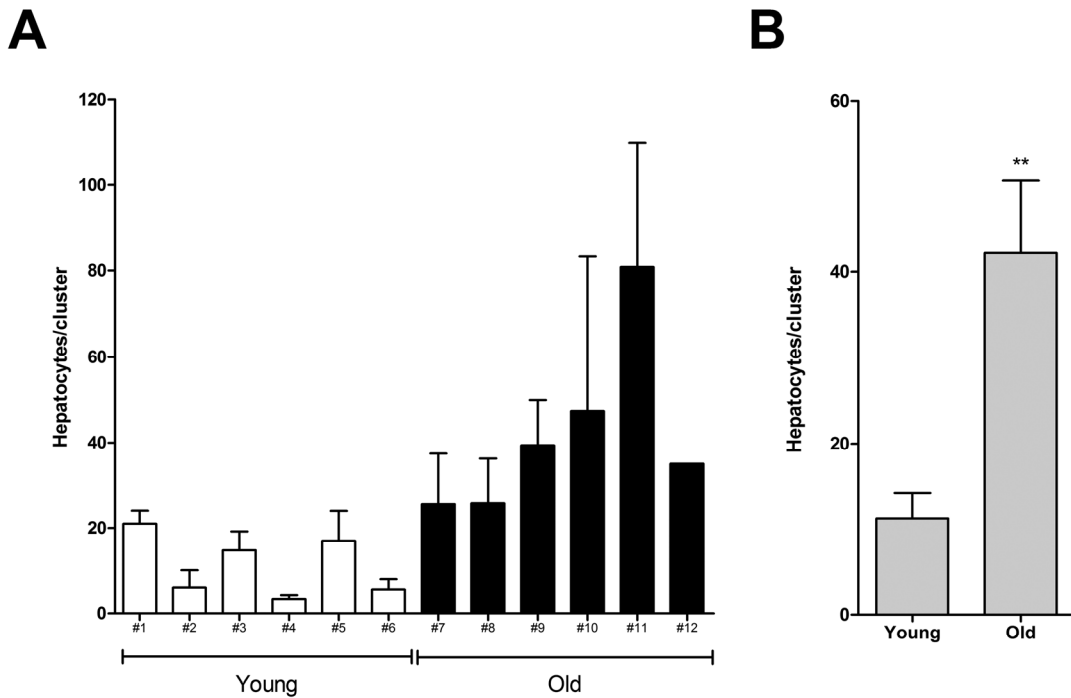


Figure 1. Size of donor-derived, pre-neoplastic hepatocyte clusters in animals transplanted at young or old age and killed 3 months after Tx (see Experimental procedures for details). Panel (A) mean cluster size (\pm SE) in individual animals. Panel (B) mean cluster size per group. Data are mean \pm SE; **significantly different from young group: $P < 0.01$.

Table 1. Incidence of hepatic lesions in animal transplanted with primary pre-neoplastic hepatocytes at young or old age.

Age at Tx (months)	Animals with lesions	Total No. of Nodules (<1cm)	Size Range	Total No. of Tumors (>1cm)	Size Range
3-5	0/21	none	—	none	—
18-20	17/18	56	1-8 mm	7	1-3 cm

The growth of hepatocyte nodules in young and old recipients

In a second series of experiments, young (3-5 months old) and aged (18-20 months old) Fischer rats were similarly transplanted with nodular hepatocytes and killed 8 months later. On macroscopic examination (Table 1), no visible lesion were seen in any of 21 recipient animals transplanted at young age (Figure 2, panel A). In stark contrast, 17/18 animals transplanted at old age displayed visible hepatic nodules, ranging from 1 to 8 mm in size, and including 7 larger tumors

measuring up to 3 cm in diameter (Figure 2, panel B). All large lesions expressed the DPPIV marker enzyme, indicating that they originated from the transplanted cell population (Figure 3, panels A-C). Their gross appearance and structural morphology was similar to that of primary hepatocyte nodules generated through classical protocols for the induction of carcinogenesis in rat liver [16]. They were generally paler in color compared to surrounding tissue, displayed a prominent vasculature and were composed of two-three cell-thick hepatocyte plates (Figure 3, panel D).

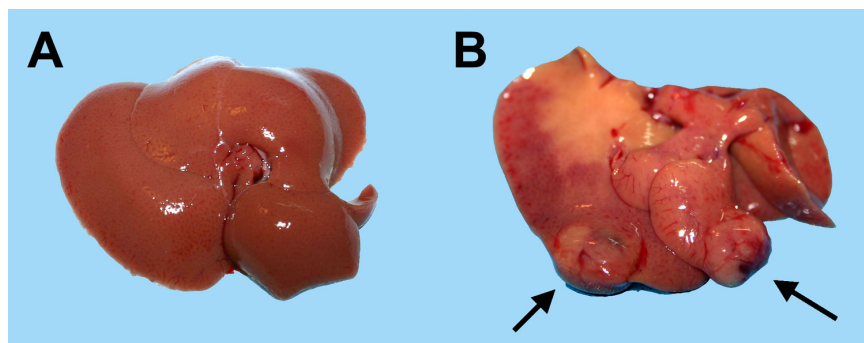


Figure 2. Macroscopic appearance of livers from animals transplanted with pre-neoplastic hepatocytes in at young or old age and killed 8 months after Tx. Panel (A) liver from a rat transplanted at 5 months of age and killed 8 months later: liver surface is regularly smooth and no lesions were detected. Panel (B) liver from a rat transplanted at 20 months of age and killed 8 months later: note the presence of two large nodules with prominent vasculature (arrows).

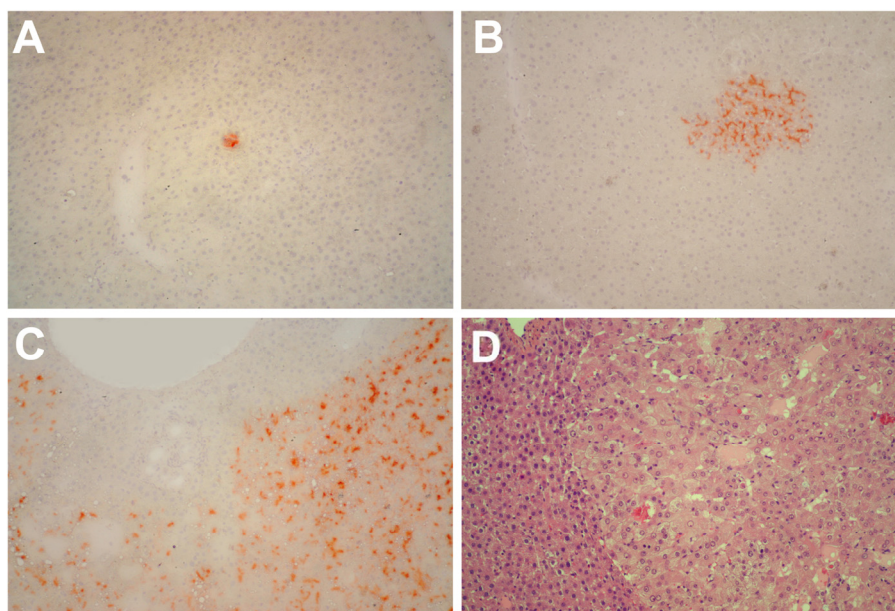


Figure 3. Panels (A) and (B) Histochemical staining for DPPIV of liver samples obtained from rats transplanted with pre-neoplastic hepatocytes at young age and killed 8 months after Tx. Small clusters of DPPIV-expressing hepatocytes (orange-rust) were discerned in all animals. Histochemical staining for DPPIV (panel C) and standard H&E staining (panel D) of a large hepatic nodule from a rat transplanted with pre-neoplastic hepatocytes at old age and killed 8 months later. Note the typical appearance of nodular hepatocytes arranged in multiple cell-thick plates. Magnification: 100x.

Markers of cell senescence in aged rat liver

In order to identify alterations in the tissue microenvironment possibly relevant to the growth of transplanted cells in the aged liver, expression of markers of cell senescence was investigated. Cell senescence has long been interpreted as a fail-safe mechanism to limit neoplastic progression of altered cells [12]. On the other hand, it is now well established that it can also contribute to the emergence of the neoplastic phenotype, possibly through secretion of a host of factors, variably referred to as senescence-associated secretory phenotype (SASP) [13] or senescence-messaging secretome (SMS) [14], and comprising cytokines, growth factors and proteases. In light of the results reported above, expression of SA- β -gal, one of the most consistent markers of cell senescence, was determined in the liver of young vs. aged rats. Typical results are shown in Figure 4. Diffuse histochemical staining for SA- β -gal was observed in liver sections obtained from 18-month old animals, while it was a rare finding in the corresponding samples from young controls.

On the other hand, no significant changes were seen between young and aged animals in the hepatic expression of other markers that have been associated with cell senescence, such as the cell cycle inhibitors p21 and p27; however, aged livers displayed higher levels of p53, a central player in growth arrest following DNA damage [15].

We next measured the levels of expression of IL6, a pro-inflammatory cytokine and a main component of SASP which has also been implicated in liver regeneration and repair [16]. Interestingly, both mRNA and IL6 protein were found to be increased in the liver of aged rats compared to young controls (Figure 5). In light of these results, we further investigated expression of the downstream effector of IL6, signal transducer and activator of transcription 3 (STAT3) in the liver of aged animals transplanted with nodular hepatocytes. However, only rare cells, scattered throughout the liver, showed nuclear staining for STAT3, with no specificity for clusters of donor-derived nodular cells.

DISCUSSION

A better understanding of the bases of the intimate association between aging and cancer is likely to widen our opportunities to devise more effective approaches for the prevention and treatment of neoplastic disease. In order to unravel the intricacies of such complex relationship, biological coordinates need to be first firmly established. The results of these studies provide a contribution to this end, indicating that alterations in the tissue microenvironment of the aged rat liver can foster the growth of transplanted pre-neoplastic hepatocytes. They can therefore account, at least in part, for the increased risk of neoplastic disease associated with aging.

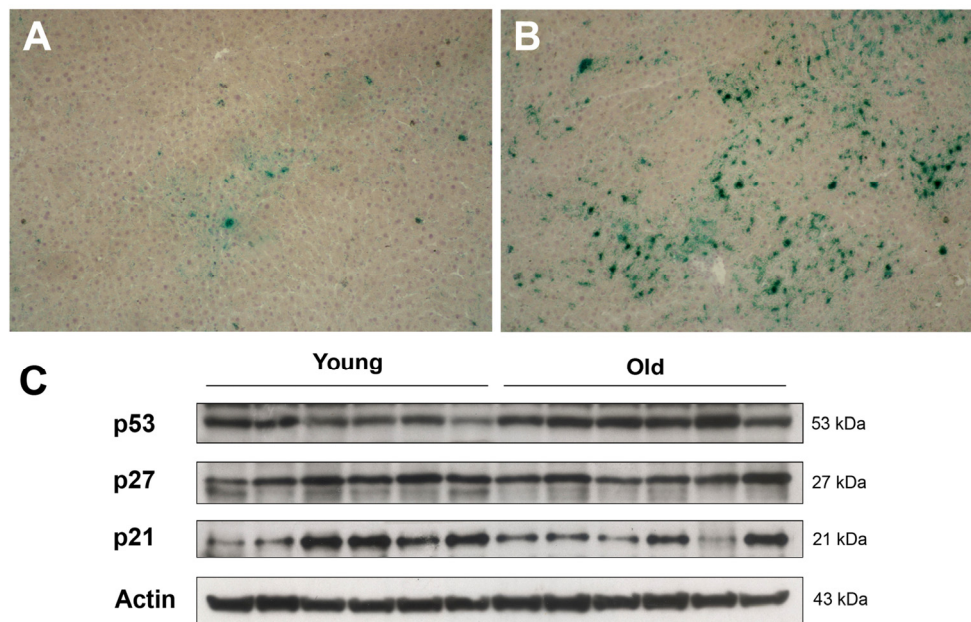


Figure 4. Panels (A) and (B) Expression of SA- β -gal in the liver of animals transplanted with pre-neoplastic hepatocytes in at young or old age and killed 3 months after Tx. The senescence marker was diffusely expressed in aged animals (panel B), while it was a rare finding in liver samples from young rats (panel A). Panel (C) Western Blot analysis of p21, p27 and p53 in liver samples from young and old recipients.

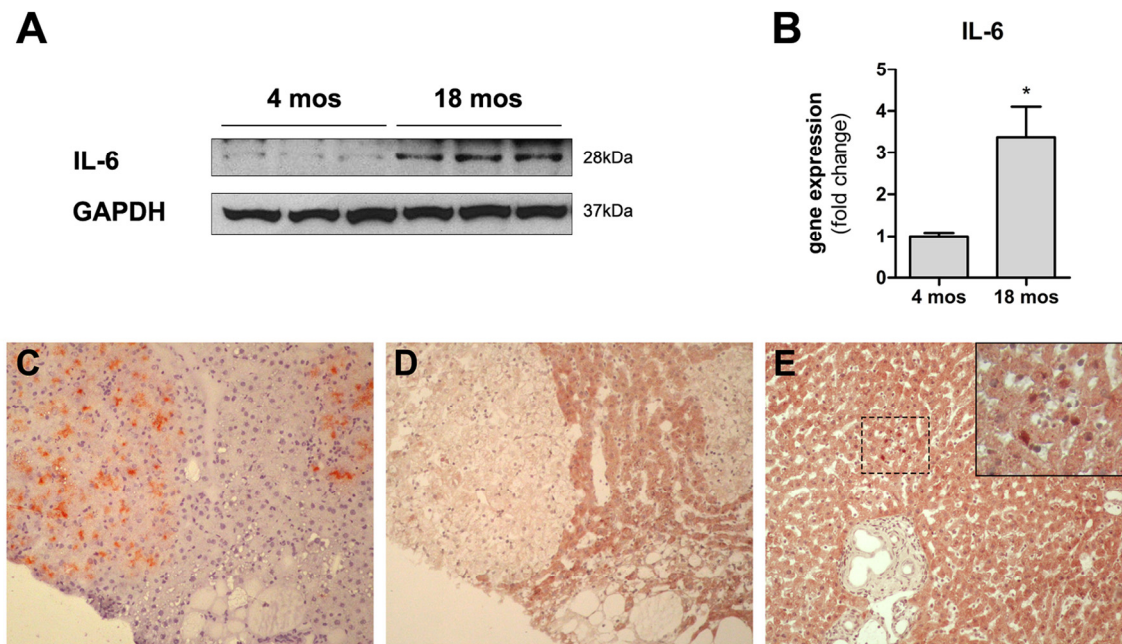


Figure 5. Panels (A) and (B) Expression of IL6 in the liver of animals transplanted with pre-neoplastic hepatocytes in at young or old age and killed 3 months after Tx. Both the protein (panel A) and the corresponding mRNA (panel B) were expressed at higher levels in the liver of aged animals. Panels (C) and (D) serial sections showing histochemical staining for DPPiV⁺ (panel C) and immuno-histochemical staining for STAT3 (panel D) in clusters of transplanted nodular hepatocytes. Only rare STAT3⁺ nuclei were detected in the aged rat liver (panel E). 100x magnification.

Primary pre-neoplastic hepatocytes were isolated from hepatic nodules generated according to a classical experimental model of chemical carcinogenesis [13,17]. They were then transferred into either young or old syngeneic hosts and their fate was followed over time for up to 8 months post-infusion, using the established DPPiV enzyme system as a tag [8,12].

The first finding to be highlighted is the very limited growth of transplanted cells seen in the liver of young recipients at either 3 or 8 months after Tx. Incidentally, we have now extended this observation to 12 months post-Tx, with similar results (data not presented). This indicates that the transplanted pre-neoplastic cell population is not endowed with any inherent degree of growth autonomy. Rather, its selective focal expansion appears to be heavily dependent on cues emanating from the tissue microenvironment, consistent with our earlier observations [8].

By contrast, the same cell population was able to grow and generate focal proliferative lesions, including large hepatocyte nodules, upon transplantation into the liver of aged animals, indicating that the microenvironment of the aged liver provides a promoting soil for the seeded

pre-neoplastic cells isolated from a syngeneic donor. In more general terms, these results support the conclusion that aging is associated with the emergence of a neoplastic-prone tissue landscape, which is likely to represent a key biological driving force to explain the increased incidence of cancer with advancing age. To our knowledge, this is the first study reporting on the fate of a primary pre-neoplastic cell population orthotopically transplanted in normal, untreated recipient animals of different age.

Our findings are reminiscent of those of McCullough et al. [17,18], who reported on the age-dependent regulation of the tumorigenic potential of neoplastically transformed rat liver epithelial cells by the liver microenvironment. However, those studies and ours differ in important experimental details, which impact on the interpretation and significance of results. Firstly, a rat liver epithelial cell line, grown *in vitro*, was employed by McCullough et al., while freshly isolated primary hepatocytes were used in the present investigation, with no *in vitro* passage. Secondly, the cell line in McCullough's studies was already neoplastic, with a full tumorigenic potential and a biological behaviour *in vivo*, which is difficult to predict

and interpret. By contrast, cells isolated from hepatic nodules were pre-neoplastic, with no signs of growth autonomy. Furthermore, their biology has been extensively characterized: if left in the original host, they will progress to overt hepatocellular carcinoma in approximately 6 months from the time of isolation [19]. Overall, a continuity of the *in vivo* neoplastic process was maintained in the present experimental setup between the original host (the donor) and the recipient. Thus, our findings bear direct relevance to the pathogenesis of neoplastic disease as it occurs *in vivo* in experimental animals and in humans.

Important insights can be drawn from these results regarding the biological mechanisms mediating the effects of aging on carcinogenesis. A most entertained hypothesis places emphasis on the time-driven progressive accumulation of mutagenic events in rare cells that ultimately would lead to the acquisition of a neoplastic phenotype [1,20]. While our results are not at odds with this postulation, they do rule out the possibility that such mechanism is acting alone and/or it is of major biological relevance. In fact, the presence of altered, pre-neoplastic hepatocytes in the liver of young recipients does not result in any significant growth of focal lesions for several months post-transplantation, suggesting that it not sufficient, *per se*, to fuel carcinogenesis.

Another possibility that is often invoked to relate aging and cancer pertains to a gradual waning of the immune surveillance mechanisms in old age, such that altered/pre-neoplastic/neoplastic cells are no longer targeted for clearance and can therefore expand unchecked in the host [2,21,22]. Our present results would appear compatible with such scenario. However, we consider it unlikely for the following reasons. Firstly, donor and recipient animals are syngeneic and transplanted pre-neoplastic cells are still present in young host livers several months after transplantation, indicating that they are not cleared by the immune system. Secondly, we have obtained similar findings with normal hepatocyte transplantation [23], indicating that the microenvironment of the aged rat liver is more permissive for the growth of both pre-neoplastic and normal homotypic cells, which are not expected to be a target for clearance by the immune system in a syngeneic setting.

Over the last several years, cell senescence has taken centre stage for its possible involvement as a pro-carcinogenic stimulus. This concept has been specifically linked to the peculiar secretory phenotype of senescent cells, SASP, which includes cytokines, proteases and growth factors, among others, and can profoundly impact the biological response of the

surrounding tissue [13,14,24-27]. Indeed, we found that incidence of cell senescence, as monitored by the expression of SA- β -gal, is increased in aged rat liver. Furthermore, levels of IL6, a pro-inflammatory cytokine and a major component of SASP which is also involved in liver regeneration and repair [16], were also higher in the liver of older animals. It is therefore reasonable to hypothesize that the presence of cell senescence and the accompanying SASP may mediate, at least in part, the observed promoting effect of the aged liver microenvironment on the growth of transplanted pre-neoplastic hepatocytes. Consistent with this postulation, we have previously shown that clearance of senescent cells delays carcinogenesis in a rat liver model [24].

However, other complementary mechanisms, such as cell competition [28-30], cannot be ruled out. The declining fitness of liver parenchyma with age, including a cell-autonomous decrease in proliferative potential [31], may well contribute to the selective emergence of altered cells [32], as it has been proposed in bone marrow during leukemogenesis [33,34,35]. Interestingly, it was recently reported that chronic inflammation associated with old age contributes to a reduced fitness of B cell progenitor populations, favoring the selection for cells harboring oncogenic mutations [36].

Irrespective of the specific mechanisms, our findings highlight an important role an age-associated altered tissue microenvironment in selecting for the emergence of pre-neoplastic cell populations. The finding of a direct pathogenetic link between aging and carcinogenesis reinforces the notion that similar strategies may help delaying both processes [37].

MATERIALS AND METHODS

Animals

All animals were maintained on daily cycles of alternating 12 h light/darkness with food and water available *ad libitum*. They were fed Purina Rodent Lab Chow diet (Ditta Mucedola, Italy) throughout the experiments and received humane care according to the criteria outlined in the National Institutes of Health Publication 86-23, revised 1985. Animal studies were reviewed and approved by the Institutional Animal Care and Use Committee of the University of Cagliari. In order to distinguish donor-derived from recipient cells in the liver, the dipeptidyl-peptidase type IV-deficient (DPPIV-) rat model was used [38]. A colony of DPPIV-F344 rats has been established in our laboratory, at the Department of Biomedical Sciences, University of Cagliari. DPPIV⁻ animals were used as recipients, while

donor rats were syngeneic F344, DPPIV⁺ and were purchased from Charles River, Milan, Italy.

Induction of liver nodules in donor rats and isolation of hepatocytes

Hepatocyte nodules were induced according to a well-characterized experimental model in the rat [19], as previously described [8]. Briefly, two-month old male Fischer 344 rats, expressing DPPIV enzyme activity, were injected with a single dose of diethylnitrosamine (DENA, 200 mg/kg b.w., i.p., Sigma-Aldrich Chemical Co., St. Louis, MO) followed, 3 weeks later, by exposure to a modified version of the Solt and Farber protocol [39], to stimulate the growth of hepatocyte foci and nodules. Such protocol consisted of three consecutive daily doses of 2-acetylaminofluorene (20 mg/kg b.w., given by gavage tube, from Sigma-Aldrich) followed, on the fourth day, by a single administration of CCl₄ (0.2 ml/kg b.w., by gavage, mixed in corn oil, 1:1 v:v). Six months after the initial treatment livers were perfused according to a standard 2-step collagenase perfusion technique [40,41]. Typically, 3 to 5 large (5-10mm in size) persistent nodules are present in the liver at this time point using the above experimental protocol. When left in situ, a subgroup of these nodules (an average of 1 or 2 per animal), will progress to cancer within about 1 year [19]. Large (>5 mm) nodules were physically separated from surrounding tissue and isolated cells were suspended in PBS and prepared for transplantation experiments. Prior to transplantation, cell suspension was filtered through a nylon mesh with a pore diameter of 100µ, in order to eliminate any large cell clumps. Cell viability, determined by trypan blue dye exclusion, was ~85% in the nodular cell preparation.

Hepatocyte transplantation

Young (3-5 months old) or aged (18-20 months old) Fisher 344 rats of the DPPIV⁻ strain were used as recipients. They were injected with 5x10⁵ cells freshly isolated from DPPIV⁺ hepatocyte nodules, via a mesenteric vein [8]. Animals from various groups were sacrificed at different time points during the experiment, as indicated in the Results section. Liver samples were fixed in 10% buffered formaldehyde or snap frozen. Histochemical determination of DPPIV enzyme activity was performed as described [8]. At least ten random sections were cut from each liver lobe of each animal and stained for DPPIV enzyme activity. Sections were then analyzed under the microscope and the number of hepatocytes for each DPPIV⁺ cluster was evaluated. Data from two separate experiments are reported. Data represent means±S.E. Statistical analysis was performed using the Student t test.

Staining for senescence associated β-galactosidase activity

Detection of senescence associated β-galactosidase (SA-β-Gal) activity was performed as described [42]. Immediately before staining, X-Gal stock solution was prepared by dissolving 20mg/ml X-Gal (Invitrogen, Carlsbed, CA) in dimethylformamide. SA-β-Gal staining solution was prepared as follows: 1 mg/ml of X-Gal stock solution were dissolved in 40 mM citric acid in sodium phosphate, pH 6.0/5 mM potassium ferrocyanide/5 mM potassium ferricyanide/150 mM NaCl/2 mM MgCl₂. Frozen sections of 10-µm thickness were fixed for 5' in 4% formaldehyde/0.5% glutaraldehyde at 4°C, washed in PBS and incubated in fresh SA-β-Gal staining solution for 16h at 37°C. No special blocking step is required to perform the staining. Sections were counterstained with Hematoxylin.

Histochemistry and immunohistochemistry

To follow the fate of transplanted cells, histochemical detection of DPP-IV positive clusters was performed on 5µm frozen sections as previously described [38]. Immunohistochemical staining for p-STAT 3 was performed on serial frozen sections. Slides were fixed with 3% formalin, blocked for 30' and incubated with the primary antibody (Cell Signalling Technology, Danvers, MA) overnight at 4°C. Detection of specific signal was accomplished using an HRP/AEC detection IHC Kit (Abcam, Cambridge, UK).

Western blot

Liver tissue samples were homogenized in RIPA lysis buffer containing Protease Inhibitors, then centrifuged at 12000 rpm for 30' at 4°C. Protein concentration in supernatants was measured using the BCA method [42]. Samples (20µg protein) were prepared in Laemmli buffer, boiled at 95°C for 5' then loaded into SDS-PAGE precast gels (Biorad, Hercules, CA) and run under denaturing conditions. Proteins were transferred onto nitrocellulose membranes (Amersham, UK), blocked with 5% non-fat milk for 1 h, then incubated with primary antibody for p21, p27 and p53 (Santa Cruz, Santa Cruz, CA), IL6, beta actin and gapdh (Abcam) overnight at 4°C. Membranes were washed and incubated for 2 h with the appropriate secondary antibody conjugated with HRP. Protein bands were detected using a chemoluminescent substrate (Biorad) and imaged onto Kodak film.

RNA isolation, RT-PCR and Real-Time qPCR

Total RNA was isolated using TRIzol reagent (Invitrogen, Carlsbad, CA) according to the

manufacturer's protocol. RNA integrity and purity were confirmed by 1% agarose gel electrophoresis and OD260/OD280 nm absorption ratio >1.8. Two grams of DNase-I treated RNA of each sample were reverse-transcribed by PCR using Promega reagents. The resulting cDNA was analyzed by quantitative real-time PCR using specific TaqMan assays and TaqMan Gene Expression Master Mix on an StepOne System (all from Applied Biosystems, Carlsbad, CA). The rat specific assays were: IL-6 (Rn01410330_m1); β 2-microglobulin (Rn00560865_m1). For both assays the thermal profile was as follows: 50°C for 2 minutes, 95°C for 10 minutes, 45 cycles at 95°C for 15 seconds and 60°C for 1 minute. Fold change was calculated by the 2- $\Delta\Delta$ CT method [43].

ACKNOWLEDGEMENTS

We thank Mrs. Anna Saba and Mr. Roberto Marras for their technical contribution.

CONFLICTS OF INTEREST

The authors declare no conflict of interest.

FUNDING

This work was supported by AIRC (Italian Association for Cancer Research, grant No. IG 10604) and by Sardinian Regional Government (RAS).

REFERENCES

1. Martincorena I, Campbell PJ. Somatic mutation in cancer and normal cells. *Science*. 2015; 349:1483–89. doi: 10.1126/science.aab4082
2. Zhang H, Puleston DJ, Simon AK. Autophagy and Immune Senescence. *Trends Mol Med*. 2016; 22:671–86. doi: 10.1016/j.molmed.2016.06.001
3. Bissell MJ, Labarge MA. Context, tissue plasticity, and cancer: are tumor stem cells also regulated by the microenvironment? *Cancer Cell*. 2005; 7:17–23.
4. Laconi E. The evolving concept of tumor microenvironments. *BioEssays*. 2007; 29:738–44. doi: 10.1002/bies.20606
5. Mantovani A, Garlanda C, Allavena P. Molecular pathways and targets in cancer-related inflammation. *Ann Med*. 2010; 42:161–70. doi: 10.3109/07853890903405753
6. Biswas S, Davis H, Irshad S, Sandberg T, Worthley D, Leedham S. Microenvironmental control of stem cell fate in intestinal homeostasis and disease. *J Pathol*. 2015; 237:135–45. doi: 10.1002/path.4563
7. Semenza GL. The hypoxic tumor microenvironment: A driving force for breast cancer progression. *Biochim Biophys Acta*. 2016; 1863:382–91. doi: 10.1016/j.bbamcr.2015.05.036
8. Laconi S, Pani P, Pillai S, Pasciu D, Sarma DS, Laconi E. A growth-constrained environment drives tumor progression *in vivo*. *Proc Natl Acad Sci USA*. 2001; 98:7806–11. doi: 10.1073/pnas.131210498
9. Henry CJ, Marusyk A, DeGregori J. Aging-associated changes in hematopoiesis and leukemogenesis: what's the connection? *Aging (Albany NY)*. 2011; 3:643–56. doi: 10.18632/aging.100351
10. Jin J, Wang GL, Timchenko L, Timchenko NA. GSK3beta and aging liver. *Aging (Albany NY)*. 2009; 1:582–85. doi: 10.18632/aging.100060
11. Eming SA, Martin P, Tomic-Canic M. Wound repair and regeneration: mechanisms, signaling, and translation. *Sci Transl Med*. 2014; 6:265sr6. doi: 10.1126/scitranslmed.3009337
12. Suram A, Kaplunov J, Patel PL, Ruan H, Cerutti A, Boccardi V, Fumagalli M, Di Micco R, Mirani N, Gurung RL, Hande MP, d'Adda di Fagagna F, Herbig U. Oncogene-induced telomere dysfunction enforces cellular senescence in human cancer precursor lesions. *EMBO J*. 2012; 31:2839–51. doi: 10.1038/emboj.2012.132
13. Coppé JP, Patil CK, Rodier F, Sun Y, Muñoz DP, Goldstein J, Nelson PS, Desprez PY, Campisi J. Senescence-associated secretory phenotypes reveal cell-nonautonomous functions of oncogenic RAS and the p53 tumor suppressor. *PLoS Biol*. 2008; 6:2853–68. doi: 10.1371/journal.pbio.0060301
14. Kuilman T, Peeper DS. Senescence-messaging secretome: SMS-ing cellular stress. *Nat Rev Cancer*. 2009; 9:81–94. doi: 10.1038/nrc2560
15. Nicolai S, Rossi A, Di Daniele N, Melino G, Annicchiarico-Petruzzelli M, Raschella G. DNA repair and aging: the impact of the p53 family. *Aging (Albany NY)*. 2015; 7:1050–65. doi: 10.18632/aging.100858
16. Wuestefeld T, Klein C, Streetz KL, Betz U, Lauber J, Buer J, Manns MP, Müller W, Trautwein C. Interleukin-6/glycoprotein 130-dependent pathways are protective during liver regeneration. *J Biol Chem*. 2003; 278:11281–88. doi: 10.1074/jbc.M208470200
17. McCullough KD, Coleman WB, Smith GJ, Grishan JW. Age-dependent regulation of the tumorigenic potential of neoplastically transformed rat liver epithelial cells by the liver microenvironment. *Cancer Res*. 1994; 54:3668–71.

18. McCullough KD, Coleman WB, Smith GJ, Grisham JW. Age-dependent induction of hepatic tumor regression by the tissue microenvironment after transplantation of neoplastically transformed rat liver epithelial cells into the liver. *Cancer Res.* 1997; 57:1807–13.
19. Solt DB, Cayama E, Tsuda H, Enomoto K, Lee G, Farber E. Promotion of liver cancer development by brief exposure to dietary 2-acetylaminofluorene plus partial hepatectomy or carbon tetrachloride. *Cancer Res.* 1983; 43:188–91.
20. Miller DG. On the nature of susceptibility to cancer. The presidential address. *Cancer.* 1980; 46:1307–18. doi: 10.1002/1097-0142(19800915)46:6<1307::AID-CNCR2820460602>3.0.CO;2-6
21. Fulop T, Larbi A, Kotb R, de Angelis F, Pawelec G. Aging, immunity, and cancer. *Discov Med.* 2011; 11:537–50.
22. Lutz CT, Quinn LS. Sarcopenia, obesity, and natural killer cell immune senescence in aging: altered cytokine levels as a common mechanism. *Aging (Albany NY).* 2012; 4:535–46. doi: 10.18632/aging.100482
23. Wong C, Goldstein DR. Impact of aging on antigen presentation cell function of dendritic cells. *Curr Opin Immunol.* 2013; 25:535–41. doi: 10.1016/j.coi.2013.05.016
24. Marongiu F, Serra MP, Sini M, Angius F, Laconi E. Clearance of senescent hepatocytes in a neoplastic-prone microenvironment delays the emergence of hepatocellular carcinoma. *Aging (Albany NY).* 2014; 6:26–34. doi: 10.18632/aging.100631
25. Pasciu D, Montisci S, Greco M, Doratiotto S, Pitzalis S, Pani P, Laconi S, Laconi E. Aging is associated with increased clonogenic potential in rat liver in vivo. *Aging Cell.* 2006; 5:373–77. doi: 10.1111/j.1474-9726.2006.00230.x
26. Shackel NA, Vadas MA, Gamble JR, McCaughan GW. Beyond liver fibrosis: hepatic stellate cell senescence links obesity to liver cancer by way of the microbiome. *Hepatology.* 2014; 59:2413–15. doi: 10.1002/hep.26932
27. Cantor DJ, David G. SIN3B, the SASP, and pancreatic cancer. *Mol Cell Oncol.* 2014; 1:e969167. doi: 10.4161/23723548.2014.969167
28. Bondar T, Medzhitov R. p53-mediated hematopoietic stem and progenitor cell competition. *Cell Stem Cell.* 2010; 6:309–22. doi: 10.1016/j.stem.2010.03.002
29. Merino MM, Levayer R, Moreno E. Survival of the Fittest: Essential Roles of Cell Competition in Development, Aging, and Cancer. *Trends Cell Biol.* 2016; 26:776–88. doi: 10.1016/j.tcb.2016.05.009
30. Gil J, Rodriguez T. Cancer: The Transforming Power of Cell Competition. *Curr Biol.* 2016; 26:R164–66. doi: 10.1016/j.cub.2016.01.006
31. Serra MP, Marongiu F, Marongiu M, Contini A, Laconi E. Cell-autonomous decrease in proliferative competitiveness of the aged hepatocyte. *J Hepatol.* 2015; 62:1341–48. doi: 10.1016/j.jhep.2015.01.015
32. Laconi E, Pani P, Farber E. The resistance phenotype in the development and treatment of cancer. *Lancet Oncol.* 2000; 1:235–41. doi: 10.1016/S1470-2045(00)00154-6
33. Rossi DJ, Bryder D, Seita J, Nussenzweig A, Hoeijmakers J, Weissman IL. Deficiencies in DNA damage repair limit the function of haematopoietic stem cells with age. *Nature.* 2007; 447:725–29. doi: 10.1038/nature05862
34. Henry CJ, Marusyk A, Zaberezhnyy V, Adane B, DeGregori J. Declining lymphoid progenitor fitness promotes aging-associated leukemogenesis. *Proc Natl Acad Sci USA.* 2010; 107:21713–18. doi: 10.1073/pnas.1005486107
35. Vas V, Wandhoff C, Dörr K, Niebel A, Geiger H. Contribution of an aged microenvironment to aging-associated myeloproliferative disease. *PLoS One.* 2012; 7:e31523. doi: 10.1371/journal.pone.0031523
36. Henry CJ, Casás-Selves M, Kim J, Zaberezhnyy V, Aghili L, Daniel AE, Jimenez L, Azam T, McNamee EN, Clambey ET, Klawitter J, Serkova NJ, Tan AC, et al. Aging-associated inflammation promotes selection for adaptive oncogenic events in B cell progenitors. *J Clin Invest.* 2015; 125:4666–80. doi: 10.1172/JCI83024
37. Blagosklonny MV. Prevention of cancer by inhibiting aging. *Cancer Biol Ther.* 2008; 7:1520–24. doi: 10.4161/cbt.7.10.6663
38. Thompson NL, Hixson DC, Callanan H, Panzica M, Flanagan D, Faris RA, Hong WJ, Hartel-Schenk S, Doyle D. A Fischer rat substrain deficient in dipeptidyl peptidase IV activity makes normal steady-state RNA levels and an altered protein. Use as a liver-cell transplantation model. *Biochem J.* 1991; 273:497–502. doi: 10.1042/bj2730497
39. Semple-Roberts E, Hayes MA, Armstrong D, Becker RA, Racz WJ, Farber E. Alternative methods of selecting rat hepatocellular nodules resistant to 2-acetylaminofluorene. *Int J Cancer.* 1987; 40:643–45. doi: 10.1002/ijc.2910400512
40. Berry MN, Friend DS. High-yield preparation of isolated rat liver parenchymal cells: a biochemical and fine structural study. *J Cell Biol.* 1969; 43:506–20. doi: 10.1083/jcb.43.3.506

41. Seglen PO. Preparation of isolated rat liver cells. *Methods Cell Biol.* 1976; 13:29–83. doi: 10.1016/S0091-679X(08)61797-5
42. Smith PK, Krohn RI, Hermanson GT, Mallia AK, Gartner FH, Provenzano MD, Fujimoto EK, Goeke NM, Olson BJ, Klenk DC. Measurement of protein using bicinchoninic acid. *Anal Biochem.* 1985; 150:76–85. doi: 10.1016/0003-2697(85)90442-7
43. Kenneth J. Livak and Thomas D. Schmittgen. Analysis of relative gene expression data using real-time quantitative PCR and the $2^{-\Delta\Delta C(T)}$. *Method. Methods.* 2001; 25:402–08. doi: 10.1006/meth.2001.1262