

Effect of Invasive Alien Species on the Co-Occurrence Patterns of Bryophytes and Vascular Plant Species—The Case of a Mediterranean Disturbed Sandy Coast

Michela Marignani ^{1,*}, Michele Lussu ¹, Valeria Murru ¹, Giovanni Bacaro ² and Annalena Cogoni ¹

¹ Department of Life and Environmental Sciences, Botany Division, University of Cagliari, Viale S. Ignazio, 13, 09123 Cagliari, Italy; michelelussu86@gmail.com (M.L.); valem79v@libero.it (V.M.); cogoni@unica.it (A.C.)

² Department of Life Sciences, University of Trieste, Via Licio Giorgieri 10, 34127 Trieste, Italy; gbacaro@units.it

* Correspondence: marignani@unica.it

Received: 6 March 2020; Accepted: 16 April 2020; Published: 20 April 2020

Abstract: Cross-taxon analyses can explain patterns of interaction between taxa and their application in conservation studies can drive management actions. In a coastal sand dune system characterized by a high human pressure, we explored the co-occurrence patterns between vascular plants and bryophytes, with a focus on how the occurrence of invasive alien species (IAS) can affect those taxa and their relationships. Species congruences were evaluated at the community level considering taxonomic and functional diversities. Predictive co-correspondence analysis (Co-CA) was applied to quantify the strength of vascular plant communities in predicting bryophytes species composition. The relationship between the composition of vascular plants and bryophytes was significant, even if weak. Altitude and percentage of bare soil cover are the environmental variables exerting greater influence on the two taxa. The presence of IAS affects communities in an opposite way: for vascular plants, species richness increases with the presence of invasive alien species; for bryophytes, IAS's presence has a low but significant negative influence, both on species richness and in terms of functional diversity. Results give elements for future studies on the effect of IAS on the bryophytes colonizing coastal sand dunes.

Keywords: biological invasion; *Carpobrotus* spp.; Italy; Mantel test; Sardinia; *Tortella flavovirens*

1. Introduction

Coastal environments represent transitional habitats, characterized by abiotic factors that define a strong gradient of vegetation successions along the sea-land direction [1–3]. In terms of biodiversity and landscape composition, their high ecological value is expressed by dynamic interactions between different plant communities in a very restricted area [4,5]. In these ecosystems, an essential ecological function is related to biological soil crusts (BSCs), i.e., ecological pioneer communities of living organisms present on the soil surface in arid and semiarid ecosystems. Due to their ability to fix sand, BSCs promote the increase of organic matter content in the soils, facilitating the existence of the suitable conditions for the establishment, colonization and growth of vascular plants [6,7]. Among biological soil crusts (BSCs), moss crusts represent an advanced stage of development [6]. Regardless of this fundamental ecological part played by mosses, ecological investigations of coastal ecosystems

have been mainly focused on vascular plant communities, rarely involving cryptogamic taxa [4]. The few comparative studies on the coastal Mediterranean bryophytic flora revealed that the species pool is poor and characterized by little variability; communities are composed by few species showing acrocarpic growth forms that colonize xeric, sunny and often disturbed habitats, like the arenicolous cosmopolitan *Tortella flavovirens*. Compared to the Atlantic coastal dunes, Mediterranean ones host few pleurocarpus species, which are more demanding in terms of water and soil availability [4,8].

The lack of knowledge on this crucial, but neglected, taxon could be filled using a cross-taxon approach, i.e., studying the congruence among different biological groups and using the inferred relationship to predict compositional patterns in unknown environments [9]. A significant number of studies on cross-taxon congruence show that terrestrial species richness can be predicted by vascular plant richness and bio-indication [10]. Despite this information, few examples deal with dune ecosystems [11]. Cross-taxon studies exploring covariation patterns between vascular plants and bryophytes are scarce and mainly focused on forest ecosystems [12–16] and nival and riverine habitats [17], showing contrasting results [14].

In the Mediterranean Basin, well preserved coastal habitats became rarer as the anthropogenic pressure increased, mainly consisting in touristic settlements, habitat fragmentation and inappropriate land management, such as reforestation with alien species [11,18–21]. Invasive alien species (IAS) are recognized as an important threat to biodiversity worldwide [22] and especially in rare and extreme environments (such as alpine zone or isolated islands, [23–25]). On dune ecosystems, in particular, IAS alter the structure of native communities in different ways: reducing functional, phylogenetic and taxonomic diversities and excluding closely related and ecologically similar taxa [26–30].

Despite the well-known urgency to preserve the fragility of coastal ecosystems from IAS in the Mediterranean Basin [2,31,32], the literature on cross-taxon relation involving IAS is still limited. In coastal areas where *Acacia spp*, *Eucaliptus spp* and *Pinus spp* were used for reforestation, those alien species are limiting light availability to bryophytes and photophyles of lichens, but they also constitute a long-degrading litter, affecting negatively soil availability [11].

Moreover, notwithstanding that in recent decades plant functional trait-based approaches in ecological studies grew enormously [33], also focusing on dunes and biological invasions [34–36], we noticed that very few studies investigated the relationship among functional diversity of vascular plants and bryophytes [37].

Increasing urban sprawl and littoralization on coastal areas are squeezing dune ecosystems between coastal erosion and the expanding human pressure: in the last 50 years, those habitats have been increasingly disturbed and threatened by several hazards, by depleting the biodiversity and transforming their structure [2,5,19,21]. This situation is posing questions on the appropriate management to preserve the remnants of coastal dune ecosystems and the need to focus on the role of invasive alien species, also considering the recent legislative instruments that Europe provided for IAS control and eradication (EU Regulation 1143/2014 on Invasive Alien Species).

In this context, we investigated a Mediterranean coastal dune characterized by a high human pressure, focusing on vascular plants and bryophytes composition to learn how those disturbed ecosystems respond to environmental features and to the presence of IAS, giving useful hints for their management.

Based on a probabilistic sampling, we estimated the congruence patterns (both in terms of richness and composition) between vascular plants and bryophytes. Furthermore, considering the high impact of IAS in the study area, we are interested in analyzing the possible negative influence of IAS on these relationships. In detail, our purpose is to answer to the following research questions: (i) can the composition of vascular plants predict the composition of the bryophytes communities? (ii) What are the environmental factors related with the covariation of the two communities? Which are the factors better explaining the bryophytes diversity pattern? (iii) Does the presence of IAS have an impact on vascular plants and bryophytes communities and on their functional diversity?

2. Materials and Methods

2.1. Study Area

The study area is located in Villasimius, Southern Sardinia, Italy. The site is the coastal sand dune of “Porto Giunco” within the Site of Community Interest ITB040020 “Isola dei Cavoli, Serpentara, Punta Molentis”, fully included in the marine protected Area Capo Carbonara (Figure 1). Lithologies are essentially referred to the batolite of Sarrabus emerged at the end of the Ercinic orogenesis in the Middle Carboniferous, mainly composed of granites and granodiorites subjected to tectonic movement during the alpine orogenesis [38]. The bioclimate for the area is described as a Lower Thermomediterranean, Lower Dry, Euoceanic Strong, with a mean temperature of 17.8 °C and 561 mm of annual rain [39].

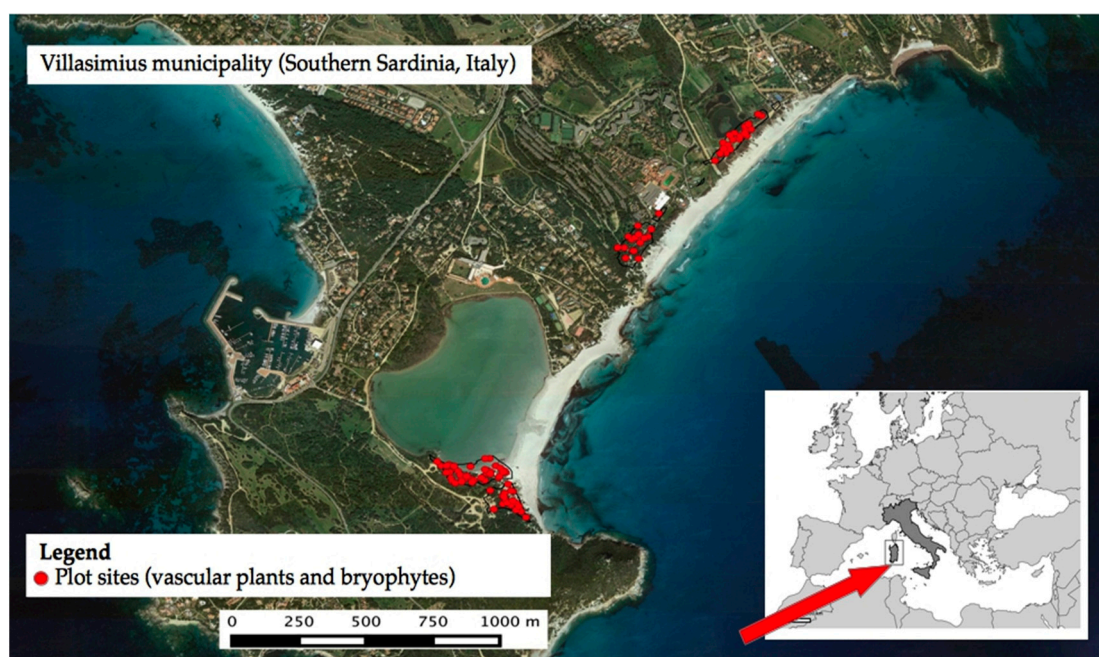


Figure 1. Study area and sampling sites.

The dominant vegetation can be described as Sardinian psammophilous geosigmetum of coastal sand dunes (*Cakiletea*, *Ammophiletea*, *Crucianellion maritimae*, *Malcolmietalia*, *Juniperion turbinatae*) and by the presence of small *Juniperus spp.* communities composed by *J. macrocarpa* and *J. phoenicia* var. *turbinata* (habitat 2250* Coastal dunes with *Juniperus spp.*, [40]). Dominant species are *Juniperus oxycedrus* ssp. *macrocarpa* and *Pistacia lentiscus*, accompanied by *Pancratium maritimum*, *Lotus cytisoides* and *Crucianella maritima*. Remnants of habitats of high naturalistic value are strongly menaced by anthropic pressure, namely urbanization, touristic exploitation and unadvised reforestation that were carried out using alien species, especially in the backdunes, mostly using *Carpobrotus spp.*, *Agave spp.*, *Eucalyptus spp.* and *Acacia spp.* Due to this situation, in recent decades the area was involved in different naturalistic engineering projects in order to protect, conserve and restore the typical dune vegetation. The projects included the positioning of cane structures for sand retention and the consequent recovery of the dune profile. The eradication of invasive species (*Carpobrotus spp.*, *Agave spp.* and *Acacia spp.*) in the priority habitats were accompanied with the use of naturalistic engineering techniques, such as the positioning of coconut fiber bio-nets to avoid erosion, particularly subsequently to eradication activities. After the eradications, the sites were sown with seeds and native plants multiplied in nurseries using germplasm previously collected on site [41].

2.2. Sampling Design and Data Collection

We delimited the main polygons of residual dune vegetation located along the 3 km long sand dune of Porto Giunco (Figure 1) and, to avoid the edge effect, we applied a 10 m internal buffer to the polygons. On the remaining area of about 10 ha (7 polygons), according to a simple random sampling, we selected one hundred 60 × 60 cm squared plots, a standard dimension to sample Mediterranean bryophytes [42–44]. In each plot we measured the presence and the cover abundance (in percentage) of vascular plants and bryophytes.

As environmental predictors, we used the plot spatial coordinates, gathered in the field using a GPS (Garmin GPSMAP 64S, UTM WGS84), along with the plot distance from the sea line and the altitude a.s.l. Moreover, each plot was assigned to one of the main four identified vegetation types (bare soil, low scattered Mediterranean scrub, low Mediterranean scrub and tall Mediterranean scrub, Table 1), according to the dominant physiognomy (covering more than 50% of the plot). Vascular plants nomenclature follows Pignatti [45]; vascular plant species were assigned the IAS status following Galasso et al. [46]. Nomenclature for bryophytes followed Hodgetts [47].

Table 1. Predictor variables available at plot scale.

Variables	Mean	Range (min-max)
Spatial coordinates—X	545,048	544,534–545,797
Spatial coordinates—Y	4330,030	4,329,298–4,331,129
Altitude a.s.l. (m)	2.03	0.51–13.55
Sea distance (m)	131.96	32.36–343.81
Bare soil (%)	28.69	0–100
IAS cover (%)	1.39	0–100
Ratio Alien Cover/Total Cover	0.09	0–1
IAS presence/absence	-	0–1
Vegetation type (categorical, 4 levels)		Number of plots
bare soil	26	
low scattered Mediterranean scrub	12	
low Mediterranean scrub	31	
tall Mediterranean scrub	31	

2.3. Functional Traits

For vascular plants, including IAS, we used the following functional traits: biological form, chorotype, Ellenberg indices ([45,48–50]).

For bryophytes, we followed Sérgio et al. [51] for chorological elements and During, Dierßen and Hill et al. [52–54] for growth form, life forms, life strategy and ecological characteristics. We also adopted literature data for morphofunctional characters [55,56]. In detail, we selected spore diameter min/max (µm), gametophore length min/max (mm), sexual condition (gametophore) and “leaf” length min/max (mm).

2.4. Data Analysis

Cross-taxon congruence between vascular plants and bryophytes, their relationships with the environmental predictors and the effect of the presence of invasive vascular plants were assessed using different statistical methods. Firstly, two plot-to-plot compositional distance matrices were calculated separately for vascular plants and bryophytes using the Bray–Curtis dissimilarity coefficient on transformed (log+1) abundance data. A third Bray–Curtis dissimilarity matrix was also calculated, for the same plots, but it considered solely the IAS composition for vascular plant composition, adding a dummy species (0.001 abundance) to all samples to avoid calculation problems where no IAS have been detected. Conversely, no bryophytes IAS were sampled in any plot. The

same correlation analyses were also performed downscaling the species abundances to presence/absence and using the Jaccard dissimilarity coefficient.

Species functional traits for both plant communities and bryophytes were used to calculate pairwise functional distances among plots using the package “adiv” [57]. Specifically, considering the different nature of functional traits available (quantitative, ordinal, nominal), we computed two functional dissimilarity matrices (one for vascular plants and one for bryophytes) using a modified version of the Gower distance allowing for the treatment of various statistical types of variables (for more details about the methodology see [58]). To investigate the strength of the correlations among compositional and functional diversity of vascular plants vs. bryophytes and the correlations among compositional and functional diversity of invasive alien vascular plant species vs. bryophytes, we used the r Pearson’s correlation coefficients testing their significance with Mantel tests (based on the null distribution of the r Pearson’ correlation coefficient on 9999 permutations, selected α level = 0.05). Partial Mantel tests were also performed testing the same relationships described above but using a conditional distance matrix based on the Euclidean distances of the plot variables (i.e., coordinates, altitude, distance from the sea line, vegetation physiognomy).

Furthermore, predictive co-correspondence analysis (Co-CA, see [59,60] for a full description of this method), was used to quantify the strength of vascular plant community data in predicting bryophytes species composition. A second predictive Co-CA was also performed to explore if and how IAS vascular plant composition influences (positively or negatively) the composition of bryophytes. A leave-one-out cross-validatory fit percentage was estimated, for each Co-CA, to select the minimal adequate predictive ordination axes. Cross-validatory fit > 0 implicitly validates the model, indicating that prediction is better than the one obtained under the null model [60]. Hence, a permutation test for predictive Co-CA models were performed to assess the significance of each ordination axis (statistical significance level selected $\alpha = 0.05$, 999 permutations); in addition, environmental variables were fitted onto Co-CA ordination axes aiming at understanding the meaning of axes in term of the underlying ecological gradients. The “envfit.coca” function in the “vegan” R package [61] was used at this scope and the associated goodness of statistic fit was the squared Pearson correlation coefficient (r^2).

Finally, using generalized linear models (GLM) we tested for linear relationships of biotic (IAS presence) and abiotic predictors on (1) species richness and (2) functional diversity of bryophytes in the study area. The selected measure of bryophytes functional diversity for the GLM was the plot-based Rao’s Q proposed by Ricotta et al. [62] (all functional traits available for bryophytes were used for this calculation). As predictors, in both models, variables listed in Table 1 were used. A step-wise variable selection procedure was adopted to consolidate the Minimal Adequate Model (MAM). Akaike Information Criterion (AIC) was selected to find, among all the subsets of reduced models, the final MAM.

Mantel and partial Mantel tests were computed using R package “vegan” [61]; Co-CA and related diagnostics with R package “cocorresp” [63]. All the other statistical analyses were performed using basic R functions like “glm” [64]. For more details on the GLM specifications and selected options, please, see Supplementary Materials I.

3. Results

Eleven bryophytes and 55 vascular plants were detected. Five vascular plants were classified as invasive alien species (IAS): *Acacia saligna*, *Agave americana*, *Carpobrotus* spp., *Myoporus tetrandum* and *Opuntia ficus-indica* (Table 2). IAS occurred in 13% of the sampled plots: *Carpobrotus* spp. was the most abundant one and it was recorded in 8% of the sampled plots with a variable coverage, ranging from 25% to 80%.

Table 2. List of vascular plants and bryophytes recorded. Invasive alien species (IAS) are indicated with an asterisk*.

Vascular Plants		
* <i>Acacia saligna</i> (Labill.) H.L.	<i>Erodium chium</i> Sm.	<i>Parapholis strigosa</i> (Dumort.) C.E.Hubb.
* <i>Agave americana</i> L.	<i>Eryngium maritimum</i> L.	<i>Pistacia lentiscus</i> L.
* <i>Carpobrotus</i> sp.	<i>Filago pygmaea</i> L.	<i>Plantago bellardii</i> All.
* <i>Myoporum tetrandrum</i> Domin	<i>Galium parisiense</i> L.	<i>Plantago crassifolia</i> Forssk.
* <i>Opuntia ficus-indica</i> (L.) Mill.	<i>Hedypnois cretica</i> (L.) Willd.	<i>Plantago lanceolata</i> L.
<i>Artemisia arborescens</i> L.	<i>Helichrysum italicum</i> (Roth) G.Don	<i>Polygonum maritimum</i> L.
<i>Asparagus acutifolius</i> L.	<i>Inula crithmoides</i> Spreng.	<i>Rubia peregrina</i> L.
<i>Asparagus stipularis</i> Forssk.	<i>Juncus acutus</i> Retz.	<i>Salicornia ramosissima</i> J.Woods
<i>Asphodelus microcarpus</i> Rchb.	<i>Juncus maritimus</i> E.Mey.	<i>Salsola kali</i> L.
<i>Cakile maritima</i> Scop.	<i>Juniperus oxycedrus</i> var. <i>macrocarpa</i> (Sm.) Silba	<i>Salsola soda</i> L.
<i>Cerastium glomeratum</i> Thuill.	<i>Juniperus phoenicea</i> L.	<i>Sarcocornia fruticosa</i> (L.) A.J.Scott
<i>Cistus monspeliensis</i> L.	<i>Lagurus ovatus</i> L.	<i>Scabiosa maritima</i> L.
<i>Clematis flammula</i> L.	<i>Limonium retirameum</i> Greuter & Burdet	<i>Senecio leucanthemifolius</i> Phil.
<i>Crithmum maritimum</i> L.	<i>Lophochloa pubescens</i> (Lam.) H.Scholz	<i>Senecio vulgaris</i> L.
<i>Crucianella maritima</i> L.	<i>Lotus cytisoides</i> L.	<i>Silene nicaeensis</i> All.
<i>Cyperus capitatus</i> Poir.	<i>Minuartia geniculata</i> Thell.	<i>Silene nocturna</i> L.
<i>Cyperus kalli</i> (Forssk.) Murb.	<i>Olea sylvestris</i> Mill.	<i>Sporobolus pungens</i> Kunth
<i>Elymus farctus</i> (Viv.) Runemark ex Melderis	<i>Pancratium maritimum</i> L.	<i>Stipa capensis</i> Thunb.
		<i>Tolpis virgata</i> (Desf.) Bertol.
Bryophytes		
<i>Barbula unguiculata</i> Hedw.	<i>Microbryum davallianum</i> (Sm.) R.H.Zander	<i>Tortella squarrosa</i> (Brid.) Limpr.
<i>Bryum dichotomum</i> Hedw.	<i>Ptychostomum imbricatum</i> (Müll. Hal.) D. T. Holyoak et N. Pedersen	<i>Tortula atrovirens</i> (Sm.) Lindb.
<i>Bryum radiculosum</i> Brid.	<i>Tortella flavovirens</i> (Bruch.) Broth.	<i>Tortella lindbergii</i> Broth.
<i>Funaria hygrometrica</i> Hedw.	<i>Tortella humilis</i> (Hedw.) Jenn.	

Among Bryophytes, *Tortella flavovirens* was the most common species. This species, that could be classically described as a pioneer species, was the only bryophyte present in plots where IAS were recorded. The mean IAS coverage per plot was less than 5% (Table 1).

The correlation between vascular plants and bryophytes species richness was positive but not significant ($r = 0.15$; $p > 0.05$). However, predictive Co-CA on the species composition for the two groups showed that vascular plant communities have a certain predictive power on the composition of bryophytes (plants explain 21.4% of the cumulated variance in bryophytes when significant axes are considered, Figure 2 and Table 3). In the Co-CA ordination space, altitude and percentage of bare soil were significantly related with the compositional differentiation of both vascular plants and bryophytes communities ($r^2 = 0.15$, $p < 0.05$ for altitude, $r^2 = 0.149$, $p < 0.01$ for bare soil, Figure 2). This result was also corroborated by GLMs (Tables 4 and 5, Supplementary Materials I): percentage of bare soil and vegetation type were the main variables statistically supported for bryophytic species richness (Table 4) and functional diversity (Table 5)

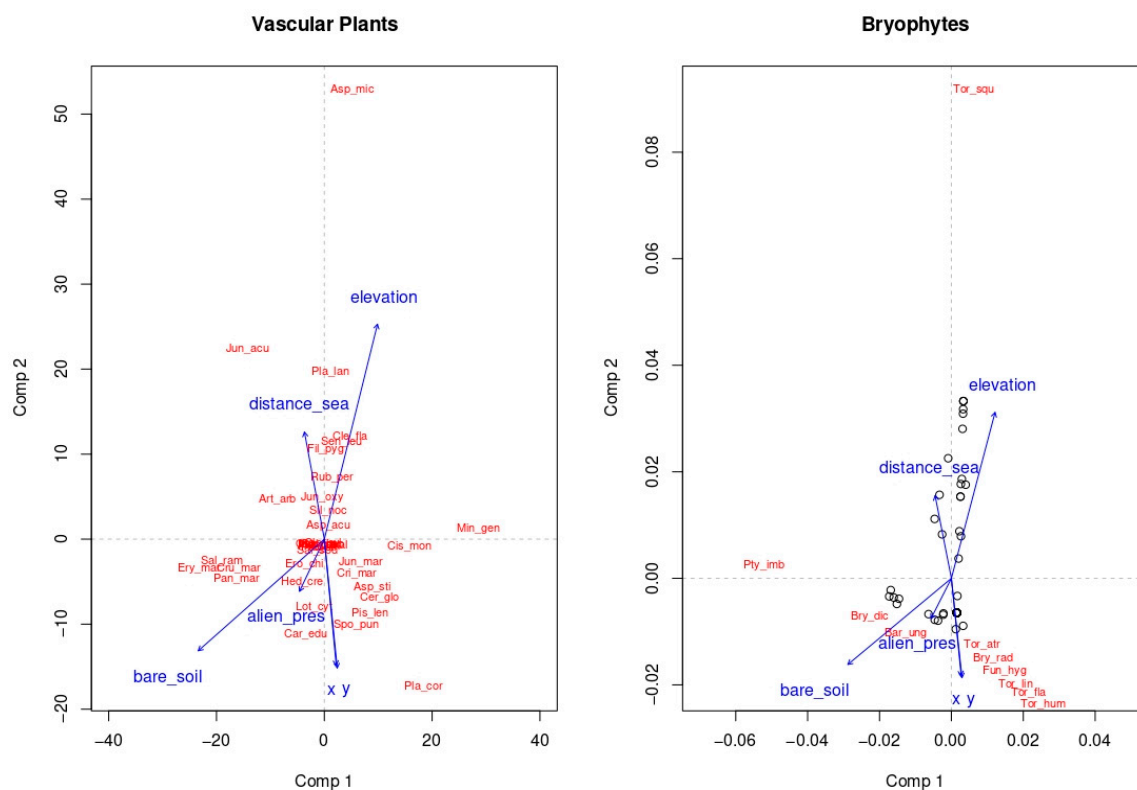


Figure 2. Vascular plant communities show a predictive power on the composition of bryophytes: altitude a.s.l. and bare soil cover are related with the variation of both communities in the ordination space. Vascular plant species are labelled as follows: Aca_sal--Acacia saligna; Aga_ame--Agave americana; Car_sp.--Carpobrotus sp.; Myo_tet--Myoporum tetrandrum ; Opu_fic--Opuntia ficus-indica; Art_arb--Artemisia arborescens; Asp_acu--Asparagus acutifolius; Asp_sti--Asparagus stipularis; Asp_mic--Asphodelus microcarpus; Cak_mar--Cakile maritima; Cer_glo--Cerastium glomeratum; Cis_mon--Cistus monspeliensis; Cle_fla--Clematis flammula; Cri_mar--Crithmum maritimum; Cru_mar--Crucianella maritima; Cyp_cap--Cyperus capitatus; Cyp_kal--Cyperus kalli; Ely_far--Elymus farctus; Ero_chi--Erodium chium; Ery_mar--Eryngium maritimum; Fil_pyg--Filago pygmaea; Gal_par--Galium parisiense; Hed_cre--Hedypnois cretica; Hel_ita--Helichrysum italicum; Inu_cri--Inula crithmoides; Jun_acu--Juncus acutus ; Jun_mar--Juncus maritimus; Jun_oxy--Juniperus oxycedrus var. macrocarpa; Jun_pho--Juniperus phoenicea; Lag_ova--Lagurus ovatus; Lim_ret--Limonium retirameum; Lop_pub--Lophochloa pubescens; Lot_cyt--Lotus cytisoides; Min_gen--Minuartia geniculata; Ole_syl--Olea sylvestris; Pan_mar--Panicum maritimum; Par_str--Parapholis strigosa; Pis_len--Pistacia lentiscus; Pla_bel--Plantago bellardii; Pla_cra--Plantago crassifolia; Pla_lan--Plantago lanceolata; Pol_mar--Polygonum maritimum; Rub_per--Rubia peregrina; Sal_ram--Salicornia ramosissima; Sal_kal--Salsola kali; Sal_sod--Salsola soda; Sar_fru--Sarcocornia fruticosa; Sca_mar--Scabiosa maritima; Sen_leu--Senecio leucanthemifolius; Sen_vul--Senecio vulgaris; Sil_nic--Silene nicaeensis; Sil_noc--Silene nocturna; Spo_pun--Sporobolus pungens; Sti_cap--Stipa capensis; Tol_vir--Tolpis virgata. Bryophytes are labelled as follows Bar_ung--Barbula unguiculata; Bry_dic--Bryum dichotomum; Bry_rad--Bryum radiculosum; Fun_hyg--Funaria hygrometrica; Mic_dav--Microbryum davallianum; Pty_imb--Ptychostomum imbricatum; Tor_fla--Tortella flavovirens; Tor_hum--Tortella humilis; Tor_squ--Tortella squarrosa; Tor_atr--Tortula atrovirens; Tor_lin--Tortula lindbergii.

Table 3. Summary of co-correspondence analysis. Explained and cumulative explained variance by axes are reported, along with their cross-validated fit and their statistical significance.

Vascular Plants vs. Bryophytes	Explained Variance	Cumulative % Explained Variance	Cross-validated Fit	<i>p</i> -Value
Axis 1	8.991	8.991	1.207	<0.05
Axis 2	8.948	17.939	5.599	<0.05
Axis 3	3.304	21.243	3.327	<0.05
IAS Vascular plants vs. Bryophytes				
Axis 1	4.485	4.485	1.528	<0.05
Axis 2	1.403	5.888	1.156	NS
Axis 3	0.648	6.536	1.124	NS

Table 4. Summary of the Minimal Adequate Model (GLM) relating bryophyte richness at the plot scale to environmental, ecological and biological predictors. Only variables with statistical significance are shown, **p* < 0.05 ***p* < 0.01 ****p* < 0.001.

Bryophytes Richness	Type of Variable	Coeff.	Explained Variability	<i>p</i>
Vegetation type	Categorical (4 levels)	-	13.68%	**
Bare soil	Quantitative	-0.0269	11.20%	***
IAS presence/absence	Binary	-1.378	5%	*

Table 5. Summary of the Minimal Adequate Model (GLM) relating bryophyte functional diversity (measured using RaoQ Index) to environmental, ecological and biological predictors. Only the statistically supported variables are shown, **p* < 0.05 ***p* < 0.01 ****p* < 0.001.

RaoQ Functional Diversity	Type of Variable	Coeff.	Explained Variability	<i>p</i>
Vegetation type	Categorical (4 levels)	-	4.00%	**
Bare soil	Quantitative	0.005	15.20%	***
Sea distance	Quantitative	-0.001	5.1%	*
IAS cover	Quantitative	0.001	4%	*
IAS presence/absence	Binary	-0.024	6.5%	*

Decoupling the two communities, we found a low but significant correlation among the two taxa, using both presence/absence data (Jaccard dissimilarity, Mantel test $r = 0.2$, $p < 0.001$) or abundance data (Bray–Curtis dissimilarity, $r = 0.15$, $p < 0.001$, Figure 3).

The correlation remains significant also when we control for environmental variables via Partial Mantel tests (geographic coordinates, distance from the sea, altitude and physiognomy of the vegetation. Jaccard dissimilarity $r = 0.2$ $p < 0.001$, Bray–Curtis dissimilarity $r = 0.13$ $p < 0.001$).

When we investigated the effect of IAS on native communities, we observed that these influenced both the composition and functional diversity of native vascular plants and bryophytes (Figure 4). The predictive Co-CA analysis on bryophytes based on IAS explains only ~6% of their variance (Figure 4, Table 3).

As in the previous analysis, altitude and percentage of bare soil were significantly correlated with the compositional differentiation of both IAS and bryophytes communities ($r^2 = 0.119$, $p < 0.01$ for altitude, $r^2 = 0.188$, $p < 0.001$, for bare soil, Figure 4).

While vascular species show an increase in the presence of alien species, bryophytes are negatively affected by IAS composition and functional diversity (Figure 4). IAS presence/absence affects negatively bryophytic species richness (Table 4), while functional diversity of bryophytes is negatively influenced by IAS presence (Table 5).

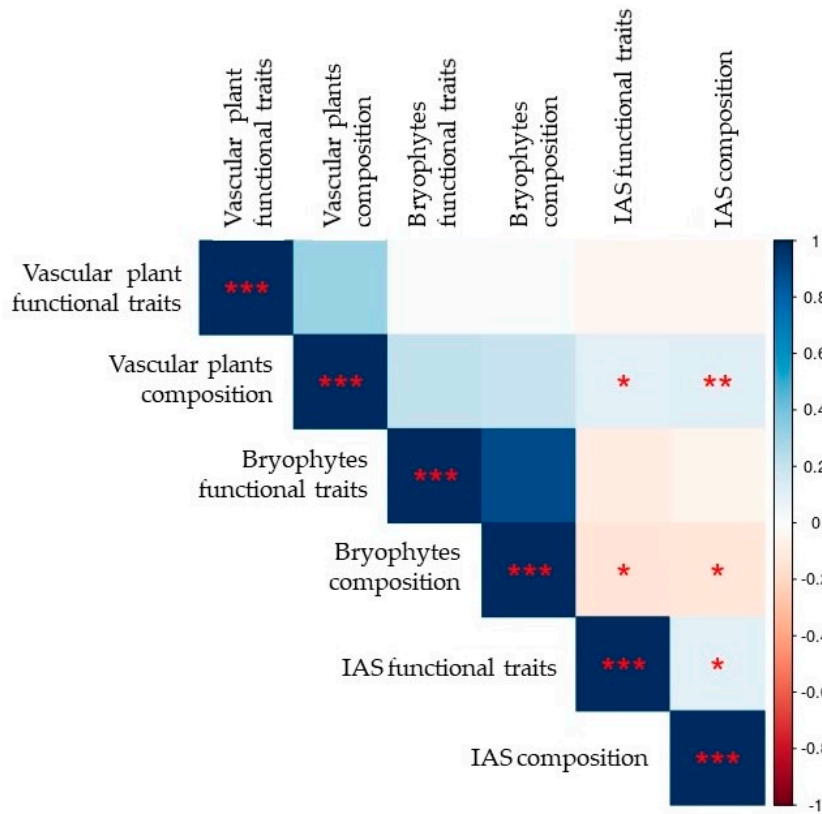


Figure 3. IAS presence shows significant and negative correlation with bryophytes composition, while there is a positive association with vascular plants communities (Jaccard dissimilarities, Mantel Test, r coefficients). Similar results were obtained by eliminating the effect of environmental variables (partial Mantel test, not shown). The lateral bar shows in blue positive correlations, in red negative ones; asterisks indicates the significant p -values (* $p < 0.05$ ** $p < 0.01$ *** $p < 0.001$).

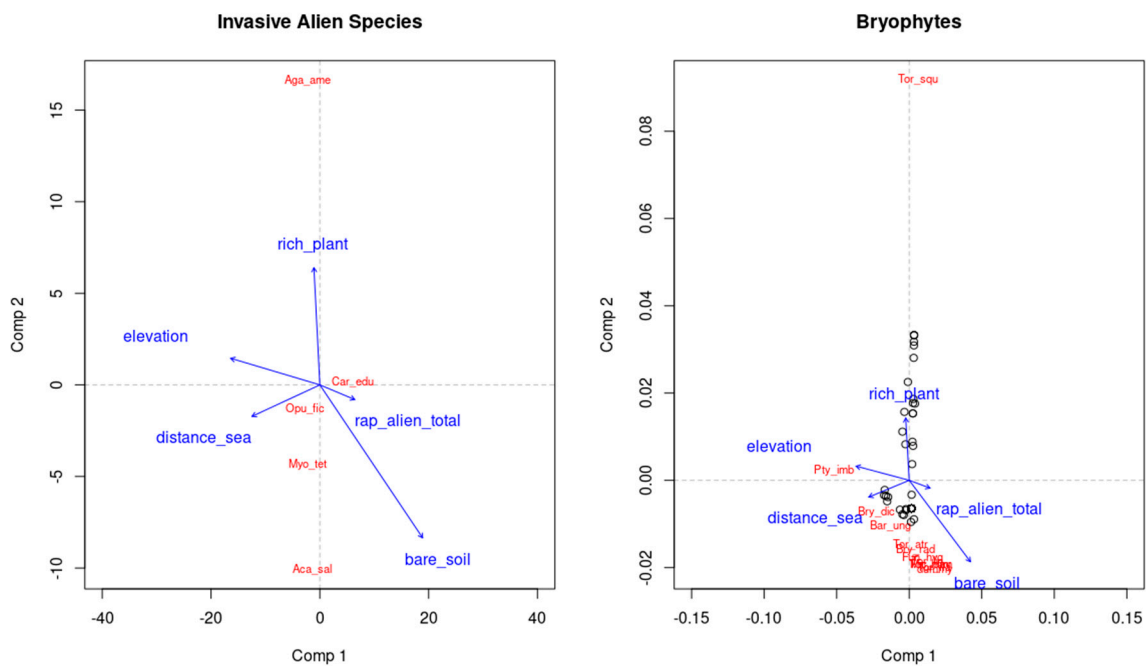


Figure 4. Predictive Co-CA of Bryophytes and IAS vascular plant; the first two axes of IAS explained only~6% of the total compositional variation of bryophytes. For species' label see Figure 2.

4. Discussion

In the Mediterranean basin, coastal ecosystems have been widely investigated to understand patterns of species distribution along natural gradients [4,65,66]. In accordance with previous studies [4], we found that vegetation is distributed along a sea-inland gradient (i.e., altitude and bare soil): both vascular and bryophytes communities follow this gradient, pointing out the pioneer role of bryophytes in establishing soil, trapping and holding moisture [7]. In particular, bryophytes associated to abundant bare soil cover are *Barbula unguiculata* (Pottiales) and *Bryum dichotomum* (Bryales), stress tolerant species living closer to the sea, typical of the communities described as ground pioneer communities with postpioneers, acidiclinal with neutroclinal, with xerophilic tendency (Barbuletea unguiculatae Mohan 1978) able to colonize areas where sea aerosol and winds are stronger [8,53]; another indicative species is *Ptychostomum imbricatulum*, known to be an indicator of moderate/high anthropic impact (Meso-Euhem) [8,53].

In the same way, among vascular plants we can relate the abundance of bare soil with the colonizing gradient described by the presence of *Salicornia ramosissima*, a salt tolerant plant, typical of annual communities, *Crucianella maritima* and *Pancreatium maritimum* typical of Western Mediterranean, chamaephytic, hind-dune communities that develop on semipermanent dunes (Habitats Directive, 2210 Crucianellion maritimae fixed beach dunes) and *Eryngium maritimum*, a species that grows typically on sand and shingle beaches, foredunes and yellow dunes, as well as in semifixed grey dunes. Based on our results we can affirm that a weak relation between bryophytes and vascular plant exists along this gradient, hence the vascular plant community on Mediterranean sandy dunes can be used as a predictor of bryophyte community. This result can be interpreted as linked to the response to the abiotic factors affecting species richness and functional diversity of bryophytes in the study area: percentage of bare soil and vegetation type were the main variables statistically supported for bryophytic species richness and functional diversity.

The most common bryophyte is *Tortella flavovirens*: this pioneer species is frequent in Mediterranean coasts and it usually forms stable cushions leading to soil consolidation (see also [4]) and it is usually associated with foredunes and retrodunal environments. In our study it is the only bryophyte that co-occurs with IAS.

Regarding IAS presence and effect on the vascular plants and bryophytes communities, we observed an opposite response: the correlation for bryophytes is negative in terms of composition and functional traits, while it is positive for vascular plant composition. This relationship is not linked to the response to environmental factors and gives us an important element for future studies on the effect of IAS management on the bryophytes colonizing the coastal sand dunes.

All IAS recorded in our investigation are perennial species: vascular plants might benefit from the IAS presence because they might increment soil and water availability all year long. The negative effect on bryophytes species due to alien species could be associated to the fact that, on dunes, many bryophytes grow under shrubs and trees, taking advantage of shade and a greater water availability [38]. In Mediterranean natural communities, this role is usually covered by bushes or trees such as *Juniperus spp.*, which grow at a slower rate if compared with IAS [4], suggesting that invasive alien species substituting native species can induce an indirect reduction on the diversity of bryophytes. Within IAS, *Carpobrotus spp.* grow closer to the sea and its catastrophic effect in reducing functional and taxonomic diversity of vascular plants is well investigated [67,68]. This fast-growing horticultural succulent species from South Africa affects negatively the presence of native species limiting space availability and its roots cause soil acidification, leaving a long-lasting effect even after its removal.

Nevertheless, co-occurrence among IAS vs. bryophytes and the eventual disruption of the relationship observed among bryophytes and vascular plants was not detectable since IAS and bryophytes coexist only in the 15% of the invaded plots (i.e., *Tortella flavovirens* with *Carpobrotus* and *Agave americana*), definitely data too fragile to extract generalities. We must remember that the area involved in our study is highly compromised by human impact and the vegetation is not shaped exclusively by natural factors. Our results must consider that the high anthropic pressure on natural

communities could be reinforced by the presence of IAS, which were mostly intentionally introduced or escaped from private gardens [69,70]. IAS that were traditionally planted to stabilize sand dunes such as *Acacia saligna*, might induce a contrary effect in the long period, affecting and disrupting not only native vascular plants communities [71] but also the bryophyte ones. However, to investigate how the presence of IAS influences ecological successions through time, long-term and specific design (e.g., BARCI) and analyses will be necessary.

In spite of the relevance in explaining ecological invasion by IAS, a cross-taxon approach is still rare and results are still contrasting. We found that vascular plants and bryophyte communities are both influenced by altitude and bare soil. However, the two communities respond differently to the presence of IAS. Indeed, vascular plant community richness is promoted by IAS presence perhaps because the latter promote greater availability of water or because it follows the rich get richer hypothesis [72], contrasting the invasion paradox [73] and supporting recent global meta-analyses [74]. On the contrary, the presence of IAS has a negative and low but significant influence on bryophytes in terms of species richness and functional diversity. In this study, the low co-occurrence IAS vs. bryophytes does not allow us to gain strong conclusions on the IAS's effects on cross-taxon relation. Future studies should focus on the influence of spatial scale, introducing a multiscale approach, to deepen the functional approach and investigate the pedological component to understand invasion patterns in very fragile ecosystems such as Mediterranean coasts.

Supplementary Materials: The following are available online at www.mdpi.com/1424-2818/12/4/160/s1, Supplementary Materials I: Summary GLMs Statistics and Models Goodness of Fit.

Author Contributions: Conceptualization, M.M., G.B. and A.C.; methodology, M.M. and G.B.; analyses, G.B.; data collection, A.C. and V.M.; writing—original draft preparation M.M. and M.L.; writing—review and editing, G.B. and M.M. All authors contributed critically to the drafts and gave final approval for publication. All authors have read and agreed to the published version of the manuscript

Funding: This research was funded by the Fondazione Banco di Sardegna e Regione Autonoma della Sardegna, LR 7/07 with the grant number DGR 28/21 of 17.05.2015

Acknowledgments: We thank Erik Lallai and Michele Caria for helping during the field work.

Conflicts of Interest: The authors declare no conflict of interest. The funders had no role in the design of the study; in the collection, analyses, or interpretation of data; in the writing of the manuscript, or in the decision to publish the results.

References

1. Sperandii, M.G.; Bazzichetto, M.; Acosta, A.T.R.; Barták, V.; Malavasi, M. Multiple drivers of plant diversity in coastal dunes: A Mediterranean experience. *Sci. Total Environ.* **2019**, *652*, 1435–1444.
2. Malavasi, M.; Santoro, R.; Cutini, M.; Acosta, A.T.R.; Carranza, M.L. What has happened to coastal dunes in the last half century? A multitemporal coastal landscape analysis in Central Italy. *Landsc. Urban Plan.* **2013**, *119*, 54–63.
3. Acosta, A.; Carranza, M.L.; Izzi, C.F. Are there habitats that contribute best to plant species diversity in coastal dunes? *Biodivers. Conserv.* **2008**, *18*, 1087–1098.
4. Murru, V.; Marignani, M.; Acosta, A.T.R.; Cogoni, A. Bryophytes in Mediterranean coastal dunes: Ecological strategies and distribution along the vegetation zonation. *Plant Biosyst. Int. J. Deal. All Asp. Plant Biol.* **2018**, *152*, 1141–1148.
5. *Coastal Dunes: Ecology and Conservation*. In Ecological Studies; Martínez, M.L., Psuty, N.P., Eds.; Springer: Berlin/Heidelberg, Germany, 2004; ISBN 978-3-540-40829-1.
6. Bu, C.; Zhang, K.; Zhang, C.; Wu, S. Key Factors Influencing Rapid Development of Potentially Dune-Stabilizing Moss-Dominated Crusts. *PLoS ONE* **2015**, *10*, 0134447.
7. Maestre, F.T.; Bowker, M.A.; Cantón, Y.; Castillo-Monroy, A.P.; Cortina, J.; Escolar, C.; Escudero, A.; Lázaro, R.; Martínez, I. Ecology and functional roles of biological soil crusts in semi-arid ecosystems of Spain. *J. Arid. Environ.* **2011**, *75*, 1282–1291.

8. Puglisi, M.; Costa, R.; Privitera, M. Bryophyte coastal vegetation of the Cilento and Vallo di Diano National Park (S Italy) as a tool for ecosystem assessment. *Plant Biosyst. Int. J. Deal. All Asp. Plant Biol.* **2012**, *146*, 309–323.
9. Rooney, R.C.; Azeria, E.T. The strength of cross-taxon congruence in species composition varies with the size of regional species pools and the intensity of human disturbance. *J. Biogeogr.* **2015**, *42*, 439–451.
10. Brunbjerg, A.K.; Bruun, H.H.; Dalby, L.; Fløjgaard, C.; Frøslev, T.G.; Høye, T.T.; Goldberg, I.; Læssøe, T.; Hansen, M.D.D.; Brøndum, L. Vascular plant species richness and bioindication predict multi-taxon species richness. *Methods Ecol. Evol.* **2018**, *9*, 2372–2382.
11. Zedda, L.; Cogoni, A.; Flore, F.; Brundu, G. Impacts of alien plants and man-made disturbance on soil-growing bryophyte and lichen diversity in coastal areas of Sardinia (Italy). *Plant Biosyst. Int. J. Deal. All Asp. Plant Biol.* **2010**, *144*, 547–562.
12. Burrascano, S.; Andrade, R.B.; Paillet, Y.; Ódor, P.; Antonini, G.; Bouget, C.; Campagnaro, T.; Gosselin, F.; Janssen, P.; Persiani, A.M. Congruence across taxa and spatial scales: Are we asking too much of species data? *Glob. Ecol. Biogeogr.* **2018**, *27*, 980–990.
13. Santi, E.; Bacaro, G.; Rocchini, D.; Chiarucci, A.; Bonini, I.; Brunialti, G.; Muggia, L.; Maccherini, S. Methodological Issues in Exploring Cross-Taxon Congruence Across Vascular Plants, Bryophytes and Lichens; *Folia Geobot* **2016**, *51*, 297–304.
14. Bagella, S. Does cross-taxon analysis show similarity in diversity patterns between vascular plants and bryophytes? Some answers from a literature review. *C. R. Biol.* **2014**, *337*, 276–282.
15. Sætersdal, M.; Gjerde, I.; Blom, H.H.; Ihlen, P.G.; Myrseth, E.W.; Pommeresche, R.; Skartveit, J.; Solhøy, T.; Aas, O. Vascular plants as a surrogate species group in complementary site selection for bryophytes, macrolichens, spiders, carabids, staphylinids, snails, and wood living polypore fungi in a northern forest. *Biol. Conserv.* **2004**, *115*, 21–31.
16. Brunialti, G.; Frati, L.; Aleffi, M.; Marignani, M.; Rosati, L.; Burrascano, S.; Ravera, S. Lichens and bryophytes as indicators of old-growth features in Mediterranean forests. *Plant Biosyst. Int. J. Deal. All Asp. Plant Biol.* **2010**, *144*, 221–233.
17. Bacaro, G.; Tordoni, E.; Martellos, S.; Maccherini, S.; Marignani, M.; Muggia, L.; Petruzzellis, F.; Napolitano, R.; Da Re, D.; Guidi, T. Cross Taxon Congruence Between Lichens and Vascular Plants in a Riparian Ecosystem. *Diversity* **2019**, *11*, 133.
18. Pinna, M.S.; Bacchetta, G.; Cogoni, D.; Fenu, G. Is vegetation an indicator for evaluating the impact of tourism on the conservation status of Mediterranean coastal dunes? *Sci. Total Environ.* **2019**, *674*, 255–263.
19. Marignani, M.; Bruschi, D.; Astiaso Garcia, D.; Frondoni, R.; Carli, E.; Pinna, M.S.; Cumo, F.; Gugliermetti, F.; Saatkamp, A.; Doxa, A. Identification and prioritization of areas with high environmental risk in Mediterranean coastal areas: A flexible approach. *Sci. Total Environ.* **2017**, *590–591*, 566–578.
20. Ciccarelli, D.; Picciarelli, P.; Bedini, G.; Sorce, C. Mediterranean Sea cliff plants: Morphological and physiological responses to environmental conditions. *J. Plant Ecol.* **2016**, *9*, 153–164.
21. Bajocco, S.; De Angelis, A.; Perini, L.; Ferrara, A.; Salvati, L. The impact of land use/land cover changes on land degradation dynamics: A Mediterranean case study. *Environ. Manag.* **2012**, *49*, 980–989.
22. Seebens, H.; Blackburn, T.M.; Dyer, E.E.; Genovesi, P.; Hulme, P.E.; Jeschke, J.M.; Pagad, S.; Pyšek, P.; Winter, M.; Arianoutsou, M. No saturation in the accumulation of alien species worldwide. *Nat. Commun.* **2017**, *8*, 1–9.
23. Barni, E.; Bacaro, G.; Falzoi, S.; Spanna, F.; Siniscalco, C. Establishing climatic constraints shaping the distribution of alien plant species along the elevation gradient in the Alps. *Plant Ecol.* **2012**, *213*, 757–767, doi:10.1007/s11258-012-0039-z.
24. Bacaro, G.; Maccherini, S.; Chiarucci, A.; Jentsch, A.; Rocchini, D.; Torri, D.; Gioria, M.; Tordoni, E.; Martellos, S.; Altobelli, A. Distributional patterns of endemic, native and alien species along a roadside elevation gradient in Tenerife, Canary Island. *Comm. Ecol.* **2015**, *16*, 223–234, doi:10.1556/168.2015.16.2.10.
25. Tordoni, E.; Napolitano, R.; Nimis, P.; Castello, M.; Altobelli, A.; Da Re, D.; Zago, S.; Chines, A.; Martellos, S.; Maccherini, S. Diversity patterns of alien and native plant species in Trieste port area: Exploring the role of urban habitats in biodiversity conservation. *Urban Ecosys* **2017**, *20*, 1151–1160, doi:10.1007/s11252-017-0667-0.
26. Tordoni, E.; Petruzzellis, F.; Nardini, A.; Savi, T.; Bacaro, G. Make it simpler: Alien species decrease functional diversity of coastal plant communities. *J. Veg. Sci.* **2019**, *30*, 498–509.

27. Marcantonio, M.; Rocchini, D.; Ottaviani, G. Impact of alien species on dune systems: A multifaceted approach. *Biodivers. Conserv.* **2014**, *23*, 2645–2668.
28. Gallien, L.; Carboni, M. The community ecology of invasive species: Where are we and what's next? *Ecography* **2017**, *40*, 335–352.
29. Tordoni, E.; Napolitano, R.; Maccherini, S.; Da Re, D.; Bacaro, G. Ecological drivers of plant diversity patterns in remnants coastal sand dune ecosystems along the northern Adriatic coastline. *Ecol. Res.* **2018**, 1157–1168, doi:10.1007/s11284-018-1629-6.
30. Tordoni, E.; Petruzzellis, F.; Nardini, A.; Bacaro, G. Functional Divergence Drives Invasibility of Plant Communities at the Edges of a Resource Availability Gradient. *Diversity* **2020**, *12*, 148, doi:10.3390/d12040148.
31. Malavasi, M.; Santoro, R.; Cutini, M.; Acosta, A.T.R.; Carranza, M.L. The impact of human pressure on landscape patterns and plant species richness in Mediterranean coastal dunes. *Plant Biosyst. Int. J. Deal. All Asp. Plant Biol.* **2016**, *150*, 73–82.
32. Gubbay, S.; Janssen, J.A.M. *European Red List of Habitats*; Publications Office of the European: Luxembourg: 2005.
33. Garnier, E.; Navas, M.-L.; Grigulis, K. *Plant Functional Diversity: Organism Traits, Community Structure, and Ecosystem Properties*; Oxford University Press: Oxford, UK; New York, NY, USA, 2015; ISBN 978-0-19-875737-5.
34. Carboni, M.; Acosta, A.T.R.; Ricotta, C. Are differences in functional diversity among plant communities on Mediterranean coastal dunes driven by their phylogenetic history? *J. Veg. Sci.* **2013**, *24*, 932–941.
35. Prisco, I.; Carboni, M.; Jucker, T.; Acosta, A.T.R. Temporal changes in the vegetation of Italian coastal dunes: Identifying winners and losers through the lens of functional traits. *J. Appl. Ecol.* **2016**, *53*, 1533–1542.
36. Hulme, M., P.E.; Bernard-Verdier Comparing traits of native and alien plants: Can we do better? *Funct. Ecol.* **2018**, *32*, 117–125.
37. Chelli, S.; Marignani, M.; Barni, E.; Petraglia, A.; Puglielli, G.; Wellstein, C.; Acosta, A.T.R.; Bolpagni, R.; Bragazza, L.; Campetella, G. Plant–environment interactions through a functional traits perspective: A review of Italian studies. *Plant Biosyst. Int. J. Deal. All Asp. Plant Biol.* **2019**, *153*, 853–869.
38. Orrù, P.; Cocco, A. Panizza V Rilevamento geomorfologico subacqueo del settore compreso tra Capo Boi e Punta Is Cappuccinus (Sardegna Sud-Occidentale. *Mem. Descr. Della Carta Geol. d'Ital.* **1994**, *52*, 163–176.
39. Canu, S.; Rosati, L.; Fiori, M.; Motroni, A.; Filigheddu, R.; Farris, E. Bioclimate map of Sardinia Italy. *J. Maps* **2015**, *11*, 711–718.
40. Pinna, M.S.; Bacchetta, G.; Orrù, H.; Cogoni, D.; Sanna, A.; Fenu, G. Results of the Providune project: Restoration of the “Coastal dunes with *Juniperus* spp.” priority habitat in Sardinia. *Plant Sociol.* **2017**, 73–84.
41. Acunto, S.; Bacchetta, G.; Bordigoni, A.; Cadoni, N.; Cinti, M.F.; Duràn Navarro, M.; Frau, F.; Lentini, L.; Liggi, M.G.; Masala, M. The LIFE+ project “RES MARIS - Recovering Endangered habitatS in the Capo Carbonara MARine area, Sardinia”: First results. *Plant Sociol.* **2017**, 85–95.
42. Cogoni, A.; Flore, F.; Scrugli, A. The bryological flora of Isola dei Cavoli SE-Sardinia, Italy. *Flora Mediterr.* **2004**, *14*.
43. Cogoni, A.; Brundu, G.; Zedda, L. Diversity and ecology of terricolous bryophyte and lichen communities in coastal areas of Sardinia Italy. *N. Hedwig.* **2011**, 159–175.
44. Cogoni, A.; Scrugli, A.; Flore, F.; Cortis, P.; Aleffi, M. The bryophyte flora of the Asinara Island (northwest Sardinia, Italy). *Cryptogam. Bryol.* **2009**, *30*, 79–89.
45. Pignatti, S. *Flora d'Italia*; ristampa della 1.; Edagricole: Bologna, Italy, 1982; Volume 3; ISBN 978-88-206-2310-4.
46. Galasso, G.; Conti, F.; Peruzzi, L.; Ardenghi, N.M.G.; Banfi, E.; Celesti-Grappow, L.; Albano, A.; Alessandrini, A.; Bacchetta, G.; Ballelli, S. An updated checklist of the vascular flora alien to Italy. *Plant Biosyst. Int. J. Deal. All Asp. Plant Biol.* **2018**, *152*, 556–592.
47. Hodgetts, N.G. Checklist and country status of European bryophytes - towards a new Red List for Europe.; Irish Wildlife Manuals; National Parks and Wildlife Service. *Dep. Arts Herit and the Gaeltacht, Ireland* **2015**, *84*, 1–130.
48. Pignatti, S.; Menegoni, P. Pietrosanti S Biondificazione attraverso le piante vascolari. Valori di indicazione secondo Ellenberg (Zeigerwerte) per le specie della Flora d'Italia. *Braun-Blanquetia* **2005**, *39*, 1–97.

49. Guarino, R.; Domina, G.; Pignatti, S. Ellenberg's Indicator values for the Flora of Italy—first update: Pteridophyta. *Gymnospermae Monocotyledoneae* **2012**, *22*, 197–209.
50. Domina, G.; Galasso, G.; Bartolucci, F.; Guarino, R. Ellenberg Indicator Values for the vascular flora alien to Italy. *Flora Mediterr.* **2018**, *28*, 53–61.
51. Sérgio, C.; Garcia, C.A.; Vieira, C.; Hespanhol, H.; Sim-Sim, M.; Stow, S.; Figueira, R. Conservation of Portuguese red-listed bryophytes species in Portugal: Promoting a shift in perspective on climate changes. *Plant Biosyst.* **2014**, *148*, 837–850.
52. During, H.J. Life Strategies of Bryophytes: A Preliminary Review. *Lindbergia* **1979**, *5*, 2–18.
53. Dierßen, K. Distribution, Ecological Amplitude and Phytosociological-Characterization of European Bryophytes. *Cramer in der Gebrüder Borntraeger Verlagsbuchhandlung: Berlin, Germany*, 2001; pp 1–289.
54. Hill, M.; Preston, C.; Bosanquet, S.; Roy, D. *BRYOATT-Attributes of British and Irish Mosses, Liverworts and Hornworts*; NERC Centre for Ecology and Hydrology; Countryside Council for Wales: Cambridge 2007; ISBN 978-1-85531-236-4.
55. Cortini Pedrotti, C. *Flora Dei Muschi d'Italia Sphagnopsida–Andreaeopsida–Bryopsida*; Antonio Delfino: Roma, Italy, 2001; pp 1–816.
56. Azorean Biodiversity Group (cE3c) Universidade dos Açores, Dep. de Ciências Agrárias BRYOTRAIT-AZO Available online: <http://islandlab.uac.pt/software/ver.php?id=26> (accessed on 6 April 2020).
57. Pavoine, S. *adiv : Analysis of Diversity*. R package version 2.0; 2020.
58. Pavoine, S.; Vallet, J.; Dufour, A.-B.; Gachet, S.; Daniel, H. On the challenge of treating various types of variables: Application for improving the measurement of functional diversity. *Oikos* **2009**, *118*, 391–402.
59. Braak, C.J.F.; Schaffers, A.P. Co-Correspondence Analysis: A New Ordination Method to Relate Two Community Compositions. *Ecology* **2004**, *85*, 834–846.
60. Schaffers, A.P.; Raemakers, I.P.; Sýkora, K.V.; Braak, C.J.F. Arthropod assemblages are best predicted by plant species composition. *Ecology* **2008**, *89*, 782–794.
61. Oksanen, J.; Blanchet, F.G.; Friendly, M.; Kindt, R.; Legendre, P.; McGlenn, D.; Minchin, P.R.; O'Hara, R.B.; Simpson, G.L.; Solymos, P. *Vegan: Community Ecology Package*; R package version 2.5-6; 2019.
62. Ricotta, C.; Pavoine, S.; Bacaro, G.; Acosta, A.T.R. Functional rarefaction for species abundance data. *Methods Ecol. Evol.* **2012**, *3*, 519–525.
63. Simpson, G.L.; Oksanen, J.A. *Analogue and Weighted Averaging Methods for Palaeoecology*. R package version 0,17-4; 2020.
64. R Core Team. 2019. Available online: <https://www.eea.europa.eu/data-and-maps/indicators/oxygen-consuming-substances-in-rivers/r-development-core-team-2006> (accessed on April 13, 2020).
65. Forey, E.; Chapelet, B.; Vitasse, Y.; Tilquin, M.; Touzard, B.; Michalet, R. The relative importance of disturbance and environmental stress at local and regional scales in French coastal sand dunes. *J. Veg. Sci.* **2008**, *19*, 493–502.
66. Feola, S.; Carranza, M.L.; Schaminee, J.H.J.; Acosta, A.T.R.; Janssen, J. A M. EU habitats of interest: An insight into Atlantic and Mediterranean beach and foredunes. *Biodivers. Conserv.* **2011**, *20*, 1457–1468.
67. Jucker, T.; Carboni, M.; Acosta, A.T.R. Going beyond taxonomic diversity: Deconstructing biodiversity patterns reveals the true cost of iceplant invasion. *Divers. Distrib.* **2013**, *19*, 1566–1577.
68. Campoy, J.G.; Acosta, A.T.R.; Affre, L.; Barreiro, R.; Brundu, G.; Buisson, E.; González, L.; Lema, M.; Novoa, A.; Retuerto, R. Monographs of invasive plants in Europe: Carpobrotus. *Bot. Lett.* **2018**, *165*, 440–475.
69. Lambdon, P.W.; Hulme, P.E. How Strongly Do Interactions with Closely-Related Native Species Influence Plant Invasions? Darwin's Naturalization Hypothesis Assessed on Mediterranean Islands. *J. Biogeogr.* **2006**, *33*, 1116–1125.
70. van Kleunen, M. V.; Essl, F.; Pergl, J.; Brundu, G.; Carboni, M.; Dullinger, S.; Early, R.; González-Moreno, P.; Groom, Q.J.; Hulme, P.E. The changing role of ornamental horticulture in alien plant invasions. *Biological Rev.* **2018**, *93*, 1421–1437.
71. Marziales, F.; Bazzichetto, M.; Giulio, S.; Acosta, A.T.R.; Stanisci, A.; Malavasi, M.; Carranza, M.L. Modelling *Acacia saligna* invasion on the Adriatic coastal landscape: An integrative approach using LTER data. *Nat. Conserv.* **2019**, *34*, 127–144.
72. Stohlgren, T.J.; Barnett, D.T.; Kartesz, J.T. The rich get richer: Patterns of plant invasions in the United States. *Front. Ecol. Environ.* **2003**, *1*, 11–14.

73. Fridley, J.D.; Stachowicz, J.J.; Naeem, S.; Sax, D.F.; Seabloom, E.W.; Smith, M.D.; Stohlgren, T.J.; Tilman, D.; Von Holle, B. The invasion paradox: Reconciling pattern and process in species invasions. *Ecology* **2007**, *88*, 3–17.
74. Peng, S.; Kinlock, N.L.; Gurevitch, J.; Peng, S. Correlation of native and exotic species richness: A global meta-analysis finds no invasion paradox across scales. *Ecology* **2019**, *100*, 02552.



© 2020 by the authors. Licensee MDPI, Basel, Switzerland. This article is an open access article distributed under the terms and conditions of the Creative Commons Attribution (CC BY) license (<http://creativecommons.org/licenses/by/4.0/>).