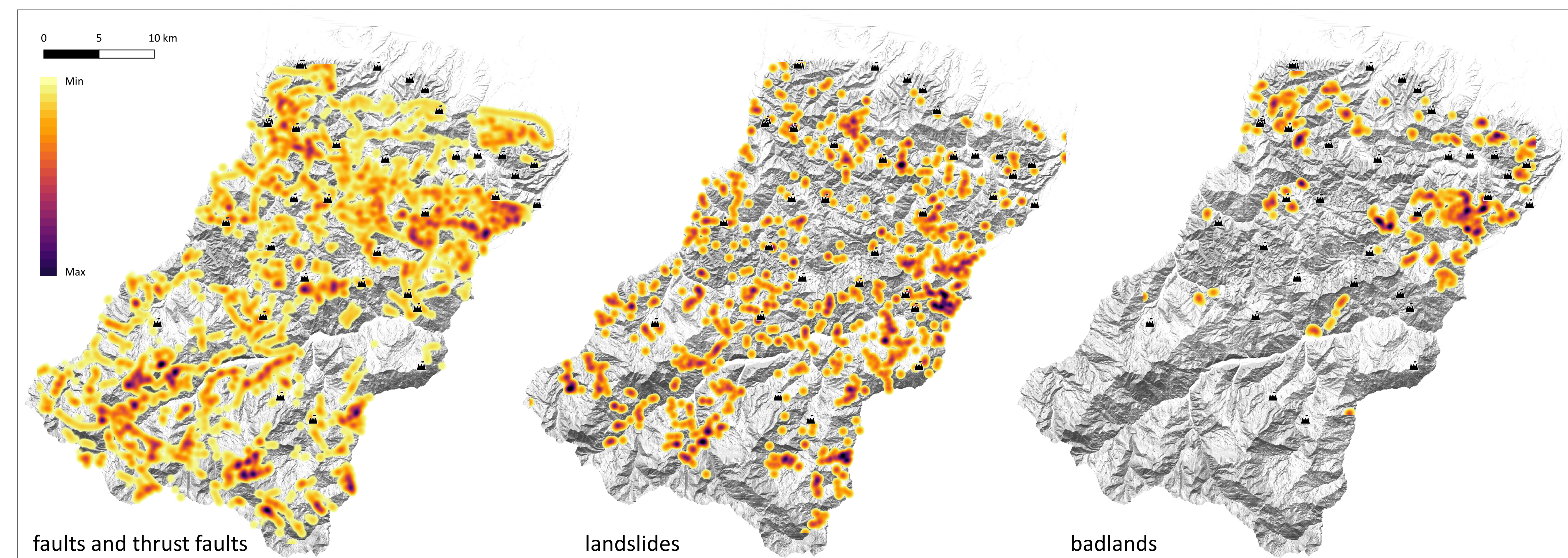
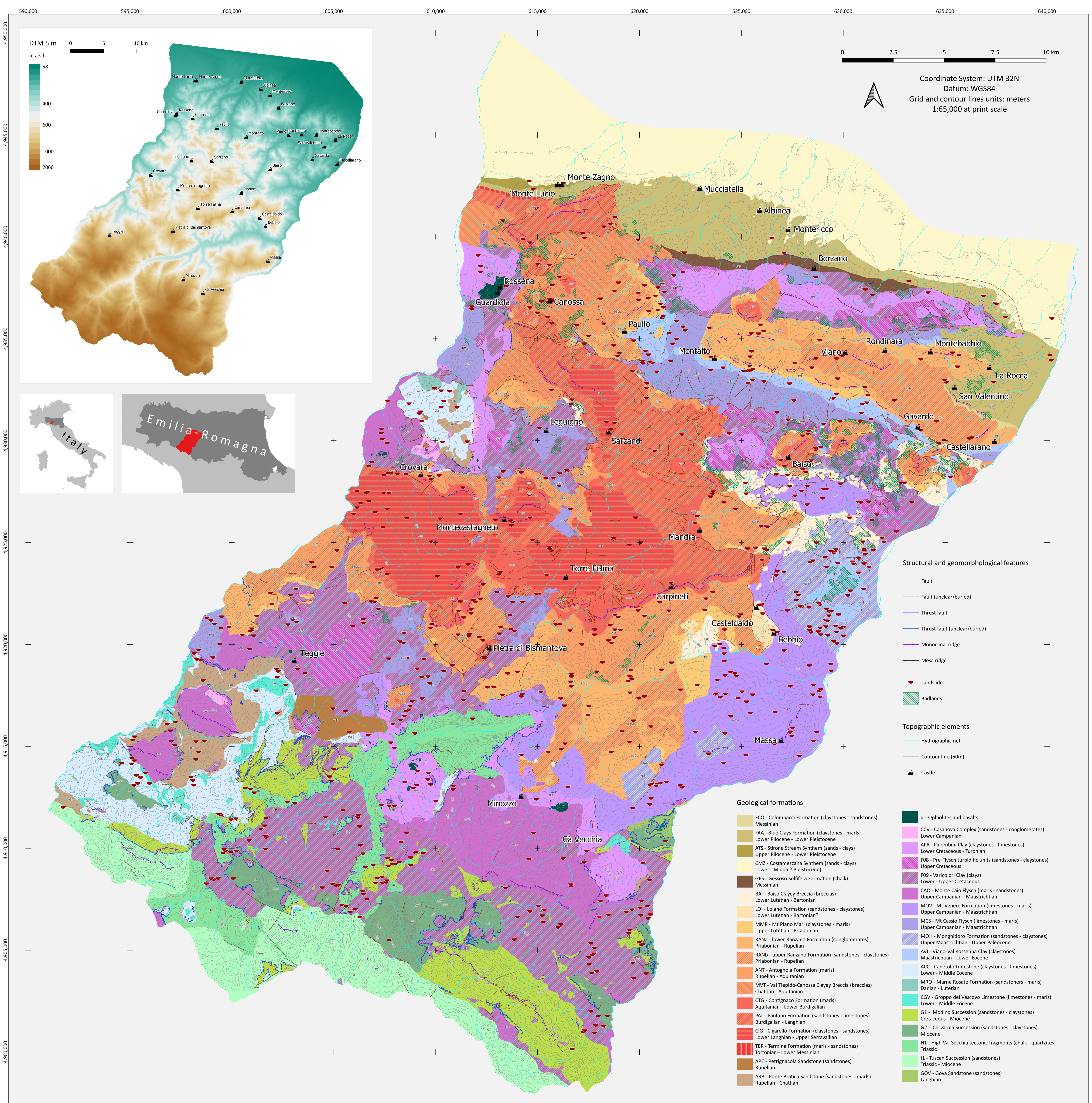


Matilda's castles, northern Apennines: geological and geomorphological constraints

Guido S. Mariani, Filippo Brandolini, Manuela Pelfini, Andrea Zerboni

Dipartimento di Scienze della Terra "Ardito Desio", Università degli Studi di Milano, via L. Mangiagalli, 34, I-20133 Milano, Italy

© Journal of Maps, 2019



Heatmaps representing the density of chosen parameters in the area of study. Analysis of density was based on the kernel method with a radius of 500 meters.

View of the castle of Carpineti: a still-standing Matilda's castle built on sandstone.